

# Ashland's Evacuation Plan

## Are you ready to evacuate?

You must be ready to evacuate at any time during fire season. You may have hours to evacuate or only minutes. It is important that you understand and effectively prepare for Ashland's three levels of evacuation:

<b>Level 1</b>	<ul style="list-style-type: none"><li>• Watch for Nixle alerts for your zone. Be prepared to monitor 1700 AM radio in case phone services or electricity is interrupted.</li><li>• Prepare "Go Kits". Have a plan for pets and family members with special needs.</li><li>• Keep your chosen evacuation vehicle's gas tank full, or if electric, fully charged.</li></ul>	<b>Be Ready</b>
<b>Level 2</b>	<ul style="list-style-type: none"><li>• Be prepared to evacuate at a moment's notice with "Go Kits" in your vehicle.</li><li>• Consider evacuating during Level 2 if your family needs extra time, or if conditions feel unsafe to you. Use situational awareness and your best judgement.</li><li>• This may be the only evacuation notice you receive if conditions worsen rapidly.</li></ul>	<b>Be Set</b>
<b>Level 3</b>	<ul style="list-style-type: none"><li>• Leave immediately. Do not spend further time collecting additional belongings.</li><li>• You will not be able to return until conditions are safe. <i>It is important to plan ahead for this possibility at level 1 alerts or earlier.</i></li><li>• Evacuation routes can change. Continue monitoring Nixle and/or 1700 AM radio.</li></ul>	<b>Go!</b>

### COMPLETE THESE FOUR HIGH-PRIORITY TASKS BEFORE FIRE SEASON:

- Know Your Alerts** – Sign up for Nixle, Ashland's community alert system. Sign up by texting the numbers 97520 to 888777 on your cell phone or go to [ashland.or.us/nixle](http://ashland.or.us/nixle) to sign up online.
- Know Your Zone** – Ashland has TEN evacuation zones (see back of flyer). Nixle Alerts will advise which zones need to evacuate. Become familiar with Ashland's Evacuation Zones with our online interpretive map and explore other useful information by visiting [ashland.or.us/evacuate](http://ashland.or.us/evacuate).
- Get Ready** - Make personal evacuation Go-kits for each family member, to store in your vehicle, and small enough to carry on foot if necessary.
- Stay Together** – Prepare to take only ONE vehicle in an evacuation to minimize evacuation gridlock. Keep the gas tank of this vehicle full.

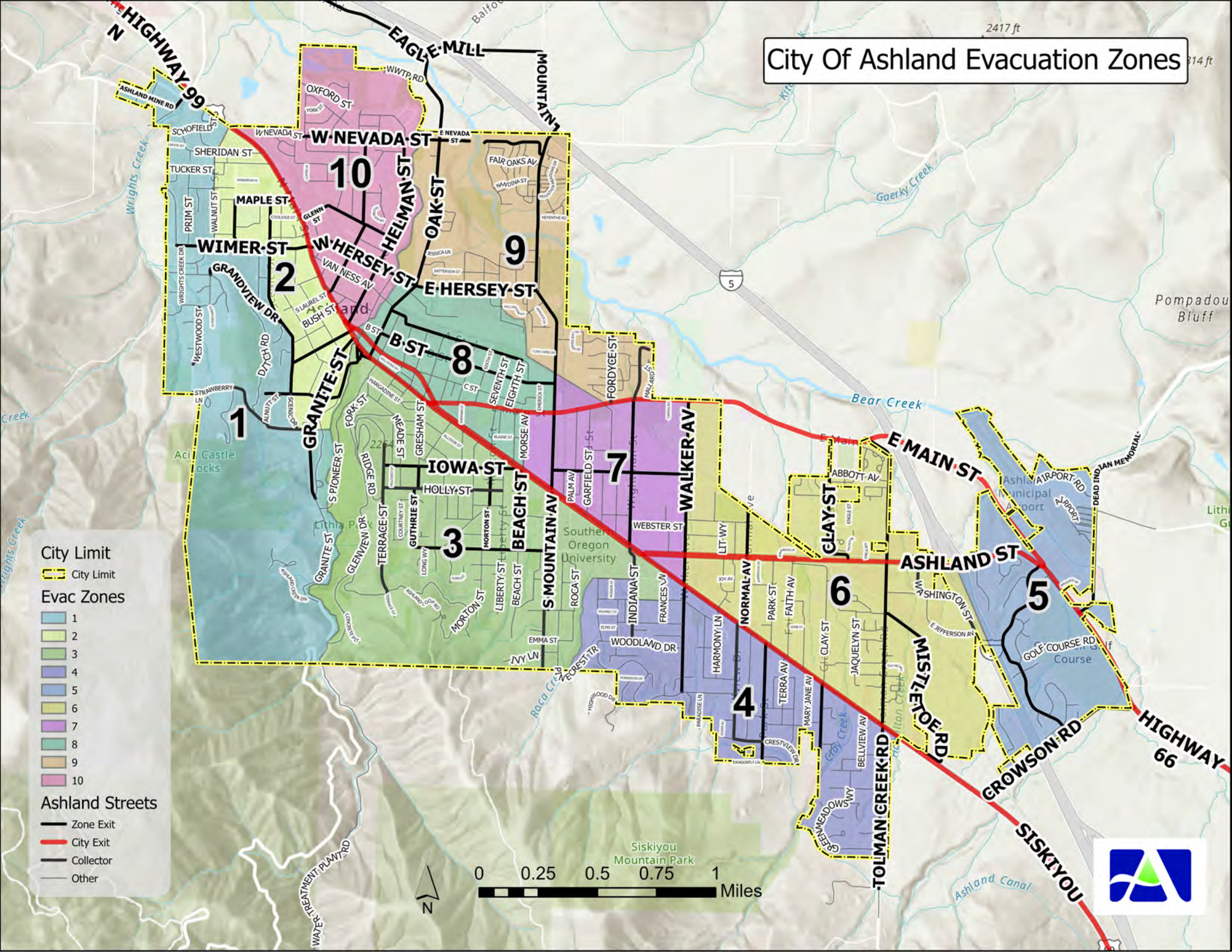


Learn more online:  
[ashland.or.us/evacuate](http://ashland.or.us/evacuate)



SCAN ME

# City Of Ashland Evacuation Zones



### City Limit

City Limit

### Evac Zones

- 1
- 2
- 3
- 4
- 5
- 6
- 7
- 8
- 9
- 10

### Ashland Streets

- Zone Exit
- City Exit
- Collector
- Other

