



HPAC Committee Minutes

December 6, 2023

5:00PM – 6:00PM

Community Development/Engineering Services Building – 51 Winburn Way

5:00PM CALL TO ORDER

Hovenkamp called the meeting to order at 5:01

Commissioners Present:	Council Liaison:
Shostrom	Jeff Dahle
Hovenkamp	Staff Present:
Emery	Derek Severson; Planning Manager
Repp	Regan Trapp; Admin Support
Scharen	
Whitford	
Bonetti	
Commissioners Absent:	Skibby

READING OF LAND ACKNOWLEDGEMENT

Land Acknowledgement was read by Hovenkamp.

"We acknowledge and honor the aboriginal people on whose ancestral homelands we live, – the Ikirakutsum Band of the Shasta Nation, including the original past indigenous inhabitants, as well as the diverse Native communities who make their home here today. We also recognize and acknowledge the Shasta village of K'wakhakha – "Where the Crow lights"—that is now the Ashland City Plaza."

APPROVAL OF AGENDA (5 min)

- Commissioner suggested amendments to Agenda.
Amendments to the agenda include the following:
 - Heritage Tourism Workshop - 15 min presentation during public forum.
 - Input on upcoming curb ramp project in the Historic Districts (ODOT)
 - 774 B Street project.

APPROVAL OF MINUTES (5 min)

- Historic Commission meeting of November 8, 2023.

Shostrom/Emery m/s to accept the minutes of November 8, 2023. ALL AYES. Motion passed.



HPAC Committee Minutes

PUBLIC FORUM (15 min)

Maureen Battistella spoke regarding the Heritage Tourism Workshop. **(See attachment A)**

- Travel Southern Oregon has funded (by a grant) Jackson County Heritage Advocacy to present the upcoming workshops and fund a new travel brochure to include historic Ashland. Maureen would like the brochure to include a link to the Ashland.or.us/historic website which would include all State of Oregon history and heritage websites.

(See attachment B)

Repp/Whitford m/s to take advantage of the Jackson County Heritage Association's plan to consolidate information. ALL AYES. Motion Passed.

ODOT Curb Ramp Project

Charlotte Helmer with ODOT presented the options for the project with upgrades along E. Main and Lithia. They are required to follow accessibility standards that have color, detectable edges, and surfaces for all their designs. She welcomes the Committee's feedback and comments and will take them back to the team for further research. There are incredibly specific guidelines and standards that they must follow but they do have flexibility in some cases. They are mandated to move quickly on this project and need to have suggestions submitted soon.

(See attachment C)

Committee Suggestions

- Raised curb with better contained bark and landscaping to be maintained by the city.

Charlotte encourages the Committee to write ODOT voicing their preferences (items specifically addressing the impact to the historic districts) to this project so that in upcoming phases, they can take suggestions (outside the preferred choices or comments on Phase 1) into consideration. Letters from the Committee need to be submitted to ODOT and PW Works Director, Scott Fleury, by mid-December 2023.

Severson to verify the timeline for the ODOT project.

Repp, Scharen, Shostrom, and Bonetti to form a subcommittee to look at the installations and come up with recommendations. Severson to get the subcommittee locations of the most recent installations to them as soon as possible.



HPAC Committee Minutes

LIAISON REPORTS (5 min)

Councilor Dahle gave a liaison report. Items discussed were:

- Councilor Dahle expressed thanks to the Committee members for their hard work.
- 5G wireless ordinance and how it affects visual in the public ROW. He will be looking for input from the committee. (This item will be reviewed by the Committee in January or February)

Severson gave the staff report. Items discussed were:

- Committee appreciation event and workplan review is on December 18th at council chambers. Trapp to send reminder to Committee to put on their calendar.

(5:40) PLANNING ACTION REVIEW (20 min)

PLANNING ACTION: PA-TI-2023-00220

SUBJECT PROPERTY: 38 E Main St

APPLICANT/OWNER: Cynthia Guthrie for Bingham Sacks LLC

DESCRIPTION: A request for a Site Review for an exterior change to a Historic Contributing building. Changes include adding a roll up window with a new counter on the left side of the entrance and removing existing planter boxes at the corner window to the right of the entrance. The entrance itself is to remain unchanged. **COMPREHENSIVE PLAN DESIGNATION:**

Commercial; **ZONING:** C-1-D; **MAP:** 39 1E 09 BB; **TAX LOT:** 99001

There was no conflict of interest or ex-parte contact indicated by the Committee.

There were no applicants present.

Severson gave the staff report for PA-TI-2023-00220.

Bonetti/Scharen m/s to approve PA-TI-2023-00220 as submitted Voice vote. ALL AYES, Motion passed.

(4:55) DISCUSSION ITEMS (10 min)

- A. Review Board
- B. Heritage Tourism Workshop
- C. 774 B Street project – Details of the project were discussed, and the Historic Review Board will be reviewing the plans on 12/7/2023.

ADJOURNMENT

*Next meeting is scheduled January 3, 2024, at 4:00pm at, 51 Winburn Way
There being no other items to discuss, the meeting adjourned at 7:06pm
Respectfully submitted by Regan Trapp*

HERITAGE* TOURISM* and ECONOMIC DEVELOPMENT*

WEDNESDAY JANUARY 17, 2024 AND FEBRUARY 21, 2024

A new brochure that showcases Jackson County historic sites will be printed in January 2024 thanks to a partnership between Travel Southern Oregon and the Jackson County Heritage Association. The partnership also funds one year's distribution of the new brochure to 72 hotels and chambers of commerce, the Medford Airport, and the South Ashland Visitors' Center.

The JCHA and Travel Southern Oregon are also teaming up to produce two professional development workshops to enhance the skills and knowledge of the travel and hospitality industries, city staff and elected officials, and heritage advocates. The goal of these workshops is to develop and enhance strategic partnerships at the intersection of heritage, tourism, and economic development.

Let's work together to craft strategic partnerships and develop meaningful outcomes that raise the visibility of Southern Oregon's heritage sites and organizations, increase tourism, and improve our communities.

professional development workshops are no cost; lunch provided
registration required: <https://forms.gle/N3UhNWkdAk2nr7n58>

Jackson
County
Heritage
Association
and
Travel
Southern
Oregon



For more information contact
Maureen Flanagan Battistella
Southern Oregon University SOAN
541-552-0743 or battistem@sou.edu

Heritage Tourism 101: The Intersection of Heritage, Tourism and Economic Development

Wednesday, January 17, 2024, 10a-4p | Talent Community Center

Keynote Speaker: Shawn Irvine, Economic Development Director, City of Independence, Oregon

Appreciate the economic and human values of heritage tourism; Understand the basics of the tourism industry; Learn about successful partnerships in Southern Oregon; Develop strategic partnerships and collaboration. Successful new partnership ideas that emerge from the workshop will be featured in Travel Southern Oregon's newsletter over the next six months.

Heritage Tourism 201: Telling Authentic Stories with Historical Re-enactments

Wednesday, February 21, 2024, 9a-3p | Jacksonville City Hall Assembly Room

Keynote Speakers: Danielle Mancuso (The Lantern) + Dr. Anna Sloan (Anthropologist)

Delivery + Content = Impact. Appreciate the power of story, grounded in fact; Understand the importance of both content and delivery; Learn about how historical re-enactments are conducted in historic homes, in cemeteries, within a town, on a trail or the river; Get energized about how you can put these ideas into action; Practice historical re-enactment techniques with renown drama coach Betsy Bishop.

Maureen Flanagan Battistella, MLS
Southern Oregon University Sociology/Anthropology
Ashland Historic Preservation Advisory Committee 2023-12-06

ashland.or.us/historic → <https://www.ashland.or.us/Page.asp?NavID=11782>

OBJECTIVE: Use this page to aggregate information about Ashland's history and heritage

Historic Preservation Information

Historic Preservation Organizations and Agencies

National Trust for Historic Preservation X → savingplaces.org

National Park Service, Historic Resources Section

Southern Oregon Historical Society

Oregon Historical Society

State Historic Preservation Office X → oregonheritage.org

Secretary of the Interior Rehabilitation Standards

Oregon Cultural Trust

National Register of Historic Places Ashland- X → nps.gov/subjects/nationalregister

Downtown District pdf

Siskiyou Hargadine pdf

Railroad District pdf

Skidmore Academy Historic District pdf

This Old Town → thisoldtown.com

The Applegate Trail

Historic Roads → historicroads.org

Oregon Historical County Records Guide X → sos.oregon.gov/archives/records/county/Pages/default.aspx

Save America's Treasures → X nps.maps.arcgis.com/apps/webappviewer/index.html?id=67d94c74ff8247eebde4bf5fba644b7

Historic Preservation Advisory Committee <https://www.ashland.or.us/CCBIndex.asp?CCBID=195>

Historic buildings fact sheets

Historic District Map

Historic Preservation Plan

Lithia Springs/Winburn Camp Inventory 1987

Historic Cemeteries Preservation Plan 2000

Parks Story Map Web Apps <https://www.ashland.or.us/Page.asp?NavID=17020>

History of Lithia Park

Lithia Park Trail Guide

Map Center <https://www.ashland.or.us/Page.asp?NavID=17324>

Interactive Maps and Apps

Parks Memorial Finder <https://gis.ashland.or.us/parks/memorial/>

Ashland Public Art Collection <https://gis.ashland.or.us/portal/apps/storymaps/stories/9aa5651e7249437eaf5c6bcd057e3c5d>

Public Works Cemetery Viewer <https://www.ashland.or.us/page.asp?navid=13656>

Hargadine

Ashland

Mountain View

ashland.or.us/historic → <https://www.ashland.or.us/Page.asp?NavID=11782>

OBJECTIVE: Use this page to aggregate information about Ashland's history and heritage

Suggested Aggregation and Reorganization

Historic Preservation Information, Organizations and Agencies

Ashland City

Jackson County

Oregon

National

SUGGESTED ADDITIONS

Jackson County Property Online	https://pdo.jacksoncountyor.gov/pdo/
Jackson County Heritage Association	https://jchaor.wixsite.com/jcha
Southern Oregon Digital Archives (SOU)	https://soda.sou.edu
Stories of Southern Oregon (SOU)	https://www.youtube.com/c/storiesofsouthernoregon
Oregon Shakespeare Festival Archives	https://www.osfashland.org/company/archives.aspx
Rogue Valley Genealogical Society Library	https://rvgslibrary.org
Jefferson Public Radio Program Guide	https://archive.org/details/Jefferson-Public-Radio-Jefferson-Journal/
Oregon Digital Newspaper Program	https://oregonnews.uoregon.edu
Oregon Historic Sites Database	heritagedata.prd.state.or.us/historic/
Oregon Encyclopedia (OHS)	https://www.oregonencyclopedia.org/
Oregon Explorer (OSU)	https://oregonexplorer.info/tools/oe-atlas/cities/ashland
Oregon Digital (UO/OSU)	https://oregondigital.org/catalog?utf8=%E2%9C%93&search_field=all_fields&q%5B%5D=ashland#content
Archives West	https://archiveswest.orbiscascade.org/search.php?r=&q=ashland
National Archives	https://catalog.archives.gov/search?q=%22ashland%20oregon%22
Internet Archives	https://archive.org/search?query=%28ashland%29+AND+description%3A%28oregon%29

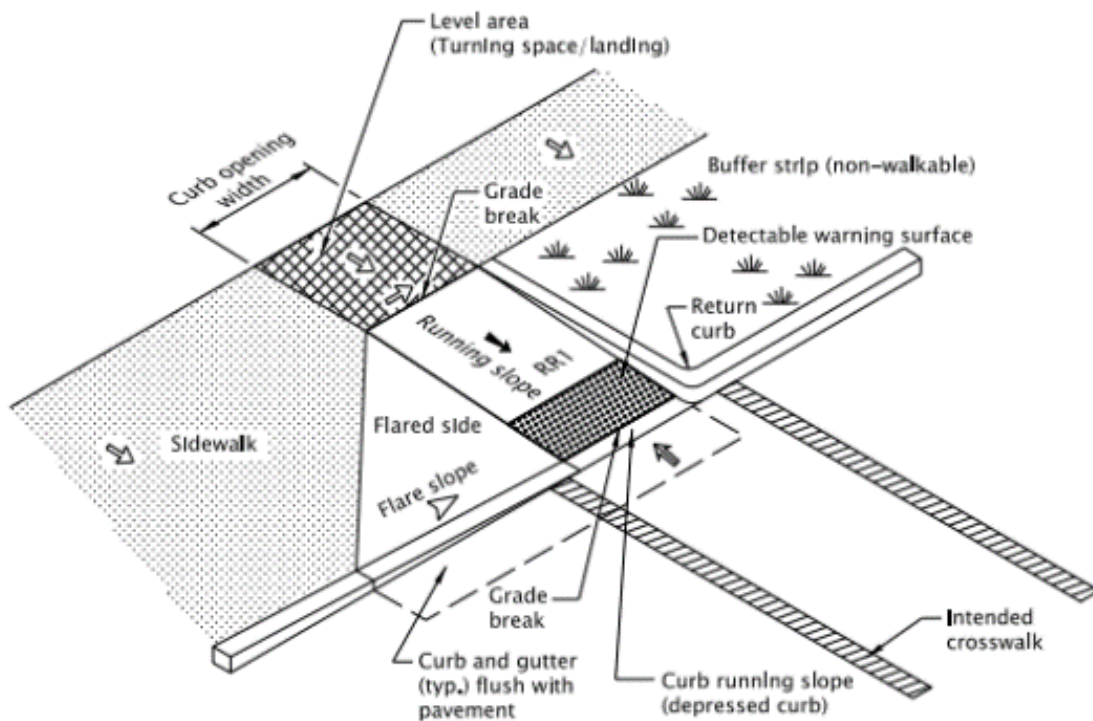
DRAFT: Illustration of landscaping treatments used in the ODOT ADA Curb Ramp Program

C. Helmer, v.11.17.2023

Summary

This document is intended to provide basic information about landscaping treatments that are commonly used to create non-walkable surfaces around curb ramps. ODOT uses a variety of treatments depending on the site-specific configuration of ramps, adjacent landscape, historic context, snow conditions, and other factors. Accessibility standards require that non-walkable surfaces have textures and color contrast that pedestrians can detect as they navigate pedestrian access routes. Flares (also called wings) also meet accessibility standards because their slopes indicate transitions around ramps.

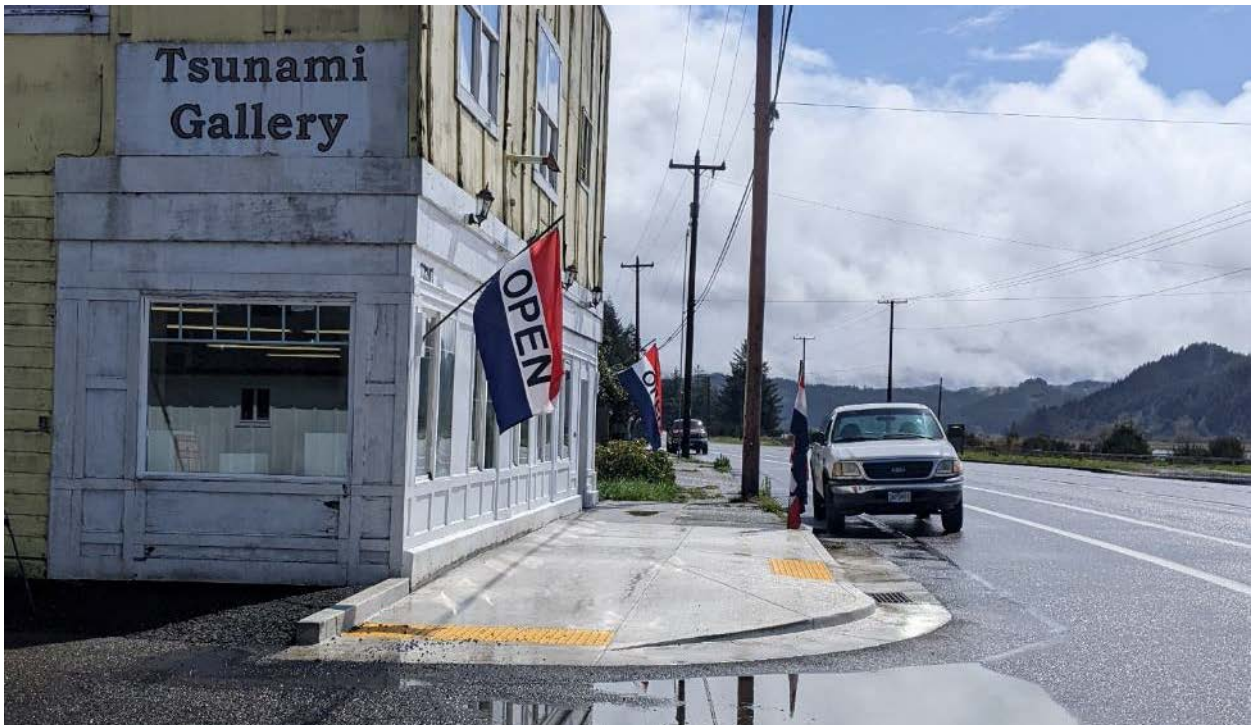
All drawings in this document are provided by ODOT. All photos depict recent curb ramp projects in Oregon and are provided by C. Helmer or Google Street View.



TYPICAL CURB RAMP COMPONENTS

Ramp Types: flare or curb return

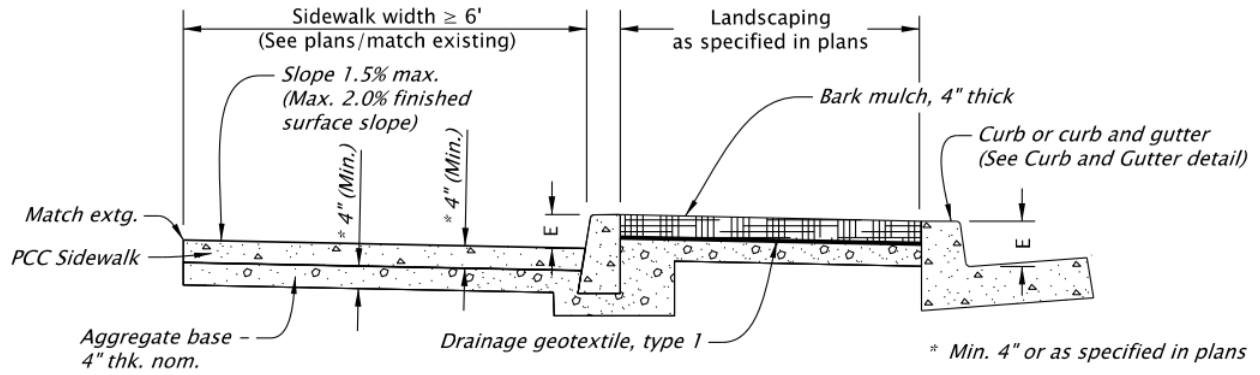
These days, it is generally understood that flares (also called wings) perform better than curbed, landscaped islands. Curbed islands still occur when designers cannot achieve flares that meet accessibility standards (such as slopes) due to site constraints (such as utilities). Also, note that each curb ramp is designed to align with a corresponding ramp across the street. They do not always align with the sidewalk. This is done to shorten the crossing distance (area where pedestrians are exposed to traffic). Bulb-outs serve the same purpose. These designs can create large, asymmetrical flares or curbed islands.



Bark Mulch and Sod Lawn

Concerns include maintenance burden to reinstall or re-seed; irrigate; and mow or weed to manage invasive weeds, fire hazards, and lines of sight; also, tendency for material to spread into roadways and pedestrian routes. These softscape treatments are generally appropriate in historic districts.





BARK MULCH SECTION (NOT TO SCALE)

LAWN SEEDING / SOD LAWN SECTION (NOT TO SCALE)

Rock Mulch

Rocks have ranged in size and color depending on each project. Concerns include maintenance burden, tendency for people to throw rocks, tendency for material to spread into roadways and pedestrian routes, and difficulty of walking through soft material. This treatment was previously used as a compromise in some historic districts, but it may no longer be feasible due to concerns for ODOT and local agencies.

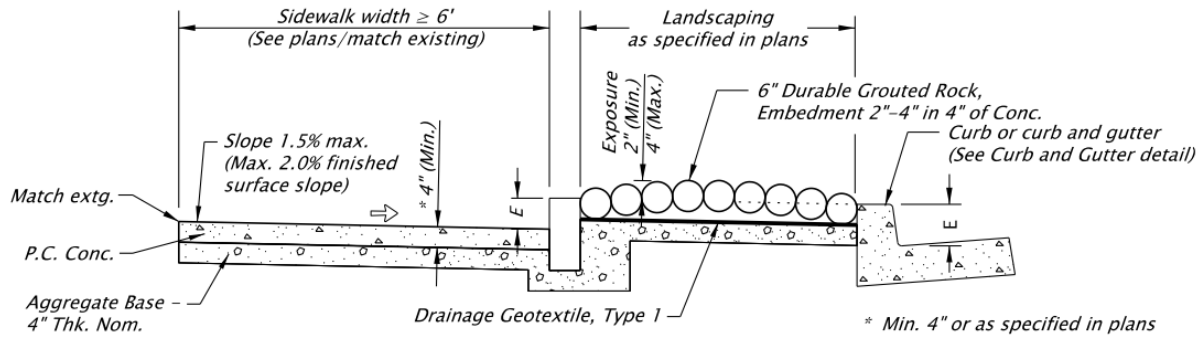


ROCK MULCH SECTIONS (NOT TO SCALE)

Grouted Rock

Also known as durable grouted rock or DGR. Rocks have ranged in size and height depending on each project. Concerns include inconsistent quality of installation, tendency for cracking and spalling, difficulty of repair, and difficulty of walking over an irregular surface. Benefits include limited maintenance compared to softscape. This treatment was previously used as a compromise in some historic districts, but it may no longer be feasible due to maintenance concerns for ODOT and local agencies.



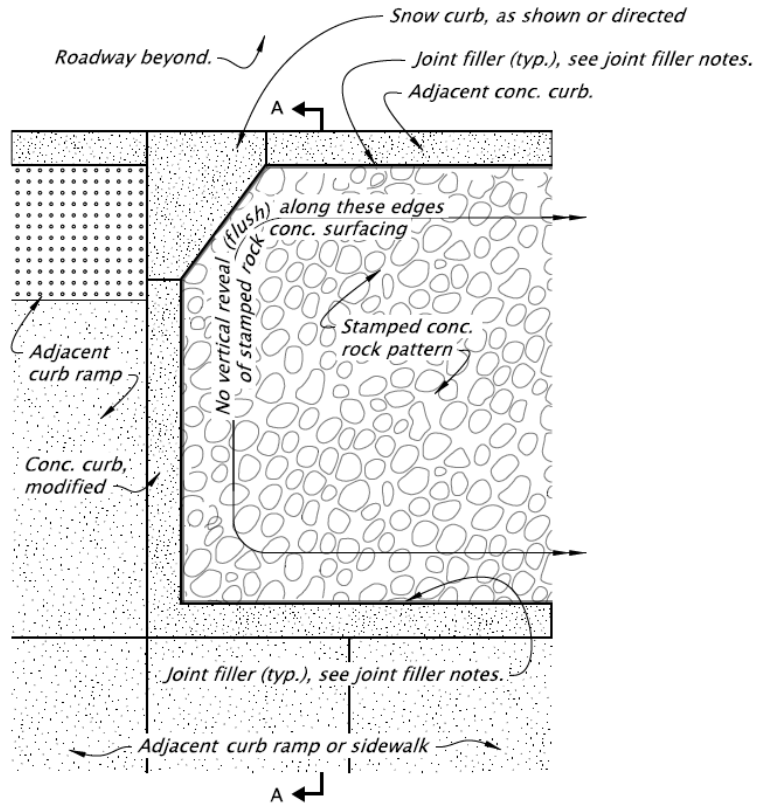


GRouted ROCK SECTION (NOT TO SCALE)

Stamped Concrete

Also known as stamped cobble or stamped rock concrete. Colors used thus far are terracotta and cocoa; sandstone is in development. Concerns include inconsistent quality of installation, tendency for cracking and spalling, and difficulty of repair. Benefits include limited maintenance compared to softscape and a more regular surface compared to grouted rock. The cobble pattern provides a sufficient detectable texture. Other patterns (such as brick) are typically too smooth to meet accessibility standards. The color-tinted concrete provides sufficient color contrast, even as it fades with exposure to UV.





STAMPED CONCRETE PLAN VIEW (NOT TO SCALE)

STAMPED CONCRETE SECTION A-A (NOT TO SCALE)