

## October 22<sup>nd</sup> Graywater Workshop

On October 22<sup>nd</sup> the City of Ashland in partner with Medford Water, held a graywater workshop from 9:30 a.m. to 12:30 p.m. for all who were interested. Each attendee was provided with a Graywater Guide book written by our esteemed instructor Laura Allen with [Graywater Action](#).



Attendees of the workshop learned about the basics of graywater, including what fixtures you can collect graywater from, how that water can be used, and the types of systems you could install. We also learned to do site assessments to determine which type of graywater system would be the best for varying locations as well as general costs and pros and cons of each type of system.



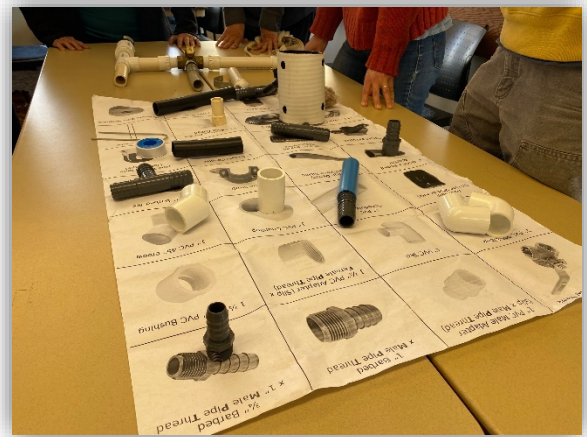
We discussed Laundry to Landscape Graywater Systems, and reviewed the parts needed to design one. Each participant had an opportunity to practice putting the parts together in the classroom. We spent a good amount of time learning to estimate graywater flows, estimating plant water requirements and how best to design the system based on these characteristics.

We also discussed and reviewed branched drain and pumped systems, which uses graywater from multiple fixtures such as showers, bathroom faucets and washing machines to water the landscape. We went over proper sizing and positioning of pipes transporting graywater to the

landscape as well as the type and size of diverter valves. We identified sites that would be appropriate for such a system and sites that would work better with a simple laundry to landscape system instead.

The instructor taught us how to identify different soil types using the soil ribbon test and how to conduct a soil infiltration test. We then learned to calculate the size of our mulch basins based on soil type and the amount of graywater expected to be produced and applied to the landscape.

The last item we went over was how to fill out a DEQ Graywater permit using all the information and criteria we went over in the class. We discussed state permits as well as permits and design information that is required from City and County planning and building departments in our area.



If you would like more information on graywater systems please visit the City of Ashland's website at [www.ashland.or.us/graywater](http://www.ashland.or.us/graywater) or you can call 541-774-2436. Please stay tuned for the next workshop!