



Climate Friendly & Equitable Communities

What are Climate Friendly & Equitable Communities?

Climate Friendly and Equitable Communities (CFEC) Rules were adopted in July 2022. As part of these new rules, local governments are required to study, identify, and designate climate friendly areas to help provide local residents with more housing and transportation choices while also meeting Oregon’s Climate Pollution Reduction Targets for 2050. These rules require some cities to update their transportation and land use plans and development codes to accommodate walkable, mixed-use development.



What do Climate Friendly Areas look like?

A Climate Friendly Area (CFA) is intended to be a place where residents, workers, and visitors can meet most of their daily needs without having to drive. These places may be urban mixed-use areas such as downtowns and main streets.

CFAs include a greater variety of housing, jobs, business, and services.



CFAs are served, or planned for service, by high quality pedestrian, bicycle and transit infrastructure.



CFAs will provide greater transportation options and a complete network of EV charging stations for Oregon's electric vehicle future.



What is the project timeline?

This legislation consists of two major phases. The first phase of the process is to study and determine potential locations of Climate Friendly Areas by the end of 2023. The second phase is to adopt development standards for these areas by the end of 2024. Throughout the process there will be a variety of ways to participate and offer feedback through public meetings and forums.

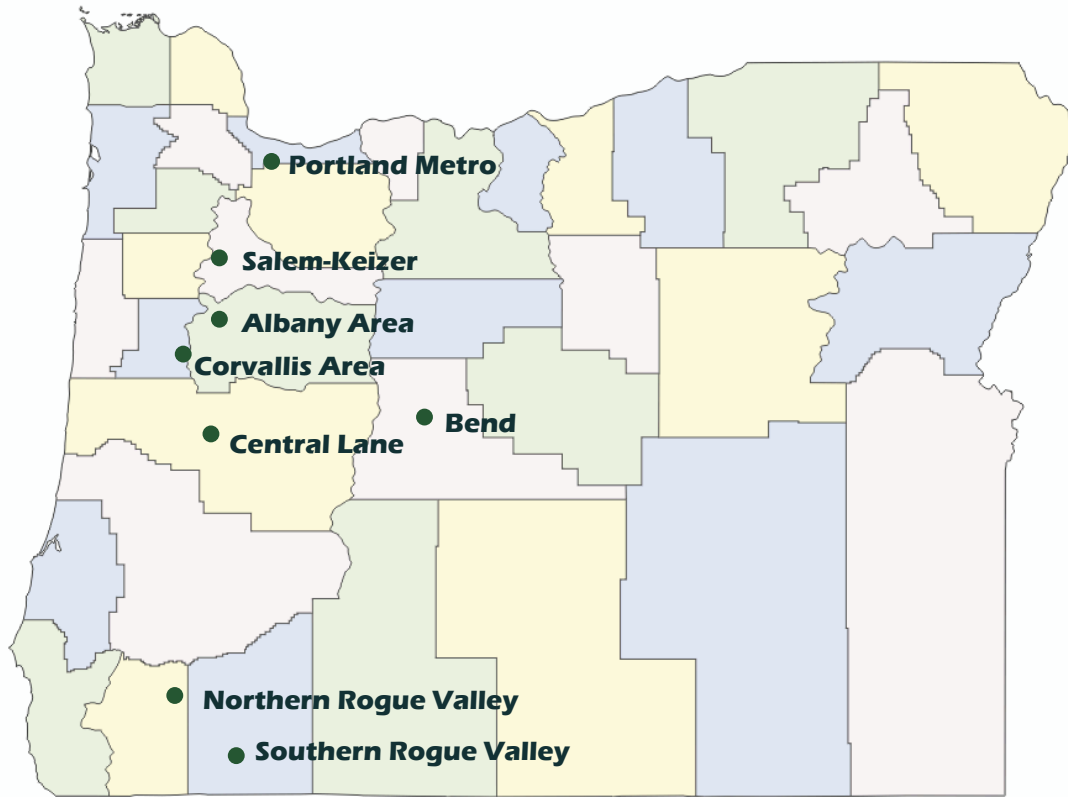
Phase 1
2023
Study and determine potential locations for CFA designations



Phase 2
2024
Adoption of Development Standards

Oregon's Eight Metropolitan Areas for Climate Friendly and Equitable Communities

CFEC will strengthen transportation and housing planning in eight key regions with populations over 50,000 people



How do I get involved?

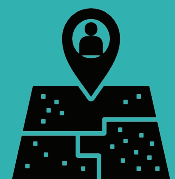
The cities of Ashland, Medford, and Talent in partnership with the Rogue Valley Council of Governments (RVCOG), are hosting a public meeting to present potential Climate Friendly Area locations in all three communities.

Southern Rogue Valley Public Meeting

Thursday, April 13 from 6:00 p.m. to 7:30 p.m.

Talent Community Center

104 E Main Street



Questions?

More information and resources can be found online:

Ashland: www.ashland.or.us/climatefriendly

Medford: www.medfordoregon.gov

Talent: www.cityoftalent.org



City of Ashland

Derek Severson

(541) 552-2040

derek.severson@ashland.or.us

City of Medford

Carla Paladino

(541) 774-2395

carla.paladino@cityofmedford.org

City of Talent

Kristen Maze

(541) 535-1566

kmaze@cityoftalent.org