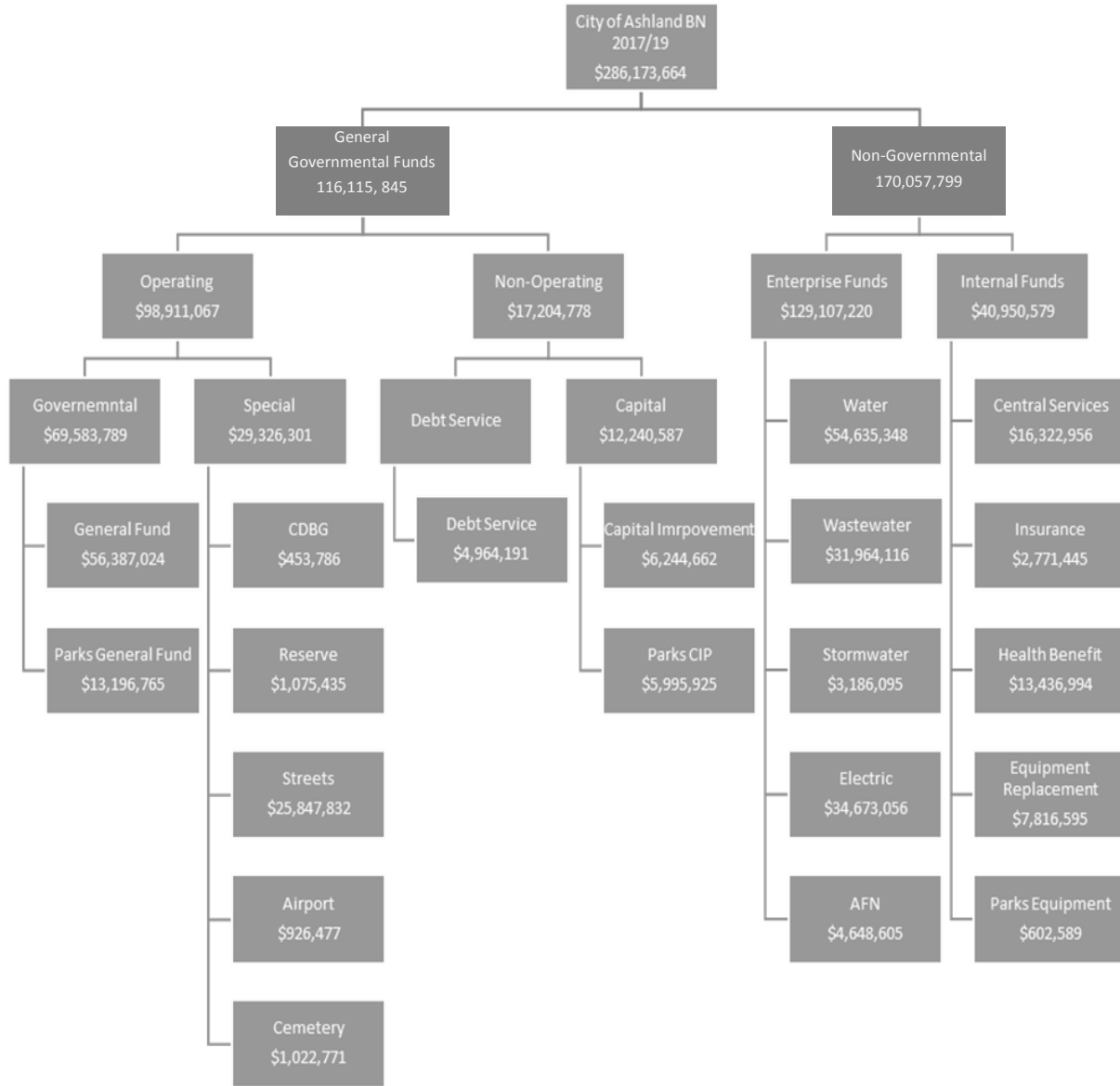


The city maintains 20 budget funds. The relationship between the funds are listed below:



Fund	Major Revenue	Major Expenditures
General Fund	<ul style="list-style-type: none"> • Property Tax • Transient Occupancy Tax • Franchise Fees • Charges for Services 	<ul style="list-style-type: none"> • Police • Fire • Community Development • Cultural, Economic and Social • Service Grants
CDBG	<ul style="list-style-type: none"> • Grant Funds 	<ul style="list-style-type: none"> • Community Development Block Grant Program
Reserve Fund	<ul style="list-style-type: none"> • Other Funds Transfer 	<ul style="list-style-type: none"> • Money can be used for specific future needs
Street Fund	<ul style="list-style-type: none"> • Charges for Services • Franchise Fees • Food and Beverage Tax • Grants 	<ul style="list-style-type: none"> • Streets and Transportation needs
Airport Fund	<ul style="list-style-type: none"> • Grants • Rent 	<ul style="list-style-type: none"> • Airport
Capital Improvement Fund	<ul style="list-style-type: none"> • Food and Beverage Tax (Parks) • System Development Charges • Charges for Services • Grants 	<ul style="list-style-type: none"> • Capital Projects
Debt Service Fund	<ul style="list-style-type: none"> • Property Tax for GO Bonds • Charges for Services • Other Funds/Department Transfer 	<ul style="list-style-type: none"> • Debt Payments
Water Fund	<ul style="list-style-type: none"> • Charges for Services • System Development Charges 	<ul style="list-style-type: none"> • Water Treatment and Delivery
Wastewater	<ul style="list-style-type: none"> • Food and Beverage Tax • Charges for Services • System Development Charges 	<ul style="list-style-type: none"> • Sewer Treatment
Stormwater	<ul style="list-style-type: none"> • Utility Fee 	<ul style="list-style-type: none"> • Stormwater System

Fund	Major Revenue	Major Expenditures
Electric Fund	<ul style="list-style-type: none"> • Charges for Services 	<ul style="list-style-type: none"> • Electric Service for the Community
Central Services	<ul style="list-style-type: none"> • Charges to other Departments 	<ul style="list-style-type: none"> • City Administrator Office • Finance • Human Resources • Information Technology • City Recorder
Insurance Fund	<ul style="list-style-type: none"> • Other • Funds/Department Transfers 	<ul style="list-style-type: none"> • Insurance Program
Health Benefit Fund	<ul style="list-style-type: none"> • Premiums 	<ul style="list-style-type: none"> • Self-Funded Health Benefit Fund
Equipment Fund	<ul style="list-style-type: none"> • Other • Funds/Department • Transfer 	<ul style="list-style-type: none"> • Savings for the Replacement of Large Equipment
Cemetery Trust	<ul style="list-style-type: none"> • Charges for Service 	<ul style="list-style-type: none"> • Cemetery
Parks General Fund	<ul style="list-style-type: none"> • Charges for Services (General Fund Property Tax) • Charges for Services 	<ul style="list-style-type: none"> • Parks