



# BN 2023–2025 Fire Department

May 11, 2023

# Fire Department

Ashland Fire & Rescue Divisions: AF&R is comprised of three divisions: Administration, Operations, Wildfire & Community Risk Reduction. Ashland Fire & Rescue provides fire suppression, fire prevention, emergency medical, rescue, and watershed management services to the 21,621 citizens and 6.9 square miles of Ashland. Ashland Fire & Rescue also provides advanced life support medical transportation for Jackson County Ambulance Service Area #3 making up 650 square miles from the California border to Phoenix. Ashland Fire & Rescue also provides the following services:

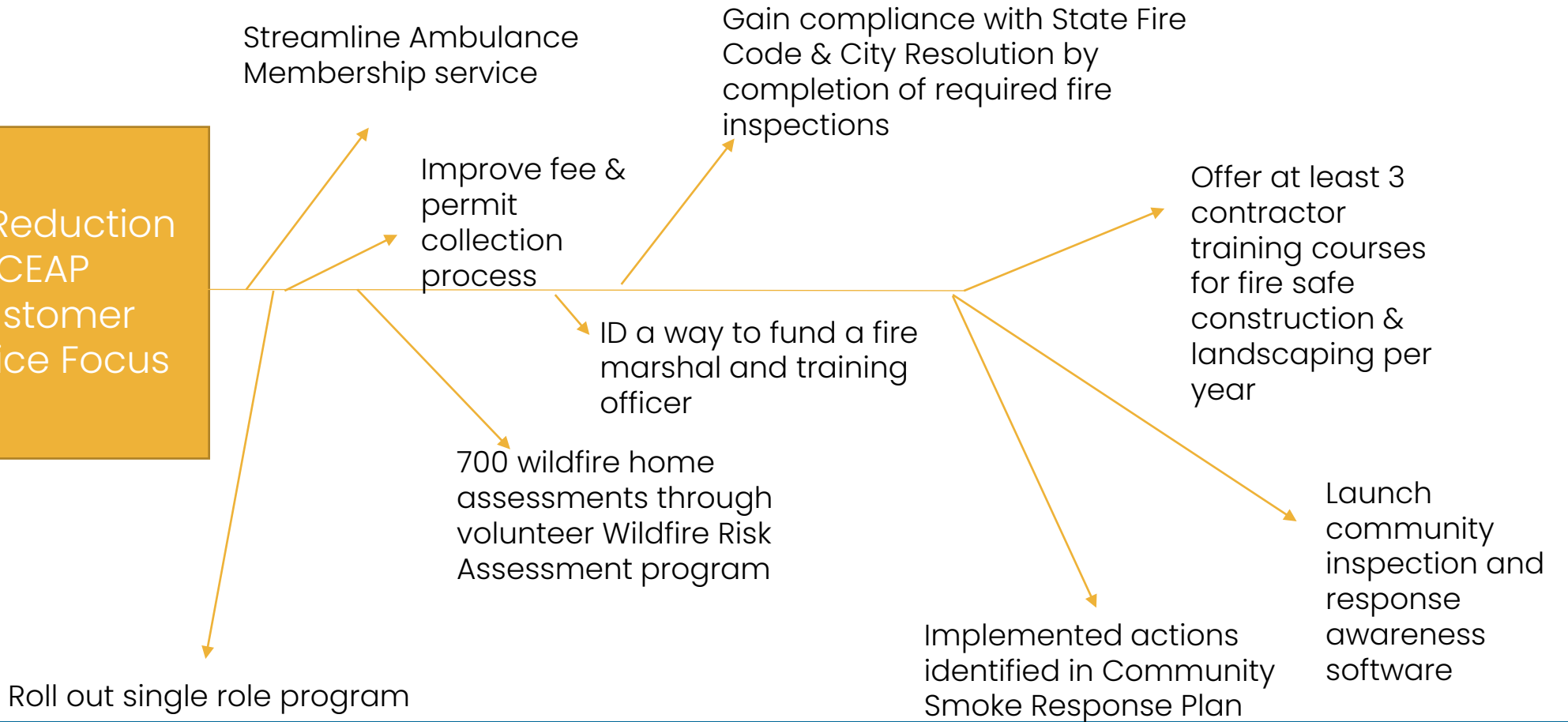
Firewise USA	Fire Adapted Ashland	Community Risk Reduction
Public Safety Education	Emergency Management	Emergency Preparedness
Community Emergency Response Team (CERT)	Ashland Forest Resiliency Stewardship Project	Fire Alarm and Sprinkler Plan Reviews
Fire Prevention Inspections	Community Alerting (Nixle)	Fire Investigations
Municipal Forestlands Management	Weed Abatement	Citizen Complaints



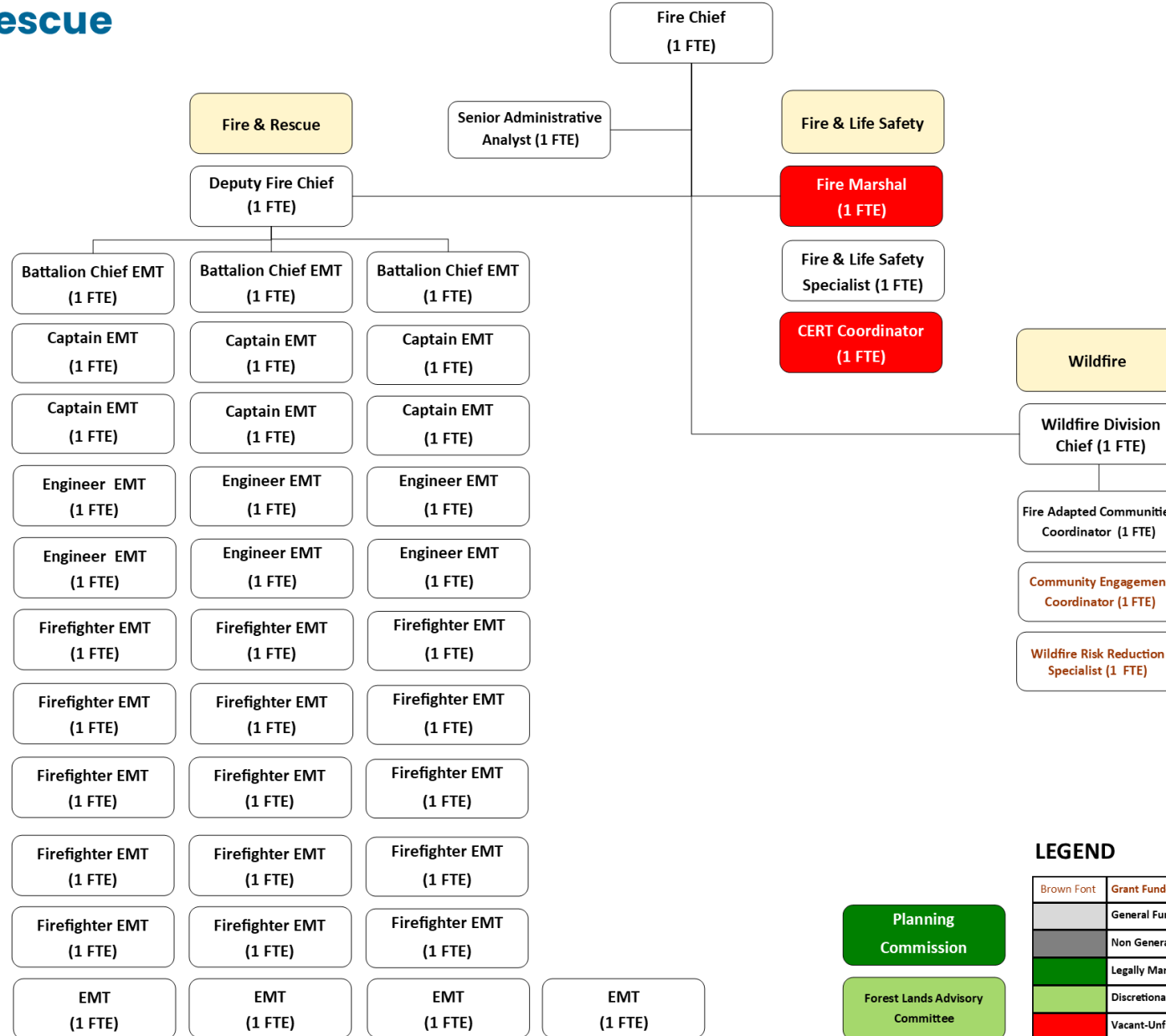
# BN 2023/25 Priorities

Fire

- Risk Reduction
  - CEAP
- Customer Service Focus



# Ashland Fire & Rescue



## LEGEND

Brown Font	Grant Funded Positions
	General Fund & Enterprise Fund Positions
	Non General Fund Positions
	Legally Mandated Commissions/Committees
	Discretionary Commissions/Advisory Boards
	Vacant-Unfunded

Planning Commission

Forest Lands Advisory Committee



# Significant Changes

- An increase in staffing, as well as ladder aerial access, will result in direct reduction of ISO rating of a 3 to a 2, and quite possibly to an ISO 1, which would be the first in the state.
- An increase in staffing will reduce the times there are no staff personnel available to respond to calls.
- An increase in staff will allow for an increase in revenue from interfacility transfers, which are quite often not able to be performed due to lack of staffing.



# BN 2023/25 Proposed

## Fire Department

	BN 2017/19 Actual	BN 2019/21 Actual	BN 2021/23 Adopted	BN 2023/25 Proposed
<b>Personnel Services</b>	\$12,648,409	\$12,770,417	\$12,335,626	\$14,615,194
<b>Material and Services</b>	\$6,564,532	\$5,581,866	\$7,191,077	\$11,554,099
<b>Capital Outlay</b>	\$137,366	\$157,074	\$0	\$0
<b>TOTAL</b>	<b>\$19,350,307</b>	<b>\$18,509,357</b>	<b>\$19,526,703</b>	<b>\$26,169,293</b>

QUESTIONS?

