



**BN 2023-2025**

April 27, 2023

# Significant Changes: All Public Works Divisions

1. Fuel: Updated to account for inclusion of electric vehicles in the fleet, changing work habits (hybrid/work from home)
2. Technical: Shifted cost burden that was previously placed in the technical line item to small tools and other line items
3. Licensing: Updated to coincide with actual expenditures for Cartegraph and other related software expenses
4. Small Tools: We have increased this line item to account for actual expenditures
5. Infrastructure: Increased this line item to account for inflationary impacts on all system maintenance related items (Materials).
6. Chemicals: Increased to account for anticipated chemical costs for the Treatment Plant operation requirements
7. Training: Increased due to Commercial Drivers License training requirements for new hires
8. Utilities: Updated to coincide with actual expenditures
9. Disposal: Increased to account for the actual costing of disposal at Dry Creek Landfill due to significant rate increase



# Public Works– Water

The [Water Division](#) consists of Supply, Treatment, Distribution and Conservation. The core of the water system includes Hosler Dam and Reeder Reservoir, a water treatment plant, over 119 miles of distribution piping, six booster pump-stations, telemetry equipment, 32 pressure relief valves, 1,281 hydrants and four potable water storage reservoirs providing 6.7 million gallons of storage

- The focus for the Water Division is to provide the highest quality drinking water for the community, comply with required standards and reporting, maintain the storage, treatment and distribution system

## Regulatory:

- The Oregon Health Authority provides regulatory oversight for the treatment and distribution of potable water
- The Federal Energy Regulatory Commission provides regulatory oversight on Hosler Dam as the City is a generator of hydroelectric power



# BN 2023/25 Priorities

Water

- Risk Reduction
- CEAP Execution
- Affordability
- Customer Service Focus

Water Management & Conservation Plan Update

Proactive Maintenance

Regulatory Compliance (OHA)

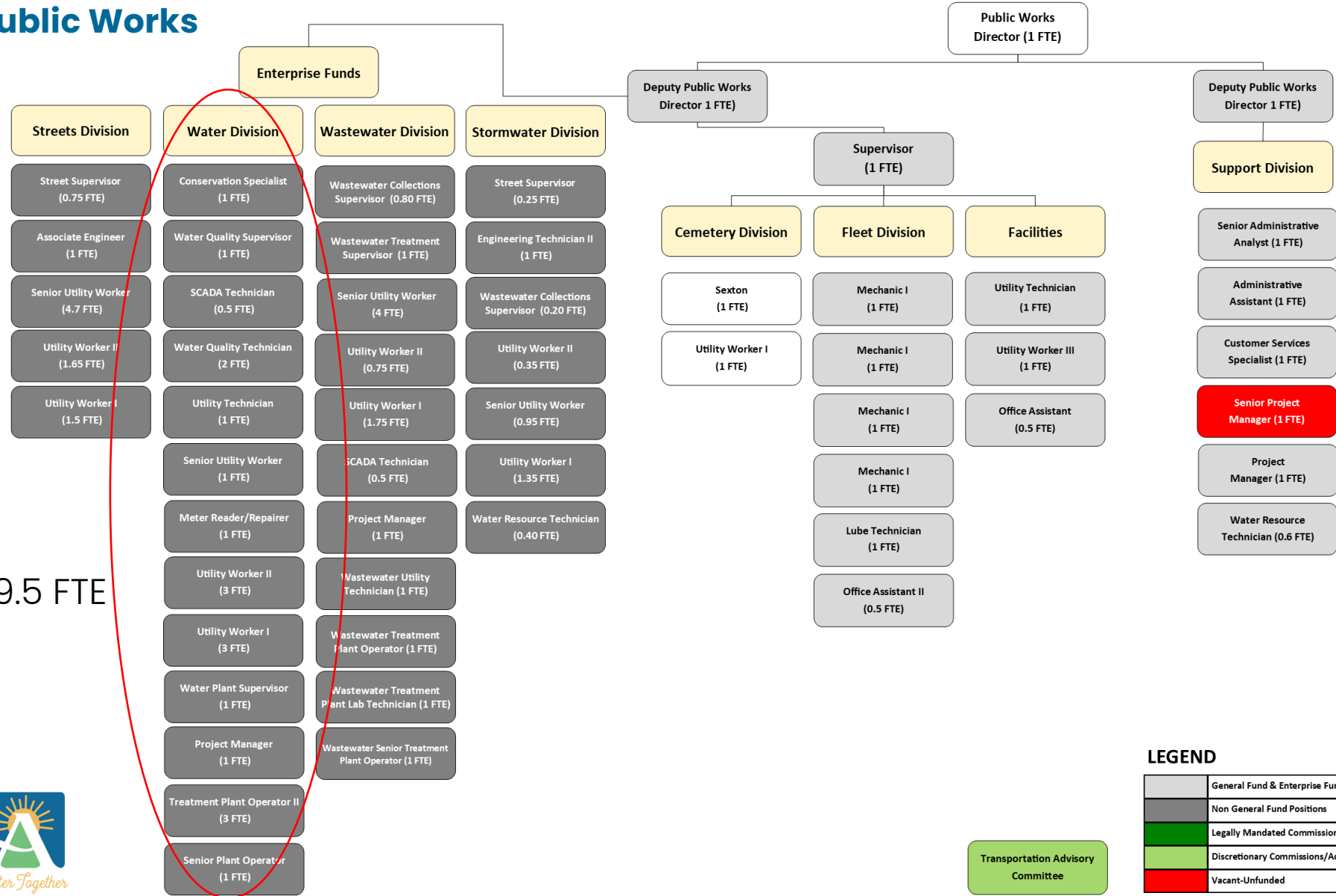
Capital Projects Delivery

Hosler Dam Comprehensive Assessment Project & Report

Finalize the new Talent-Ashland-Phoenix (TAP) Intertie Operating Intergovernmental Agreement



# Public Works



19.5 FTE



**LEGEND**

	General Fund & Enterprise Fund Positions
	Non General Fund Positions
	Legally Mandated Commissions/Committees
	Discretionary Commissions/Advisory Boards
	Vacant-Unfunded

Transportation Advisory Committee



# BN 2023/25 Proposed

## PW-Water Supply

	BN 2017/19 Actual	BN 2019/21 Actual	BN 2021/23 Adopted	BN 2023/25 Proposed
<b>Capital Outlay</b>	\$1,244,051	\$582,400	\$6,625,170	\$6,700,206
<b>Material and Services</b>	\$934,785	\$1,307,741	\$1,279,430	\$1,539,612
<b>Debt Services</b>	\$19,047	\$373,085	\$255,732	\$237,003
<b>Personnel Services</b>	\$110,546	\$0	\$0	\$0
<b>TOTAL</b>	<b>\$2,308,430</b>	<b>\$2,263,226</b>	<b>\$8,160,332</b>	<b>\$8,476,821</b>

## PW-Water Treatment

	BN 2017/19 Actual	BN 2019/21 Actual	BN 2021/23 Adopted	BN 2023/25 Proposed
<b>Capital Outlay</b>	\$1,478,478	\$1,965,155	\$16,294,000	\$45,780,165
<b>Material and Services</b>	\$1,214,484	\$1,493,481	\$1,662,126	\$1,877,753
<b>Personnel Services</b>	\$1,216,000	\$1,197,344	\$1,582,021	\$1,795,155
<b>Debt Services</b>	\$282,173	\$457,628	\$150,390	\$75,195
<b>TOTAL</b>	<b>\$4,191,134</b>	<b>\$5,113,607</b>	<b>\$19,688,537</b>	<b>\$49,528,267</b>

# BN 2023/25 Proposed

## PW-Water Distribution

	BN 2017/19 Actual	BN 2019/21 Actual	BN 2021/23 Adopted	BN 2023/25 Proposed
<b>Material and Services</b>	\$4,237,122	\$4,586,496	\$4,935,094	\$5,423,566
<b>Capital Outlay</b>	\$2,749,293	\$902,747	\$2,939,700	\$5,010,800
<b>Personnel Services</b>	\$2,058,123	\$2,198,029	\$2,291,728	\$3,020,322
<b>Debt Services</b>	\$500,276	\$654,968	\$536,458	\$413,316
<b>TOTAL</b>	<b>\$9,544,814</b>	<b>\$8,342,239</b>	<b>\$10,702,980</b>	<b>\$13,868,004</b>

## PW-Water Conservation

	BN 2017/19 Actual	BN 2019/21 Actual	BN 2021/23 Adopted	BN 2023/25 Proposed
<b>Material and Services</b>	\$187,424	\$186,516	\$334,168	\$242,294
<b>Personnel Services</b>	\$294,692	\$170,571	\$216,459	\$221,996
<b>TOTAL</b>	<b>\$482,115</b>	<b>\$357,086</b>	<b>\$550,627</b>	<b>\$464,290</b>

## PW-SDC Water

	BN 2017/19 Actual	BN 2019/21 Actual	BN 2021/23 Adopted	BN 2023/25 Proposed
<b>Capital Outlay</b>	\$449,586	\$339,464	\$2,926,300	\$8,659,843
<b>Debt Services</b>	\$430,365	\$430,597	\$427,806	\$327,511
<b>Material and Services</b>	\$3,502	\$138,541	\$450,000	\$150,000
<b>TOTAL</b>	<b>\$883,453</b>	<b>\$908,602</b>	<b>\$3,804,106</b>	<b>\$9,137,354</b>

QUESTIONS?





# Public Works– Wastewater

The [Wastewater Division](#) consists of collection and treatment of wastewater. The core of the system includes 112.9 miles of collection system piping, 2,245 manholes, six (6) lift stations, telemetry equipment and a wastewater treatment plant.

- The focus for the Wastewater Division is to ensure all sewage is effectively collected and treated to regulated standards for release into Ashland/Bear Creeks.

## Regulatory:

- The City operates under a National Pollution Discharge Permit (NPDES) that is overseen by the Department of Environmental Quality (DEQ)



# BN 2023/25 Priorities

- Risk Reduction
- CEAP Execution
- Affordability
- Customer Service Focus

Increase system resilience

Inflow/Infiltration Reduction

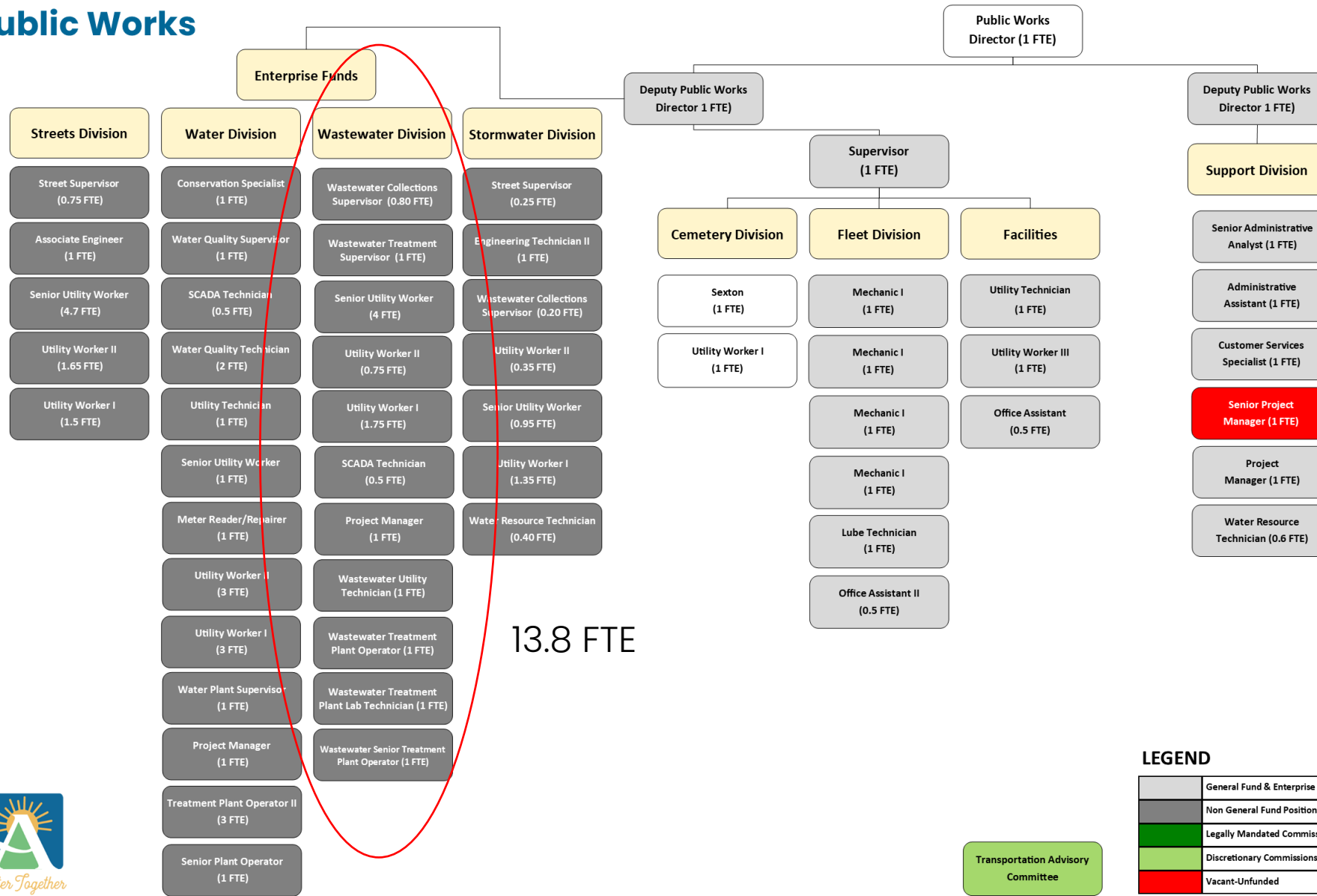
Regulatory Compliance (NPDES)

Capital Projects Delivery

Proactive maintenance



# Public Works



# BN 2023/25 Proposed

## PW-Wastewater Collection

	BN 2017/19 Actual	BN 2019/21 Actual	BN 2021/23 Adopted	BN 2023/25 Proposed
<b>Material and Services</b>	\$3,329,252	\$3,357,304	\$3,130,028	\$3,474,544
<b>Personnel Services</b>	\$1,320,318	\$1,318,296	\$1,347,087	\$1,498,896
<b>Capital Outlay</b>	\$358,488	\$728,991	\$1,027,200	\$2,013,440
<b>Debt Services</b>	\$144,650	\$226,691	\$92,914	\$88,088
<b>TOTAL</b>	<b>\$5,152,707</b>	<b>\$5,631,282</b>	<b>\$5,597,229</b>	<b>\$7,074,968</b>

## PW-Wastewater Treatment

	BN 2017/19 Actual	BN 2019/21 Actual	BN 2021/23 Adopted	BN 2023/25 Proposed
<b>Capital Outlay</b>	\$1,745,877	\$549,557	\$7,374,200	\$6,485,475
<b>Material and Services</b>	\$3,969,935	\$3,369,486	\$3,719,501	\$4,505,395
<b>Debt Services</b>	\$3,361,226	\$4,906,454	\$258,134	\$254,841
<b>Personnel Services</b>	\$1,445,060	\$1,507,581	\$1,715,327	\$2,090,037
<b>TOTAL</b>	<b>\$10,522,098</b>	<b>\$10,333,077</b>	<b>\$13,067,162</b>	<b>\$13,335,749</b>

## PW-SDC Wastewater

	BN 2017/19 Actual	BN 2019/21 Actual	BN 2021/23 Adopted	BN 2023/25 Proposed
<b>Material and Services</b>	\$13,669	\$166,640	\$700,000	\$0
<b>Capital Outlay</b>	\$85,242	\$73,877	\$2,717,100	\$1,650,525
<b>TOTAL</b>	<b>\$98,911</b>	<b>\$240,517</b>	<b>\$3,417,100</b>	<b>\$1,650,525</b>

QUESTIONS?



# Public Works– Stormwater

The [Stormwater Division](#) consists of collections with staff support included with the Street and Wastewater Divisions. The core of the storm drain system includes 133.4 miles of storm drainage pipe and culverts, 4,348 inlets/catch basins, 990 manholes, and 449 outfalls.

- The focus for the Stormwater Division is to assess, maintain and repair all storm water lines, ditches and water quality treatment structures to effectively move storm flows from streets to waterbodies and reduce contaminants and potential flooding.
- The stormwater conveyance and outfall system operate under a Department of Environmental Quality (DEQ) MS4\* permit, which regulates maintenance and inspection schedules in addition to public outreach and education regarding stormwater conveyance and treatment.

\*A municipal separate storm sewer system, commonly called an MS4, is a conveyance or system of conveyances, such as roads with drainage systems, municipal streets, catch basins, curbs, gutters, constructed channels or storm drains, owned or operated by a governmental entity that discharges to waters of the state.





# BN 2023/25 Priorities

- Risk Reduction
- CEAP Execution
- Affordability
- Customer Service Focus

Increase system resilience

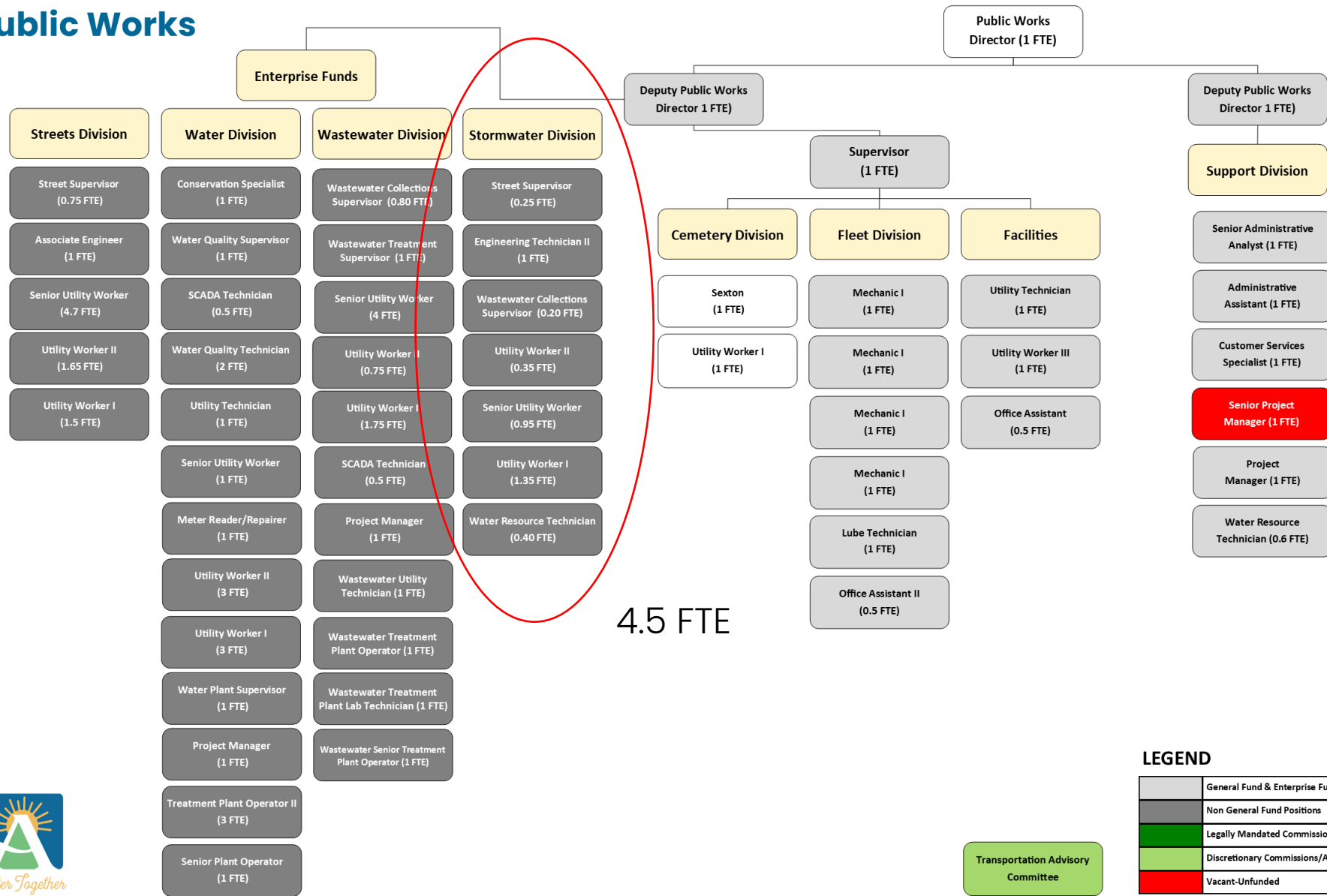
Regulatory Compliance (MS4)

Capital Projects Delivery

Proactive maintenance



# Public Works



**LEGEND**

	General Fund & Enterprise Fund Positions
	Non General Fund Positions
	Legally Mandated Commissions/Committees
	Discretionary Commissions/Advisory Boards
	Vacant-Unfunded



# BN 2023/25 Proposed

## PW-Storm water Collection

	BN 2017/19 Actual	BN 2019/21 Actual	BN 2021/23 Adopted	BN 2023/25 Proposed
<b>Personnel Services</b>	\$635,997	\$623,903	\$894,967	\$1,123,278
<b>Material and Services</b>	\$564,873	\$839,506	\$782,526	\$929,396
<b>Debt Services</b>	\$24,499	\$23,700	\$23,300	\$22,094
<b>Capital Outlay</b>	\$40,193	\$16,428	\$657,538	\$1,258,974
<b>TOTAL</b>	<b>\$1,265,561</b>	<b>\$1,503,536</b>	<b>\$2,358,331</b>	<b>\$3,333,742</b>

## PW-SDC Storm water Line Items

	2023 - 24 Budget	2024 - 25 Budget
<b>Capital Outlay</b>		
Improvements Other than Bldgs		
Capitalized Projects	\$15,169	\$49,739
<b>IMPROVEMENTS OTHER THAN BLDGS TOTAL</b>	<b>\$15,169</b>	<b>\$49,739</b>
<b>CAPITAL OUTLAY TOTAL</b>	<b>\$15,169</b>	<b>\$49,739</b>
<b>TOTAL</b>	<b>\$15,169</b>	<b>\$49,739</b>

QUESTIONS?

