



## AGENDA FOR BEE CITY USA - ASHLAND MEETING

January 10, 2023

3:00 p.m. – 4:30 p.m.

Location: Zoom

<https://us02web.zoom.us/j/82557532890>

- I. CALL TO ORDER, CHECK-INS, AND WELCOME
- II. APPROVAL OF MINUTES
  1. Approval of Minutes from the 9-20-22 meeting
- III. PUBLIC PARTICIPATION (10 minutes)
- IV. ADDITIONS OR DELETIONS TO THE AGENDA
  1. Introduce Nick Pflug, new applicant to the Subcommittee
- V. UNFINISHED BUSINESS
  1. Pollinator Garden Tour 2023
    - Schedule tour date
    - Program description, due end of January 2023
    - Planning dates for garden commitment, booklet production and booklet distribution
    - Committee member assignments
    - Potential volunteers
    - Connect with Ashland Garden club to involve rather than compete
  2. Finding a firewise pollinator garden
  3. Planning a pollinator garden social
- VI. NEW BUSINESS
  1. Report-out individual 2022 efforts and contributions for annual report.
  2. Volunteer hours reporting – provide a rough estimate in meeting
  3. East Main Park plans to be discussed by Commission, January 11, 2023
- VII. OTHER ITEMS FROM COMMITTEE MEMBERS
  - 1.
- VIII. UPCOMING MEETING DATES

May \_\_\_?

If you wish to virtually attend the Bee City USA Ashland subcommittee meetings, send an email to [libby.vanwyhe@ashland.or.us](mailto:libby.vanwyhe@ashland.or.us) by 10:00 a.m. on the day of the meeting.

In order to virtually attend or listen to the commission meeting, please provide the following information:

- 1) make the subject line of the email "Bee City USA Meeting Participation Request",
- 2) include your name,
- 3) specify the date and commission meeting you wish to virtually attend or listen to,
- 4) specify if you will be participating by computer or telephone, and
- 5) the name you will use if participating by computer, or the telephone number you will use if participating by telephone.
- 6) Please note, participants that sign up to virtually attend will only be invited to speak during the public participation forum, if you have provided your topic ahead of time. If you wish to provide oral testimony, please specify the agenda item on which you would like to speak.

Staff will email you back with the information necessary to join the meeting upon request.

# ASHLAND PARKS & RECREATION COMMISSION

340 S PIONEER STREET • ASHLAND, OREGON 97520

COMMISSIONERS:

Rick Landt  
Jim Lewis  
Jim Bachman  
Julian Bell  
Leslie Eldridge



Michael A. Black, AICP  
Director

541.488.5340  
AshlandParksandRec.org  
parksinfo@ashland.or.us

**TO:** Bee City USA Ashland Subcommittee

**FROM:** Libby VanWyhe, Nature Center Manager

**DATE:** January 10, 2023

**SUBJECT:** Further explanation of agenda items for Subcommittee Meeting on 1/10/23

---

On Tuesday, January 10, 2023, the Bee City USA Ashland Subcommittee will conduct their ~~fall~~ winter quarterly meeting. At this meeting, the following items will be discussed.

## UNFINISHED BUSINESS

1. Pollinator Garden Tour 2023
  - a. Schedule Tour date
  - b. Program description, due by end of January 2023
  - c. Planning dates for garden commitment, booklet production and booklet distribution
  - d. Committee member assignments
  - e. Potential Volunteers
  - f. Connect with Ashland Garden club to involve rather than compete

*The garden tour should be the subcommittee focus at this time, because we have missed having a tour during the pandemic years and this type of outreach is a core purpose of BeeCity USA member organizations. We can rely on prior year materials and Libby's expertise to produce the announcement and the brochure. The group needs to choose a date, understand the schedule needs and implement a plan to identify gardens and gardeners willing to be on the tour this year. In particular, how many gardens would be our target number for this year's tour? Who will work on this?*

2. Finding a Firewise Pollinator Garden  
*Ashland Wildfire Safety Commission, and particularly, the Volunteer Wildfire Risk Assessors, would like to have at least one example of a fire-adapted pollinator garden on the tour. Charisse Sydoriak is our contact person.*
3. Planning a Pollinator Garden Social  
*Last year, the group was still reluctant to plan an in-person meeting. In advance of this year's pollinator garden tour, does the subcommittee want to hold a social event this winter/early*

*spring? The Garden Social serves as a continuing engagement for certified garden owners and, if it meets during planning for the tour, can serve to solicit and confirm gardeners willing to be part of the tour. A few volunteers need to be identified to help plan this event, with Libby's support.*

## **NEW BUSINESS**

1. Report-out individual 2022 efforts and contributions for annual report.

*The City submits an annual report to BeeCity USA as part of its obligation to maintain committee status. Please come prepared to talk about the variety of activities you have done this year. Photos and brief written descriptions can be produced with individual follow-up. Kate will lead this year's report preparation. The report is due at the end of January.*

2. Volunteer Hours Reporting – Provide a rough estimate in meeting  
*At a minimum, come with an estimate of hours spent. Helpful to include the type of activity conducted. Includes everything from certified garden application inspections, outreach, design consultation, meeting time, pertinent training, etc.*
3. *The East Main Park plans are on the APRC agenda for Wednesday, January 11. Does the committee have succinct comments to forward to the commission? The minutes of our September meeting, being approved today, may not yet have been forwarded to the full APRC.*

## **OTHER ITEMS FROM COMMITTEE MEMBERS**



## APPLICATION FOR APPOINTMENT TO BEE CITY SUBCOMMITTEE

Please type or print answers to the following questions and submit to Parks and Recreation at 340 Pioneer St, or email [libby.vanwyhe@ashland.or.us](mailto:libby.vanwyhe@ashland.or.us).  
If you have any questions, please feel free to contact the Parks and Recreation Office at 488-5340. **Attach additional sheets if necessary.**

Name Nicholas Pflug

Address 1361 Quincy St, #3C

Occupation: Bridge Communications Coordinator Phone: Home: 541.778.7827 \_\_\_\_\_

Work: “ “ \_\_\_\_\_

Email: [pflugn@sou.edu](mailto:pflugn@sou.edu) \_\_\_\_\_

Fax \_\_\_\_\_

### 1. Education Background

What schools have you attended? Southern Oregon University, Grossmont Community College

What degrees do you hold? N/A

What additional training or education have you had that would apply to this position?  
\_\_\_\_\_  
\_\_\_\_\_

### 2. Related Experience

What prior work experience have you had that would help you if you were appointed to this position?  
\_\_\_\_\_  
\_\_\_\_\_

Several years' experience on a farm, several years' experience research writing  
\_\_\_\_\_  
\_\_\_\_\_

Do you feel it would be advantageous for you to have further training in this field, such as attending conferences or seminars? Why? Yes, because it is my mission to always be a good steward to the land, and pollinators are a huge part of humans' ability to inhabit the land at all.  
\_\_\_\_\_



**3. Interests**

Why are you applying for this position? Because it is an awesome opportunity to work and be in touch with nature in my community.

---

---

**4. Availability**

Are you available to attend special meetings, in addition to the regularly scheduled meetings? Do you prefer day or evening meetings? Yes I am available, evenings are best.

---

**5. Additional Information**

How long have you lived in this community? I have lived in Ashland for about one year, and I have lived in various places around the Rogue Valley for nearly eight years.

Please use the space below to summarize any additional qualifications you have for this position

---

Acting SOU Pollinator Club Vice President

---

SOU Bridge Program Communications Coordinator

---

Former SOU Farm employee

---

Strong passion for betterment of self and of the earth

---

---

---

---

---

---

---

---

---

---

27 September 2022

---

Date

X *Nicholas Pflug*

---

Signature



## DRAFT MINUTES FOR BEE CITY USA - ASHLAND MEETING

September 20, 2022

3:00 p.m. – 5:00 p.m.

Location: Zoom

<https://us02web.zoom.us/j/85097204485>

In attendance: Kate Jackson (Chair), Albert Pepe, Kristina Lefever, Carolyn Reed, Leslie Eldridge (Parks Commissioner), Tara Kiewel (Administrative Analyst), Piper Von Chamier, Erin Gambacorta, Rachel Dials (Deputy Director)

### I. CALL TO ORDER, CHECK-INS, AND WELCOME

Welcome to Carolyn new member of the Bee City USA Subcommittee  
Introductions of the sub-committee members.

### II. APPROVAL OF MINUTES

#### 1. Approval of Minutes from the 6-30-22 meeting

Rephrase: "we should be cognizant of how we stress the importance of native bees and other pollinators over honeybees and beehives." To "Our preference is to support native bees and other pollinators over honeybees and hives."

On #4, Strike first two sentences, and the last sentence referring to coordinating with Faye and her schedule.  
Spelling error change "Bex" to "Becs".

With these edits, Albert moves to approve, all voted in favor.

Minutes are approved.

### III. PUBLIC PARTICIPATION (10 minutes)

No members of the public are present.

### IV. ADDITIONS OR DELETIONS TO THE AGENDA

### V. EAST MAIN PARK LANDSCAPING (1 hour)

#### 1. Project summary from Landscape Architects

In Meeting Materials: **East Main Street Park Schematic Design**

Project planning began in 2020. We have been working with Piper and her team on the design of the project. APRC is meeting with user groups to get more information about what user-groups want. They are currently working on the details of the design, and seeking feedback before construction diagrams are going to be drawn up.

Landscapers shared current schematic design, including:

parking with rain gardens, dog park (<1 acre), covered structures, multi-use path, less developed walking paths, Nature Play Area, space for pollinator planting, mason bee towers w/ educational piece to it, bike park,

pump track, multi-sport court, community garden (.5 acre), garden parking, trees, hedges around the perimeter, safety lighting, and low-level parking lighting.

Area around the nature playground has a mowed lawn and places for gathering.

Nature play area is surrounded by a split rail fence and pollinator planting areas

The parking stalls are proposed with permeable pavers.

Lighting will be minimal and will be kept low to the ground.

They are interested in using solar panels on some of the shade structures and pavilions

There are only blue porta-potties, rather than restrooms, for cost and security.

There are opportunities for pollinator planting around the community garden.

Community garden has the opportunity for including a food forest, ADA raised beds, a shed, mason bee houses

A currently undesigned area has been proposed as a possible orchard, and there an area near that for pollinator planting the proposed orchard area will need to be adopted by the community gardeners.

The Abbot street entrance, and the passive entrance for gardener parking, the reason that the community garden is in its current location.

Rain garden is proposed as a place where dogs can play in water during the winter months.

There is fence-line around the property.

TID water will be available, and City will water also be brought to the site.

Aside from the dog-park, meadow and mowed-lawn, the rest of the park is on drip irrigation.

They are proposing a drought-tolerant meadow seed mix for the area without irrigation. Overhead spray irrigation is planned for just the first two years of establishment only. Then, the irrigation can be cut off entirely and irrigation heads could be cut off and enclosed in boxes.

They haven't observed star thistle growing in the meadow area yet, but the topsoil won't be removed in this zone, so there will be a seed bank. Suggest that tarp cover be used in this area to solarize the weed seed bank.

There are opportunities for planting along the front of the park, where the sidewalk curves.

There will be screening trees planted, as well as rain garden plants for stormwater treatment.

## 2. Bee City USA Subcommittee provides input

Dark-sky lighting is important to birds and night pollinators. Suggest keeping lights low to the ground.

Suggest an electric vehicle charging station, possibly supported by solar panels.

Vesper Meadow, Freshwater Trust and Rogue Native Plant Partnership are working on bio-regional specific seed mixes.

For the meadow, native bunch grasses persist in the dry season. Many other native plants *can* survive without irrigation, but they disappear during the summer and are vulnerable to invasion wildland weeds.

How will you remove the non-native grasses? Black plastic solarization?

Alternatives to individually-rented community garden plots? Consider other models for shared garden spaces.

Non-native grasses will invade into the meadow, and seeds may travel from the meadow to the lawn.

Who is doing the maintenance of the pollinator areas? Parks is responsible, and we will need to mobilize volunteers to maintain the pollinator gardens.

Libby is wondering how much area is established as pollinator garden, and points out that garden maintenance is complex and isn't appropriate for volunteer work parties.

There are lots of educational and interpretive possibilities in the park to make sure people understand bee diversity and the fact that there's a very low risk of bee sting. Could there be a wayside sign for this educational piece?

Suggest planting camas in the wet spots.

Deer herbivory is a big issue, and most of the pollinator plants and even native tree species will be eaten. All plantings need to be protected from herbivory.

Native trees are host plants for many native pollinators. Please give preferences to native species.



The Tree Commission and the Conservation Division of the City have a street-tree guide, which we recommend you use. There is also a fire-wise list to refer to.

If possible, committee members would like to see the community garden be a larger part of the plan.

- Please email Libby or Tara, if anyone has comments on East Main Park, that we didn't have time to articulate.

## VI. UNFINISHED BUSINESS

### 1. Developing a scope of work for Firewise plant database

If we have a scope of work for this project, then Charise and Kate could bring this proposal to SOU students as a possible Capstone.

This fall, there will be an SOU class called ES210, in which students identify their Capstones. Bee City USA – Ashland could propose a project idea, either a research capstone or an applied capstone.

- Leslie will tell Kate when there's an opportunity to present Capstone project ideas to SOU students.

Carolyn has an interest in firewise plants, and would like to work on this project with Kate and Charise.

- Kate and Carolyn will focus on developing the Capstone project description.

### 2. Establishing a working group for Firewise Pollinator Garden Tour (including approved gardeners)

The tour is quite a bit of work. Libby will commit to helping with the marketing and the development of the tour booklet.

We may need to seek help from the approved pollinator gardeners, to help plan and conduct the tour.

Ideally, we would identify one or two approved pollinator gardens that are also Firewise. Kate's garden is a good example of this cross-over.

- Kate will ask Charise and Brian Hendrix how they want to be involved in the pollinator tour, and ask them if we have any approved pollinator gardens that also meet the Firewise criteria.

- Kristina will contact Sheri Morgan, who is active with the Jackson County Master Gardeners out of OSU Extension. Find out if Jackson County Master Gardeners are going to have a tour in 2023, and make sure that we are collaborating rather than competing.

- Kristina will share the planning lists for launching the pollinator tour.

- Libby will share details about the tour, including the number of gardens usually featured, the planning timeline, Pollinator Garden Social, and target dates for marketing in APRC PlayGuide.

This working group for the tour will include: Kristina and Libby for now. Kate will be looking at the first steps for coordinating with the Firewise component.

### 3. Update on the management of Approved Pollinator Garden List

- Libby will meet with Kristina to go over the Approved Pollinator Garden spreadsheet, and ask some remaining questions

## VII. NEW BUSINESS

1. Welcome Carolyn Reed as our newest member

## VIII. OTHER ITEMS FROM COMMITTEE MEMBERS

1. Leslie wants to talk about her goals for interfacing with SOU students. Leslie is hoping to find a reliable student to work with the subcommittee.

2. Albert met with the board of the Rogue Valley Farmer's Market, and needs to put together a proposal if we would like to table.

- Albert will follow up with Kate about farmers market tabling.

## IX. UPCOMING MEETING DATES

### January

- Libby will Doodle Poll for the second or third week in January. 3-4:30

## ACTION ITEMS

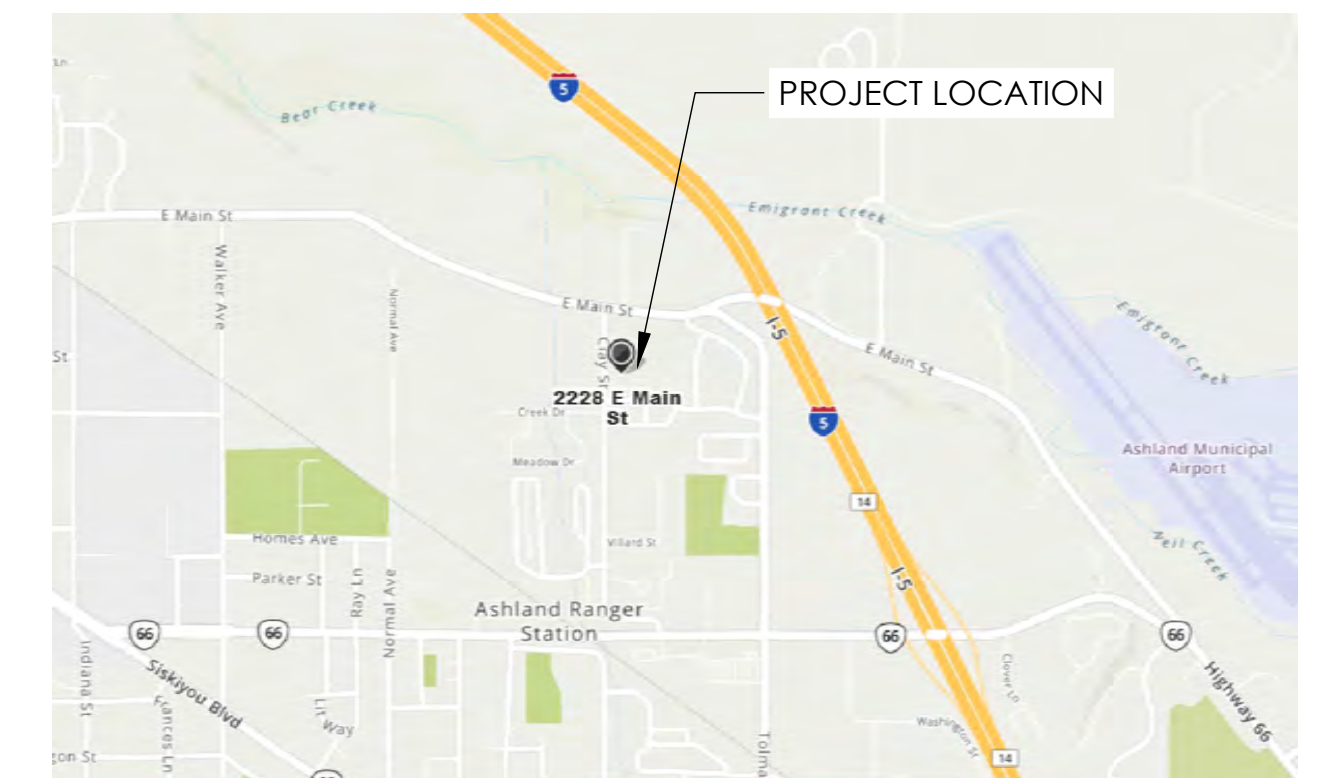
- Please email Libby or Tara, if anyone has comments on East Main Park, that we didn't have time to articulate.
- Leslie will let Kate know when there's an opportunity to present Capstone project ideas to SOU students.
- Kate and Carolyn will focus on developing the Capstone project description for the Firewise plant database
- Kate will ask Charise and Brian Hendrix how they want to be involved in the pollinator tour. Also ask them if we have any approved pollinator gardens that also meet the Firewise criteria.
- Kristina will contact Sheri Morgan, of Jackson County Master Gardeners. Find out if Jackson County Master Gardeners are going to have a tour in 2023, and make sure that we are collaborating rather than competing.
- Kristina will share the planning lists for launching the pollinator tour.
- Libby will share details about the tour, including the number of gardens usually featured, the planning timeline, Pollinator Garden Social, and target dates for marketing in APRC PlayGuide.
- Libby will meet with Kristina to go over the Approved Pollinator Garden spreadsheet, and ask some remaining questions.
- Albert will follow up with Kate about Rogue Valley Farmers Market tabling.
- Libby will Doodle Poll for the second or third week in January. Propose times from 3-4:30.



## PROJECT NARRATIVE

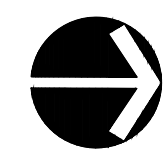
East Main Street Park is a park that will be teaming with dogs, dog owners, children of all ages, bike riders of all ages, neighbors, and community gardens. The park offers options for multiple park activities for the entire community to enjoy. Passive versus active recreation sets the tone for each area with common spaces creating boundaries between the different program elements. The park functions for multiple generations and user types and is grounded by the environment through material changes, signage, and sensory cues. Maintenance and longevity of the park is being explored and will continue to be researched throughout the remainder of the design process.

## PROJECT LOCATION MAP



## SHEET INDEX

L0.0	ILLUSTRATIVE SITE PLAN
L1.0	LANDSCAPE SITE PLAN
L2.0	COMMUNITY GARDEN PLAN ENLARGEMENT
L2.1	CENTRAL PLAY AREA PLAN ENLARGEMENT
L2.2	BIKE PARK PLAN ENLARGEMENT
L2.3	DOG PARK PLAN ENLARGEMENT
L3.0	PLANTING IMAGERY
L4.0	SUSTAINABLE APPROACH DIAGRAMS



SCALE: 1/32" = 1'-0"  
 0' 16' 32' 64' 96'



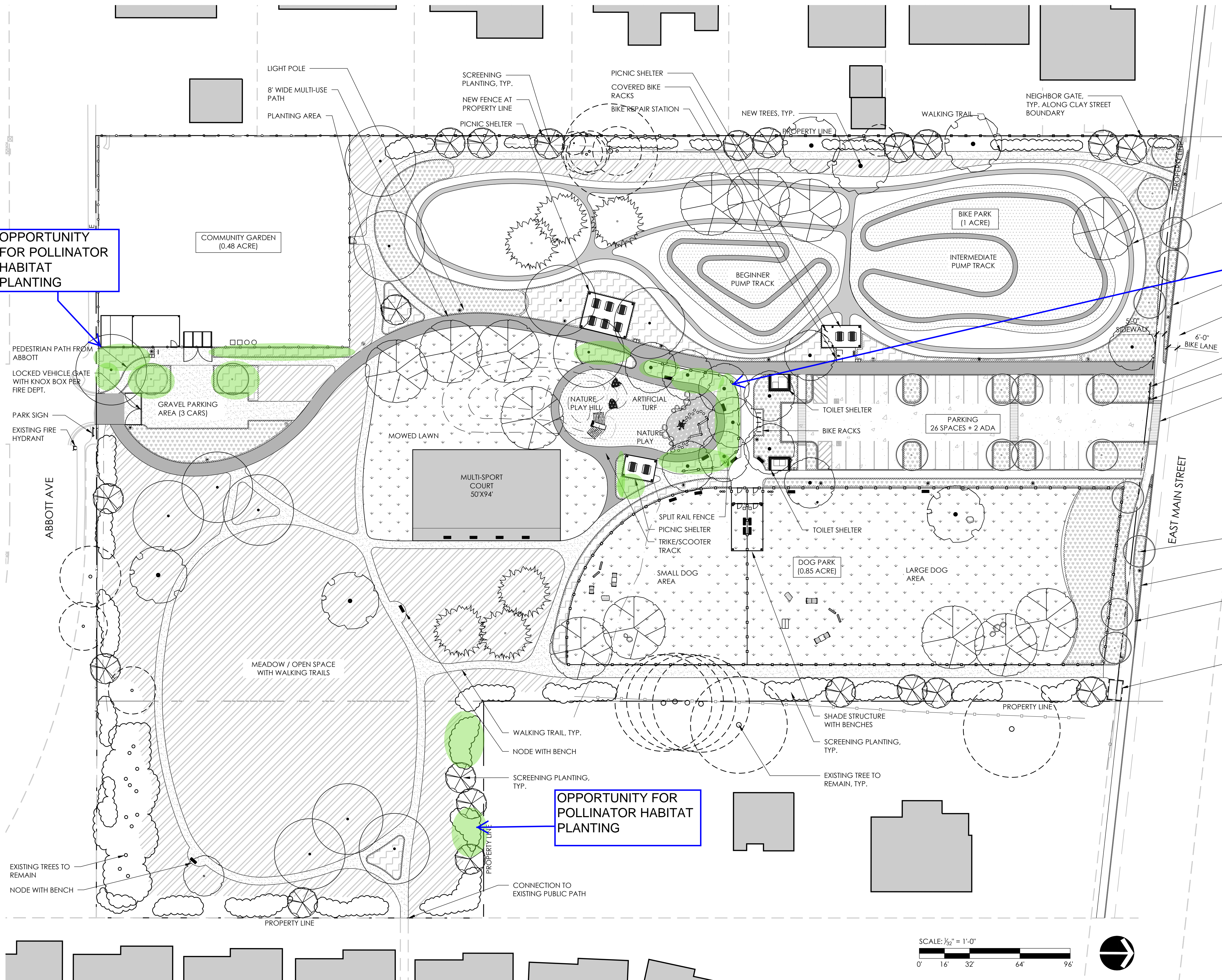
EAST MAIN STREET PARK  
 2228/2290 EAST MAIN STREET  
 ASHLAND, OREGON 97520

ILLUSTRATIVE SITE PLAN

SCHEMATIC  
 DESIGN

L0.0

PROJECT NO. 2102  
 APRIL 19, 2022  
 TEAM: PVC, CG, EG

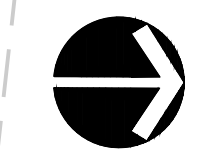
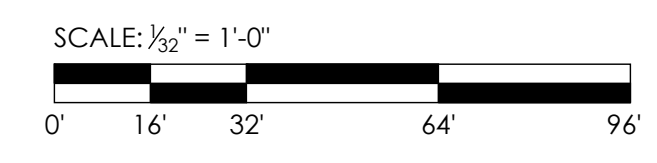


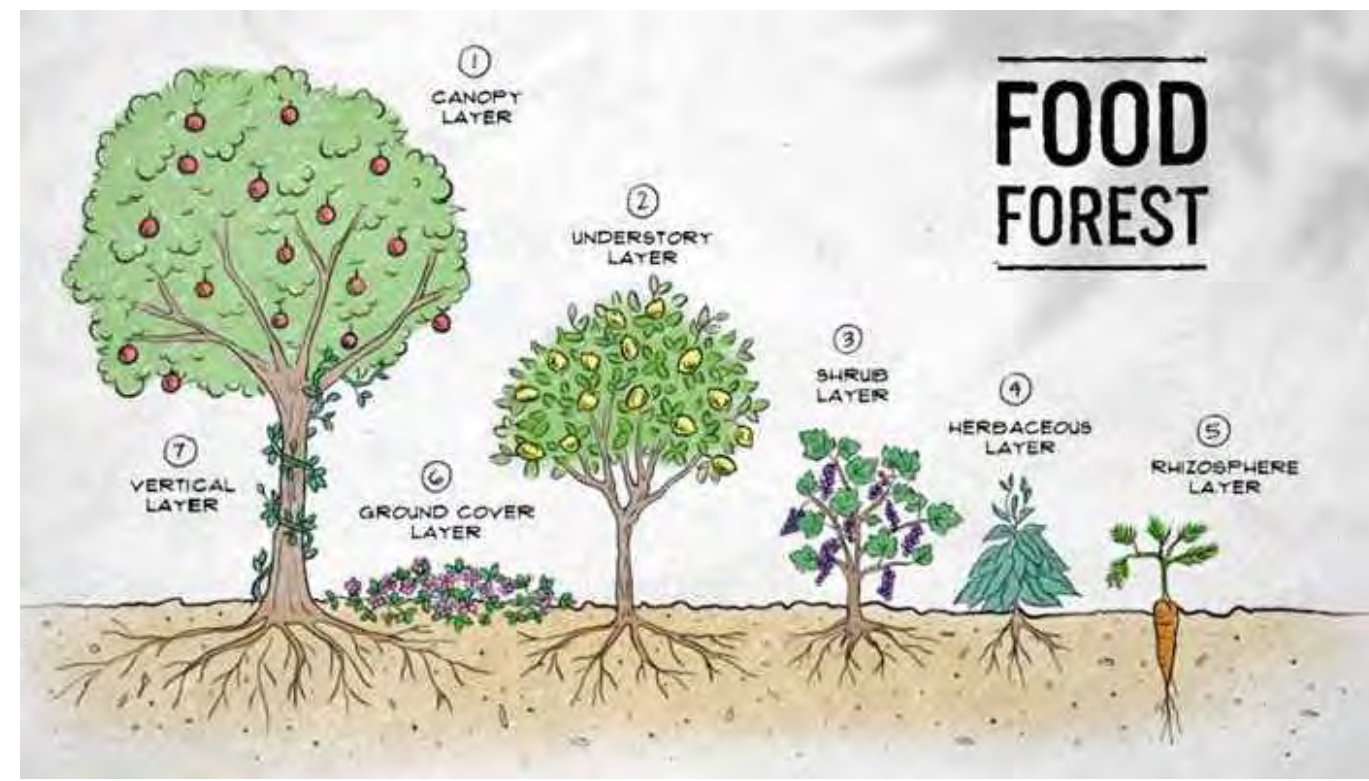
SYMBOL	DESCRIPTION	NOTES
[Pattern]	CONCRETE PAVING	
[Pattern]	ASPHALT PAVING	
[Pattern]	GRAVEL PAVING	
[Pattern]	ARTIFICIAL TURF	
[Pattern]	MOWED LAWN	
[Pattern]	MEADOW	SEE PLANT PALETTE
[Pattern]	PLANTING AREA	SEE PLANT PALETTE
[Pattern]	STORMWATER TREATMENT PLANTING AREA	SEE PLANT PALETTE
[Symbol]	BENCH	
[Symbol]	PICNIC TABLE	
[Symbol]	TOILET SHELTER	PORTABLE TOILETS WITH SHELTER
[Symbol]	BIKE RACK	
[Symbol]	BIKE REPAIR STATION	
[Symbol]	DRINKING FOUNTAIN	ADA ACCESSIBLE WITH PET BOWL
[Symbol]	GARBAGE & RECYCLING CANS	
[Symbol]	PARK SIGN	ASHLAND PARKS & RECREATION STANDARD
[Symbol]	DOG PLAY ELEMENTS	MAY INCLUDE SPRAY HYDRANT, BALANCE LOGS, HILL CLIMB, TUNNEL, ETC
[Symbol]	POLE LIGHT	STERNBERG STYLE POLE LIGHT, PER ASHLAND PUBLIC WORKS STANDARD
[Symbol]	DOG PARK FENCE & GATES	5' HIGH CHAIN LINK, BLACK VINYL COATED WITH BLACK POSTS
[Symbol]	COMMUNITY GARDEN FENCE & GATE	8' HIGH
[Symbol]	PLAY AREA FENCE	3' HIGH SPLIT RAIL FENCE
[Symbol]	GARDEN STORAGE SHED	
[Symbol]	GREEN WASTE / POTTING SOIL STOCKPILES	

OPPORTUNITY FOR POLLINATOR HABITAT PLANTING

OPPORTUNITY FOR POLLINATOR HABITAT PLANTING

OPPORTUNITY FOR POLLINATOR HABITAT PLANTING





FOOD FOREST APPROACH

FRUIT TREES

UNIVERSAL ACCESS VERTICAL GARDEN BEDS



COMMUNITY GARDEN BEDS

COMMUNITY GARDEN BEDS

EDIBLES IN FOOD FOREST

INSECT HOTEL

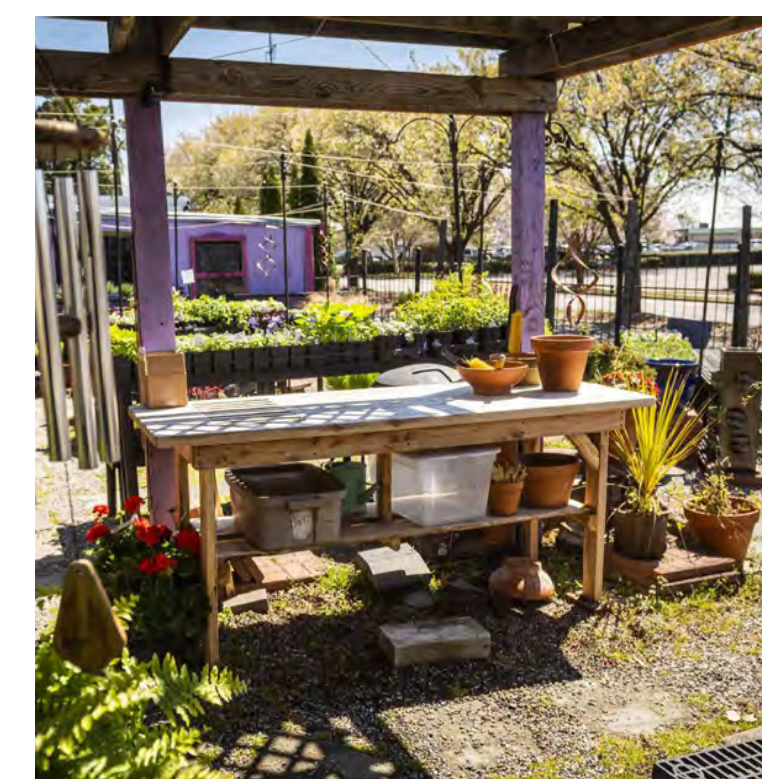


TOOL STORAGE SHED

SHADE PERGOLA WITH TABLES OR WORKBENCHES

MATERIALS BINS FOR SOIL, COMPOST, GREENWASTE

SEED LIBRARY



HIGH, ACCESSIBLE RAISED BEDS

BEDS WITH PATHWAYS

WORKBENCH



SCALE: 1/8" = 1'-0"  
0' 4' 8' 16' 24'



EAST MAIN STREET PARK  
2228/2290 EAST MAIN STREET  
ASHLAND, OREGON 97520

COMMUNITY GARDEN  
PLAN ENLARGEMENT  
SCHEMATIC  
DESIGN

L2.0

PROJECT NO. 2102  
APRIL 19, 2022  
TEAM: PVC, CG, EG



PICNICS



MULTI-SPORT COURT



TAI CHI



WOOD BENCH



MUSICAL PLAY



YOGA



HILL WITH TUNNEL



EMBANKMENT SLIDE AND STUMP STEPS



NATURAL CLIMBING STRUCTURES



NATURAL MATERIALS - STONE, WOOD, SAND, EARTH



NATURAL CLIMBING STRUCTURES



WOVEN SHELTER AND WOOD PICNIC TABLE



TRIKE & SCOOTER PATH



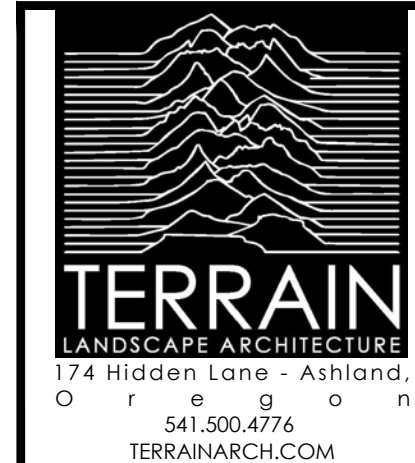
TRIKE & SCOOTER PATH



NATURAL CLIMBING STRUCTURES & EMBANKMENT SLIDE



SCALE: 1" = 10'-0"  
0' 5' 10' 20' 30'



EAST MAIN STREET PARK  
2228/2290 EAST MAIN STREET  
ASHLAND, OREGON 97520

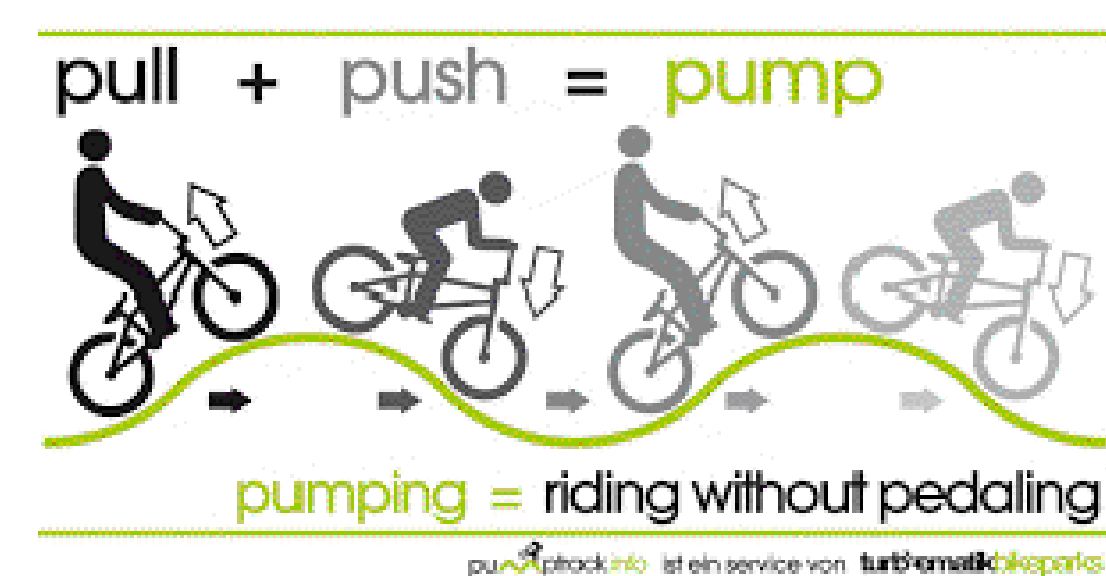
CENTRAL PLAY AREA  
PLAN ENLARGEMENT  
SCHEMATIC  
DESIGN

L2.1

PROJECT NO. 2102  
APRIL 19, 2022  
TEAM: PVC, CG, EG



SCALE: 1/8" = 1'-0"  
 0' 8' 16' 32' 48'



WHAT IS A PUMP TRACK



ASPHALT PUMP TRACKS FOR DIFFERENT SKILL LEVELS



ASPHALT PUMP TRACKS FOR DIFFERENT SKILL LEVELS



MOUNTAIN BIKE SKILLS COURSE



MOUNTAIN BIKE SKILLS COURSE



MOUNTAIN BIKE SKILLS COURSE



BIKE REPAIR STATION



SCALE: 1/8" = 1'-0"



OPEN SPACE



OPPORTUNITIES TO SOCIALIZE



SPRAY HYDRANT



BALANCE LOGS



TUNNELS



HILL CLIMB



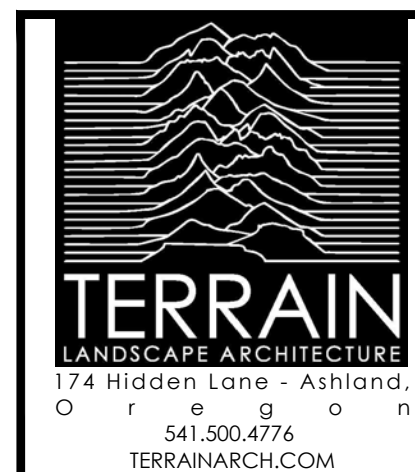
DRINKING FOUNTAIN WITH DOG BOWL



SEPARATE SPACES FOR SMALL AND LARGE DOGS



DOG POND



EAST MAIN STREET PARK  
2228/2290 EAST MAIN STREET  
ASHLAND, OREGON 97520

DOG PARK  
PLAN ENLARGEMENT  
SCHEMATIC  
DESIGN

L2.3

PROJECT NO. 2102  
APRIL 19, 2022  
TEAM: PVC, CG, EG



TREES



PLANTING NARRATIVE

Water conservation, climate responsiveness, and maintenance are integral parts of the overall landscape theme. All plant groups are laid out by hydrozones depending on water needs, exposure, soil and other site conditions. More than 70 % of the planting zones are low water use zones with drought tolerant plants.

The open meadow space consists of meadow grasses and native plants, which will receive only seasonal precipitation once established.

At the gathering areas and circulation nodes, vibrant drought-tolerant and pollinator friendly plants are used to highlight the areas most traveled and visited by the community. These planting beds are meant to be experienced up close with seasonal flowers, evergreen bone structure, and plantings that repeat along pathways.

The edges of the site will be planted with evergreen screening shrubs and trees to separate the residential lots from the park. The parking lots and East Main Street frontage consists of stormwater plants that can thrive with wet feet or dry periods during the summer. These bio retention planters are filled with grasses and perennials to create a uniform border along the street and in the parking lot.

Large oak trees form groves throughout the site for habitat restoration and shade. Tulip trees create two central shady arcs that contain the main gathering areas and heart of the site. Additionally, a few coniferous trees and smaller flowering trees are sprinkled throughout for seasonal interest and to emphasize the natural surroundings.

SCREENING PLANTING



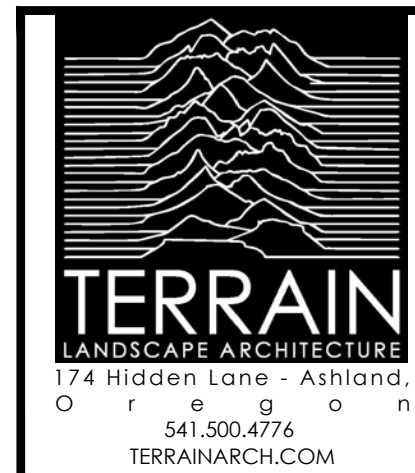
STORMWATER TREATMENT PLANTING



XERISCAPE / POLLINATOR FRIENDLY PLANTING



MEADOW PLANTING



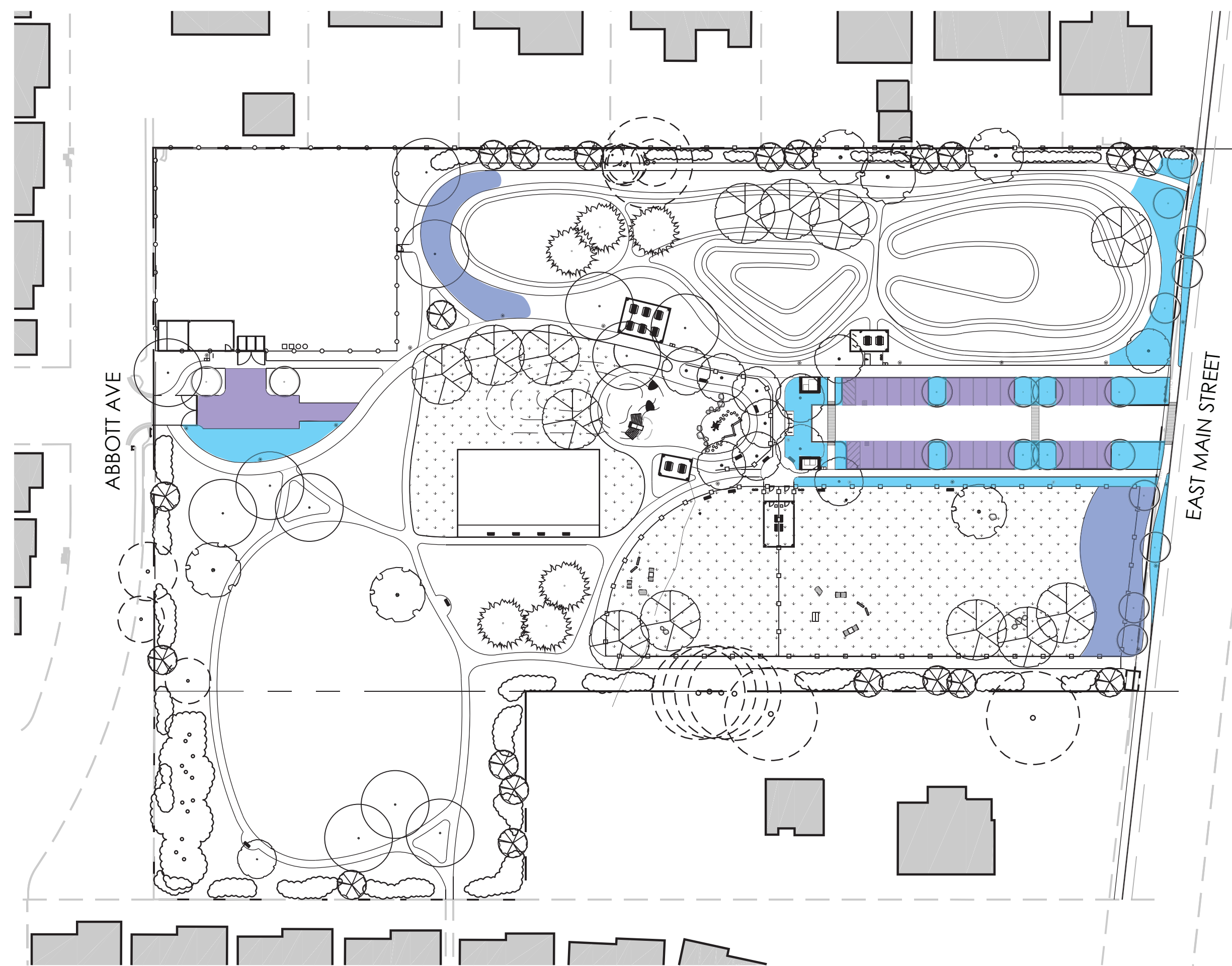
EAST MAIN STREET PARK  
2228/2290 EAST MAIN STREET  
ASHLAND, OREGON 97520

PLANTING IMAGERY

SCHEMATIC  
DESIGN

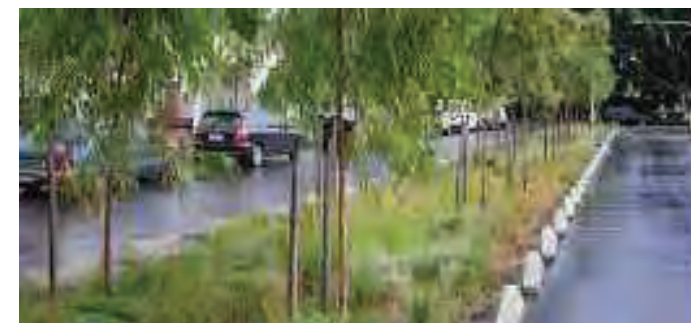
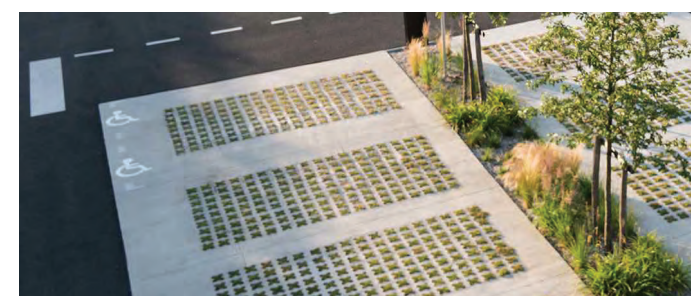
L3.0

PROJECT NO. 2102  
APRIL 19, 2022  
TEAM: PVC, CG, EG



### STORMWATER MANAGEMENT STRATEGIES

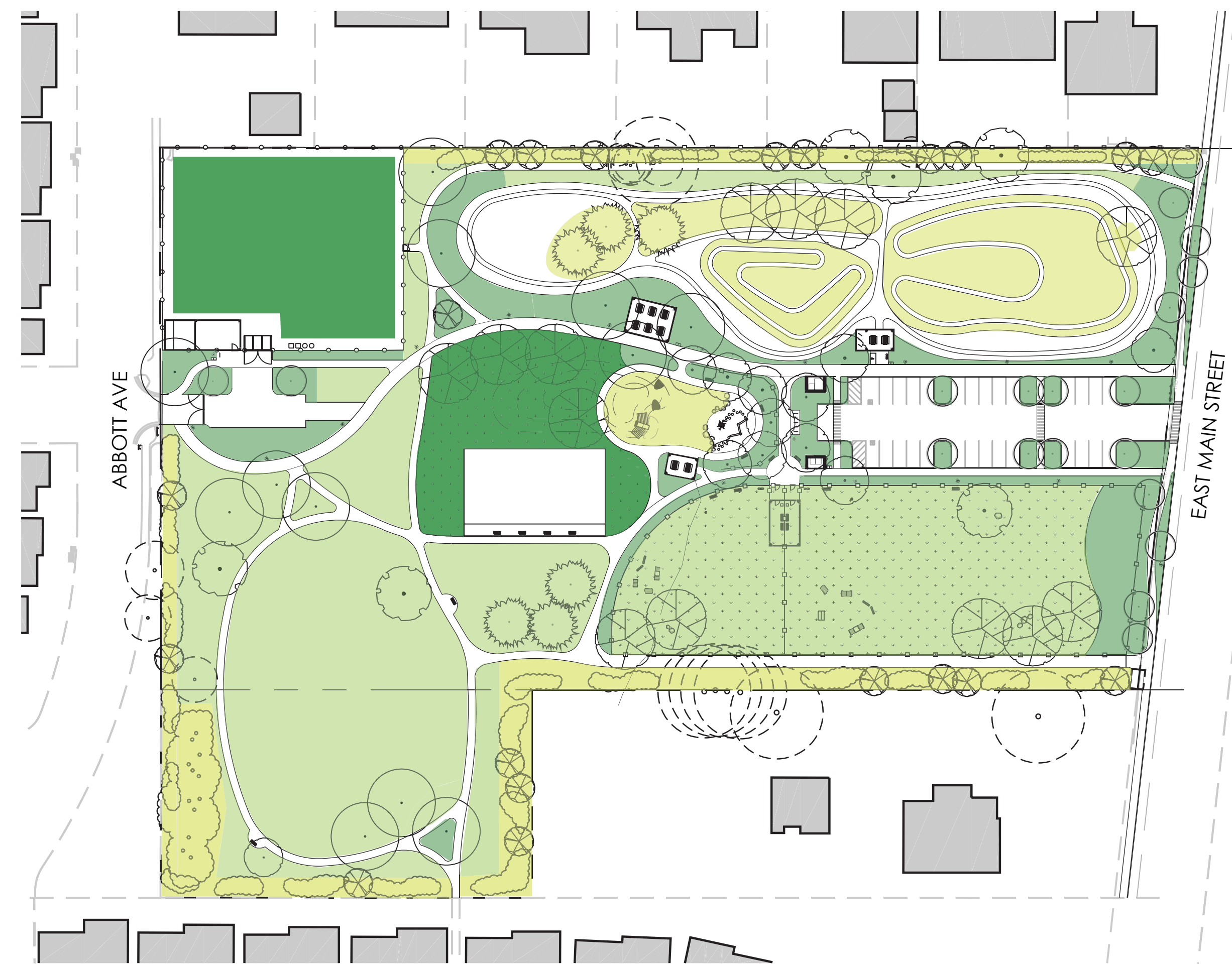
- PERMEABLE PAVING**
  - Permeable pavers in parking stalls
  - Permeable gravel in community garden parking lot
  - Filters stormwater from parking lot
- BIOSWALES**
  - Primary stormwater detention areas
  - Collect and treat water from parking lots
- RAIN GARDENS**
  - Secondary stormwater detention
  - Integrated into the landscape to allow greater infiltration throughout the site



### SUSTAINABLE APPROACH

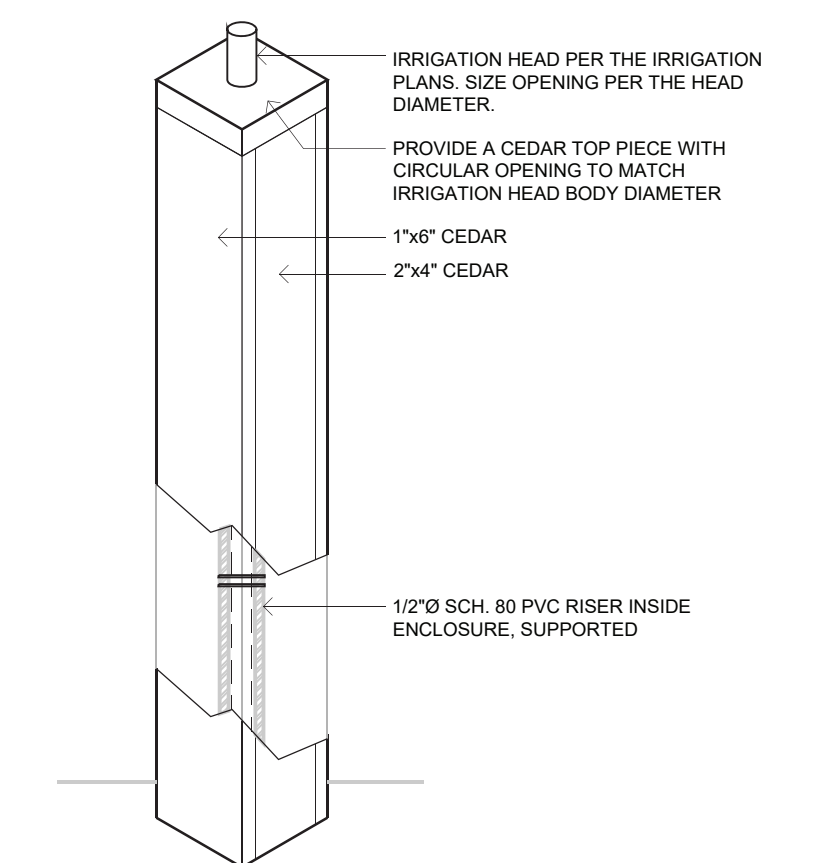
Water conservation, climate responsiveness, and ease of maintenance are integral parts of the overall landscape theme.

From materials selection to maintenance practices, this park setting provides a variety of opportunities for an innovative approach to managing the site and its resources. The park may also serve as a demonstration project, to test the effectiveness of these solutions over time, and change and adapt as a living system that includes the people who use and maintain it.



### WATER USE / MAINTENANCE LEVELS

- NO WATER USE / VERY LOW MAINTENANCE**
  - Artificial turf eliminates irrigation needs
  - Existing established trees
  - Trees & shrubs require no irrigation once established
  - Infrequent maintenance such as tree pruning
- LOW WATER USE / LOW MAINTENANCE**
  - Plant with custom seed mix (orchard/pasture grass/clover or similar)
  - Minimal irrigation to keep pest plants at bay (estimated every 2-3 weeks in summer heat)
  - Maintenance may include weeding & other Integrated Pest Management strategies
  - Maintenance may include mowing (estimated 2-3 times/yr) & IPM strategies
- LOW WATER USE / MODERATE MAINTENANCE**
  - Drought-tolerant plants
  - Minimal irrigation
  - Maintenance may include weeding & other Integrated Pest Management (IPM) strategies
- MODERATE-HIGH WATER USE / MODERATE MAINTENANCE**
  - Community gardens & edible planting
  - Mowed lawn
  - Regular irrigation needed
  - Maintenance is primarily executed by the gardening community



MEADOW SHALL BE IRRIGATED WITH ROTOR TYPE HEADS ON RISERS, WITH WOOD ENCLOSURES TO SUPPORT AND PROTECT THE SYSTEM. SEE SCHEMATIC DETAIL ABOVE.

MEADOW IRRIGATION DETAIL



EAST MAIN STREET PARK  
2228/2290 EAST MAIN STREET  
ASHLAND, OREGON 97520

SUSTAINABLE APPROACH  
DIAGRAMS  
SCHEMATIC  
DESIGN

L4.0

PROJECT NO. 2102  
APRIL 19, 2022  
TEAM: PVC, CG, EG