

City

SOURCE

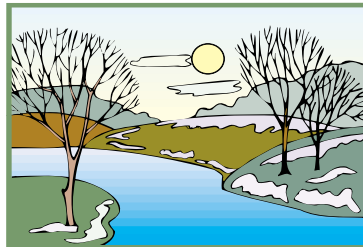
THE CITIZEN'S SOURCE OF INFORMATION ABOUT THE CITY OF ASHLAND

Sign-Up for the Fire and Forest e-Newsletter!

Ashland Fire and Rescue sends out a quarterly e-newsletter discussing topics related to wildfire home safety, evacuation, City forestland management, and wildfire related issues in our watershed. To become a recipient of the newsletter, send an email to chamberc@ashland.or.us or call Chris Chambers at 552-2066. To read back issues of the e-newsletter, go to www.ashland.or.us/firenewsletter

Arbor Day-2008

“Arbor Day is not like other holidays. Each of those reposes on the past, while Arbor Day proposes for the future.” J. Sterling Morton



National Arbor Day is the last

Friday in April. This year that is April 25. The State of Oregon celebrates Arbor Week during the first full week in April, April 7th — 11th. The City of Ashland Tree Commission has a number of events planned during April to celebrate Arbor Week and Ashland's designation as a Tree City USA. These include the Mayor's proclamation, Oregon Department of Forestry's presentation of Ashland's Tree City USA plaque, a tree planting ceremony, (See *Arbor Day 2008*, Back Page)

Boards and Commissions

More than 200 people participate on one of the 22 different committees commissions and boards for the City of Ashland. All are invaluable to the city council and to the citizens of Ashland.

The City Council relies on these groups to research issues and then to recommend specific actions. These groups attend monthly public meetings, solicit public comment and then shape their recommendation for the City Council based on the input gathered.

If you are interested in volunteering on a city board or commission, please send a letter of application with a resume (if available) to the City Recorder's office, 20 East Main Street, Ashland. A list of available vacancies is listed on the city's web site at www.ashland.or.us, and posted on the notice board at City Hall.

A calendar of board/commission/committee meetings is posted on the city's web site. For further information on city council meetings, or any commission meeting, please call City Hall at 488-6002. ▼



City SOURCE

Earth Day 2008 “Growing our Common Ground”

Saturday, April 19 at ScienceWorks Museum. All ages are invited to the Rogue Valley Earth Day celebration at the grounds of ScienceWorks Hands-on Museum in Ashland. Sponsored in part by the City of Ashland, this annual community festival offers hours of family friendly fun including over 75 exhibits, live music and dance, Art Now “Trashion Show,” kids games and crafts, and much more. Earth-friendly snacks from local vendors will be for sale, and a free RVTD shuttle will circulate

through the City to provide transportation to the event. For more information, entertainment schedule and the shuttle route, visit

www.RogueValleyEarthDay.net or call 488-6606. ▼

Spring Cleaning

Tree branches and bushes that extend onto city streets and sidewalks pose hazards for pedestrians, bicyclists and vehicles. Larger vehicles such as delivery trucks, street sweepers and RVs can sustain damage when coming into contact with tree branches — and trees can sustain damage if branches are broken.

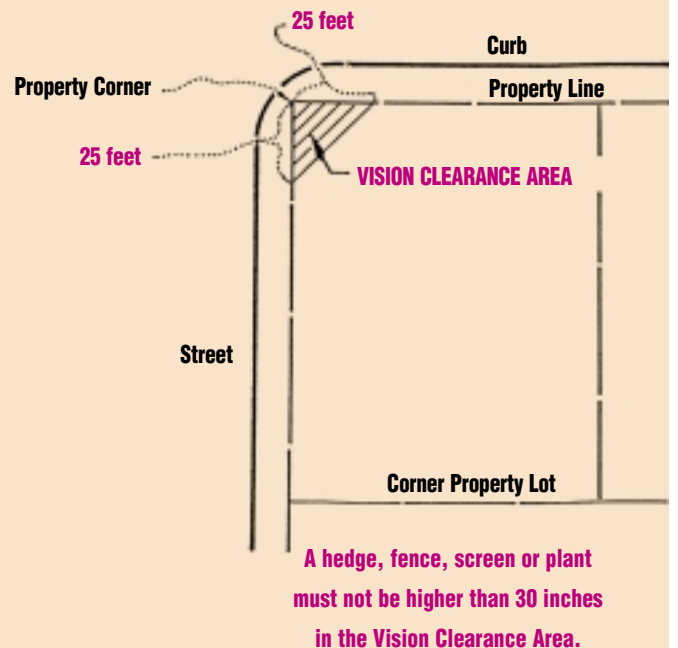
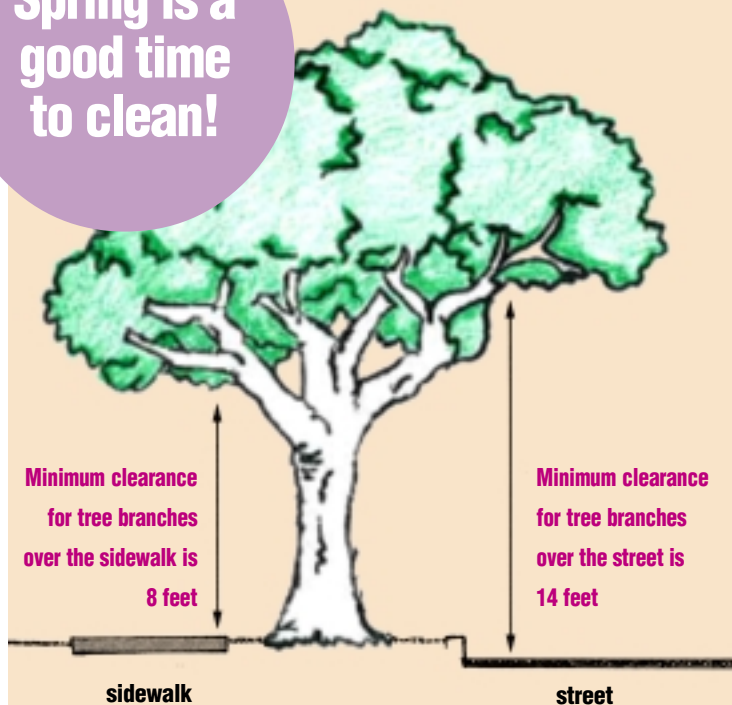
Property owners are responsible for trimming trees or bushes adjacent to the street and their property. This includes the park row area between the sidewalk and the curb.

To determine if your trees need trimming, stand on the curb line in front of your home, look up and see if there are any branches extending beyond the curb into the street under 14 feet or 8 feet over sidewalks. If so, these branches should be trimmed back to the curb line.

Bushes and shrubs should also be trimmed to allow passengers to easily exit a parked car and to allow pedestrians the full width of the sidewalk.

Please call Dean Walker 552-2424 for more information. ▼

Spring is a good time to clean!



CERT Training

The CERT program has trained hundreds of local citizens in all-hazards emergency response. The next training begins April 25—April 26 and on May 2 — 3. Sign up at the Fire Station, 455 Siskiyou Blvd. Next Basic Training for Ashland's Community. Both weekends are required to complete the all-hazards emergency training. Check the CERT website for the full schedule: www.ashlandcert.org. for more information contact Lucy Edwards or Heidi Gottlieb City of Ashland at 552-2226cert@ashland.or.us

Ashland Police Department Area Command Program

The program is designed to enhance current community oriented policing methods by allowing line level officers more time and greater flexibility in concentrating on community related problems.

Ashland has been divided into 4 geographic areas with a Neighborhood Officer assigned to each area. The Neighborhood Officer is the first line of contact for residents of that particular area. The goal is to provide a partnership between Law Enforcement, the Community and other community agencies and resources.

The Neighborhood Officers will hold quarterly community meetings

in each area and residents will be invited to attend and discuss issues. They will also meet monthly with each other to discuss problems, brainstorm solutions and update staff on neighborhood issues.

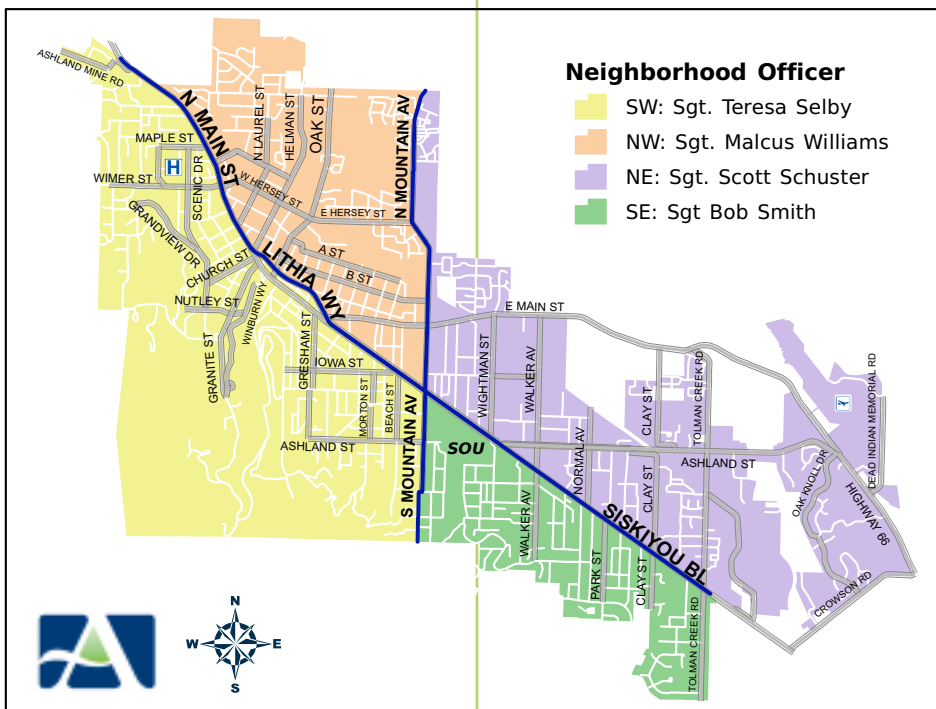
The four areas are:

1) south of North Main Street, south of Lithia Way, south of Siskiyou Boulevard and west of Mountain Avenue. — Sgt. Teresa Selby 552-2120

2) south of Siskiyou Boulevard and east of North Mountain Avenue. — Sgt. Bob Smith 552-2127

3) north of North Main, north of Lithia Way, north of Siskiyou Boulevard and west of Mountain Avenue. — Sgt. Malcus Williams 552-2142

4) south of Siskiyou and east of Mountain Avenue. — Sgt. Scott Schuster 552-2114 ▼



New Passport Applications

The Department of State has issued new applications for both new passports and passport renewals. The updated forms are available at the City Recorder's Office or can be downloaded at www.travel.state.gov

The City Recorder's Office accepts passport applications every THURSDAY, from 9:00 a.m. to 3:30 p.m. (Closed from 12-1 for the lunch hour). For additional information regarding passport services, please contact the City Recorder's Office at (541) 488-5307. ▼

New Passport Fees

Please be advised that as of February 1, 2008, the cost of applying for a United States Passport Book has been changed to the following:

❑ **Adults:**

\$75.00 Passport Fee

Payment Methods: Check or Money Order Only.

\$25.00 Execution Fee*

Payment Methods: Check, Money Order or Cash Only.

Total Cost: \$100.00

❑ **Minors (15 & Under):**

\$60.00 Passport Fee

Payment Methods: Check or Money Order Only.

\$25.00 Execution Fee*

Payment Methods: Check, Money Order or Cash Only

Total Cost: \$85.00

*Execution Fee is only applicable to DS-11 applications. ▼

Arbor Day 2008

Continued from Page 1

placement of the Tree of the Year plaque for the Silver Maple located at 130 Helman Street, and an informative Tree Commission booth at the Annual Earth Day festival held at the Science Works Museum.

For more information about the Arbor Day activities planned during the month of April to celebrate Arbor Week please visit the City of Ashland web page, www.ashland.or.us. ▼

CITY OF ASHLAND City Calendar

- ❑ **City Council** meets on the first and third Tuesdays at 7:00 p.m. Study sessions occur on the day before at 5:15 p.m.
- ❑ **Planning Commission** meets on the second Tuesday 7:00 p.m. Study sessions occur on the fourth Tuesday at 7:00 p.m.
- ❑ **Airport Commission** meets on the first Tuesday at 9:30 a.m.
- ❑ **Bicycle and Pedestrian Commission** meets on the third Thursday at 5:15 p.m.
- ❑ **Conservation Commission** meets on the fourth Wednesday at 7:00 p.m.
- ❑ **Forest Lands Commission** meets on the second Tuesday at 5:30 p.m.
- ❑ **Historic Commission** meets on the first Wednesday at 7:00 p.m. (the Wednesday prior to the Tuesday Planning Commission)
- ❑ **Housing Commission** meets on the fourth Thursday at 5:30 p.m.
- ❑ **Parks and Recreation Commission** meets on the fourth Monday at 7:00 p.m. Study session occurs on the third Monday.
- ❑ **Public Art Commission** meets on the third Friday at 8:15 a.m.
- ❑ **Traffic Safety Commission** meets on fourth Thursday at 7:00 p.m.
- ❑ **Tree Commission** meets on the Thursday before the Tuesday Planning Commission Meeting

◆ Many of the above meetings are cablecast live on channel 9 and replayed on channel 30. ◆ Meetings are held at Council Chambers, 1175 East Main or at 51 Winburn Way. ◆ For information about all City meetings please call City Administration at 488-6002. ◆ Back issues of the City Source are posted under "Documents" on the City's Website, www.ashland.or.us. ◆ TTY 1-800-735-2900

