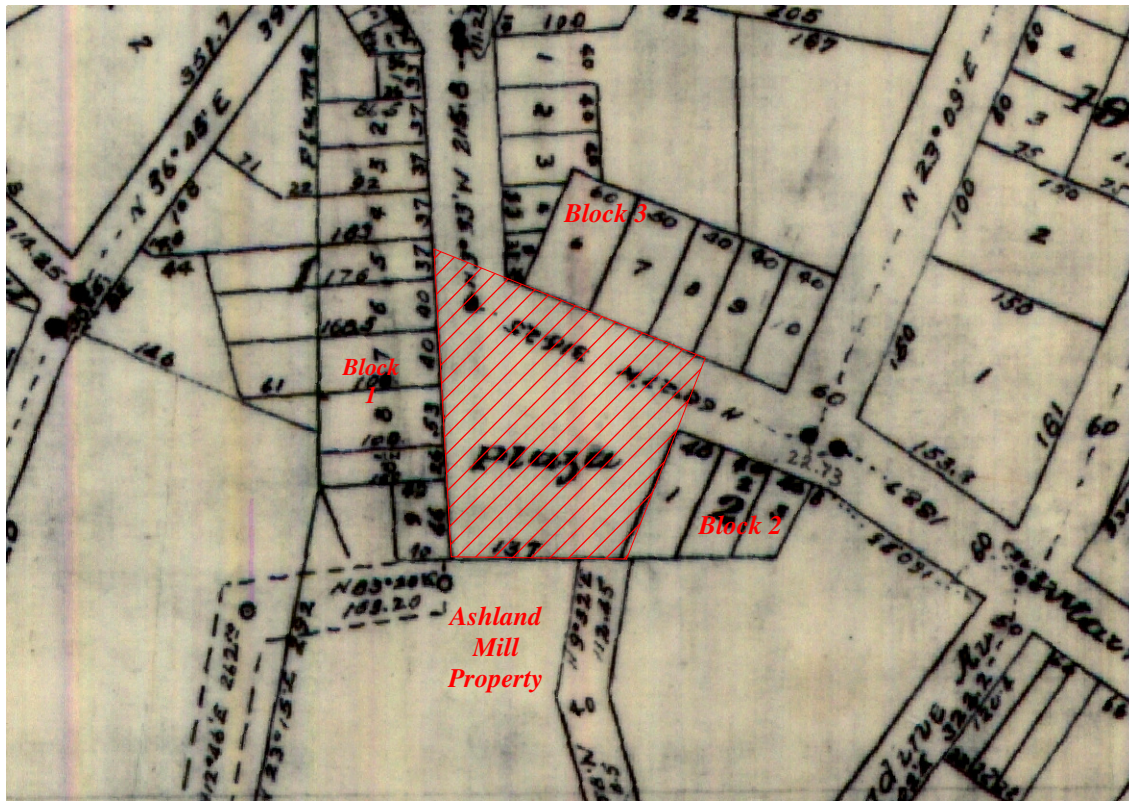
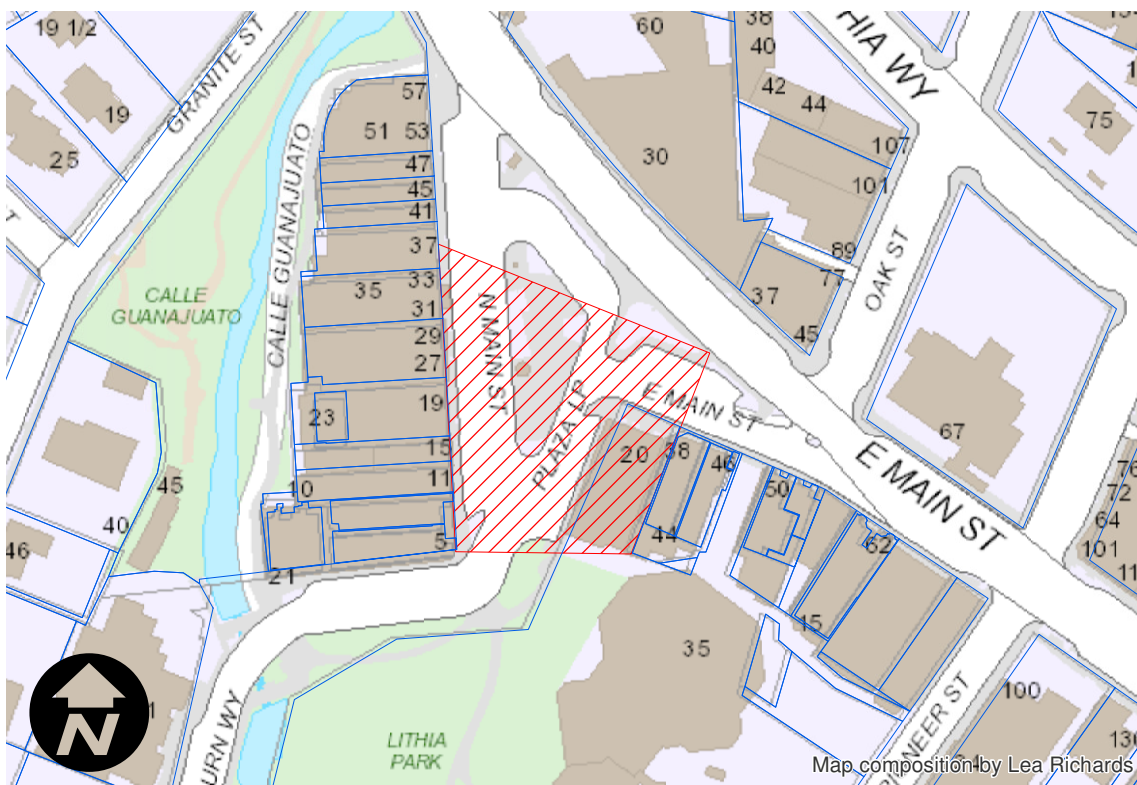


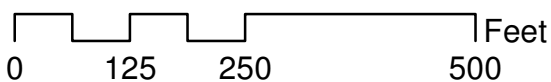
The following graphics superimpose the legal description from the 1884 deed (Helman to the Town of Ashland) over the 1888 survey of Ashland and over the present-day Ashland tax lot map. **Dimensions are approximate.** These graphics liberally interpretation that legal description, because it is unclear if the pre-existing, 60-wide Main Street was intended to be in the conveyance.





1888 city map, including city blocks 1, 2, 3, and Ashland Mill Property



Modern city map, including current tax lots and overlay of original Helman donation



Legend

-  Taxlots
-  Helman Deed 1884

