

SAMPLE FIRE EMERGENCY GUIDE

123-127 My Street

This guide has been prepared to let you know of the fire safety features of your building.

In the event of a fire emergency inside,

- Leave your apartment immediately
- Call 9-1-1
- Once outside, go to the designate meeting place
- Do not return to the building until the fire department has said it is safe to re-enter.

Your apartment building is equipped with fire safety equipment and tools which will help to protect you.

Smoke Alarms

Each unit is equipped with a smoke alarm in each bedroom and one in the hall. The smoke alarms are powered by electricity and have a battery backup in the event of a power failure. The smoke alarm has a hush feature. This will allow you to silence it in the event something other than a fire causes the alarm to sound.

(Alternate language for apartments that have solely battery powered smoke alarms - Each unit is equipped with a smoke alarm in each bedroom and one in the hall. The smoke alarms are solely powered by battery and have been equipped with a 10-year battery. The smoke alarm has a hush feature. This will allow you to silence it in the event something other than a fire causes the alarm to sound.)

In order to make sure the smoke alarm works when it is needed, please do the following:

- Test the smoke alarm monthly
- Change the smoke alarm annually
- Never remove or disable the smoke alarm

Carbon Monoxide Alarms *(only required when there is a carbon monoxide source)*

Each unit is equipped with a carbon monoxide alarm within 5 feet from each bedroom. The carbon monoxide alarm will sound when there is a level of carbon monoxide that is dangerous. Carbon monoxide is a clear and odorless gas that is toxic and can be created from incomplete combustion of natural gas, propane, or vehicle exhaust. Carbon monoxide can kill you.

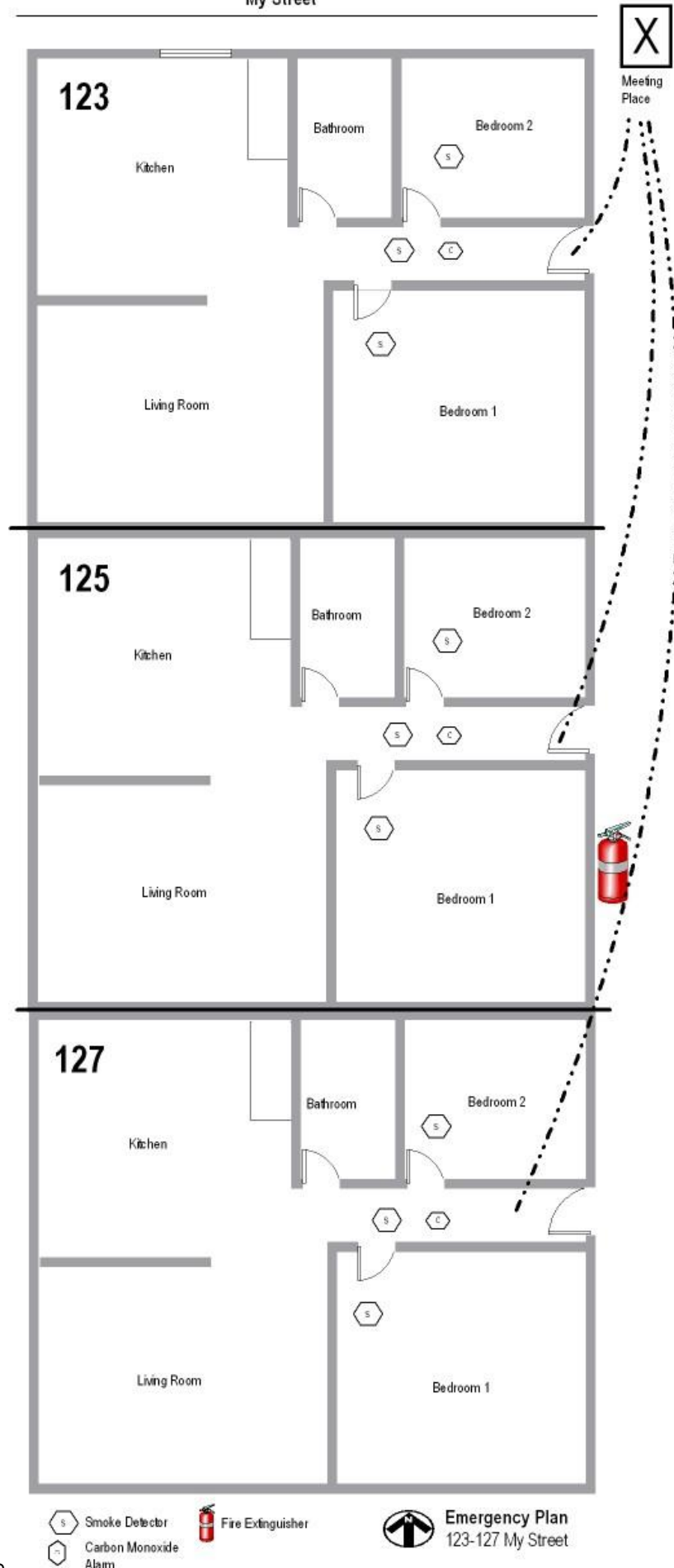
If your carbon monoxide alarm sounds, please do the following:

- Press the test or reset button on the alarm.
- If the alarm continues to sound
 - Evacuate everyone from your apartment
 - Call 9-1-1
 - Follow the recommendations of the firefighters
- Contact the natural gas company if a natural gas appliances is the possible problem.

Portable Fire Extinguishers

Fire extinguishers are located on the exterior of building and in the laundry. These extinguishers can be used by residents to put out a fire if safe to do so. Please familiarize yourself with where the fire extinguishers are in the event that you need to use one. You will see them located on the emergency evacuation plan diagram.

My Street



Smoke Detector



Carbon Monoxide Alarm



Fire Extinguisher



Emergency Plan
123-127 My Street