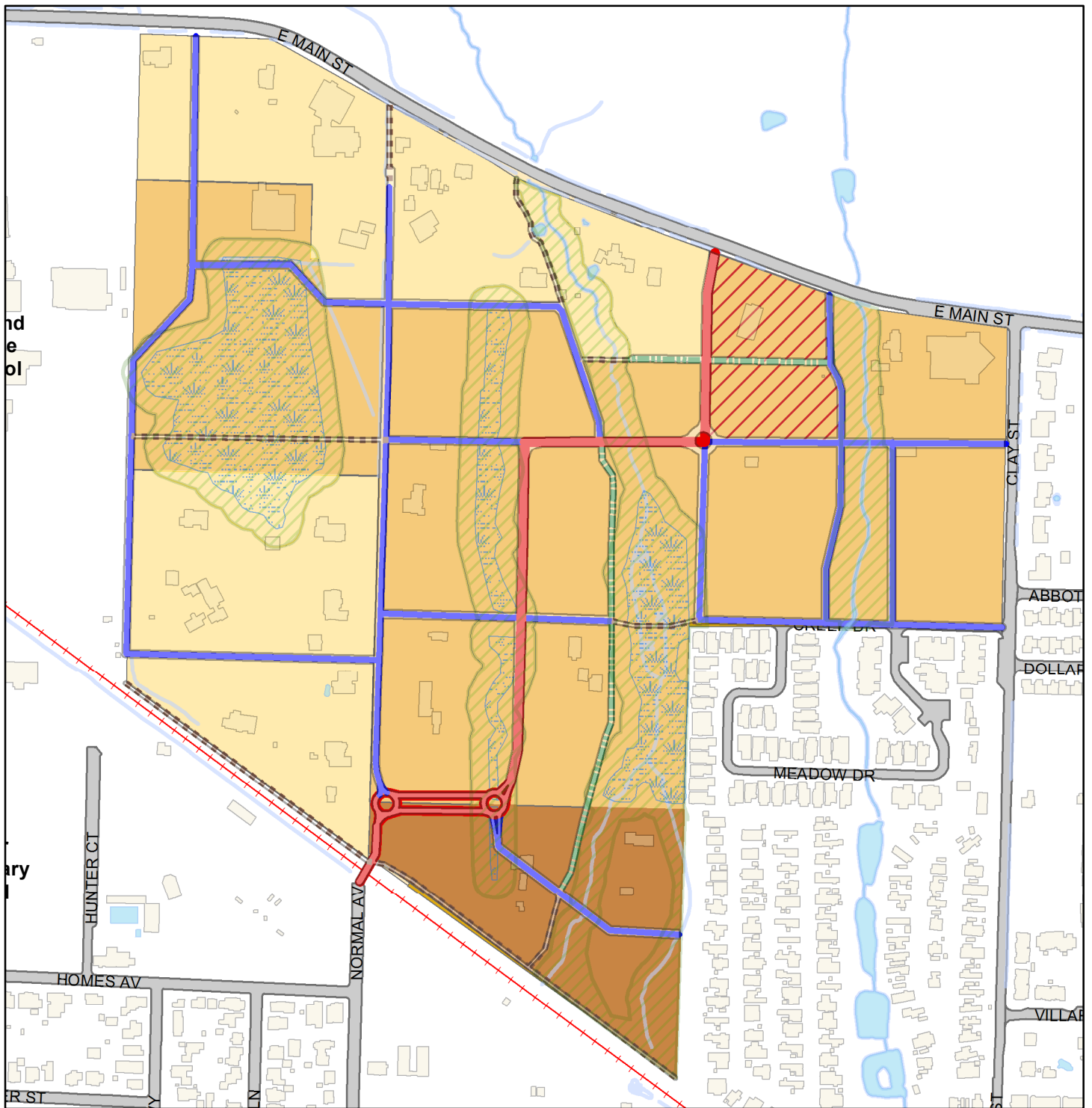








CITY OF ASHLAND



Normal Neighborhood Plan Working Group Alternative Discussion Draft

Zone

	NN-1-5		Openspace Area
	NN-1-3.5		significant wetlands (2007 LWI)
	NN-1-3.5-C		
	NN-2		

Street Types

	collector
	path
	street
	shared street



9/04/2014