

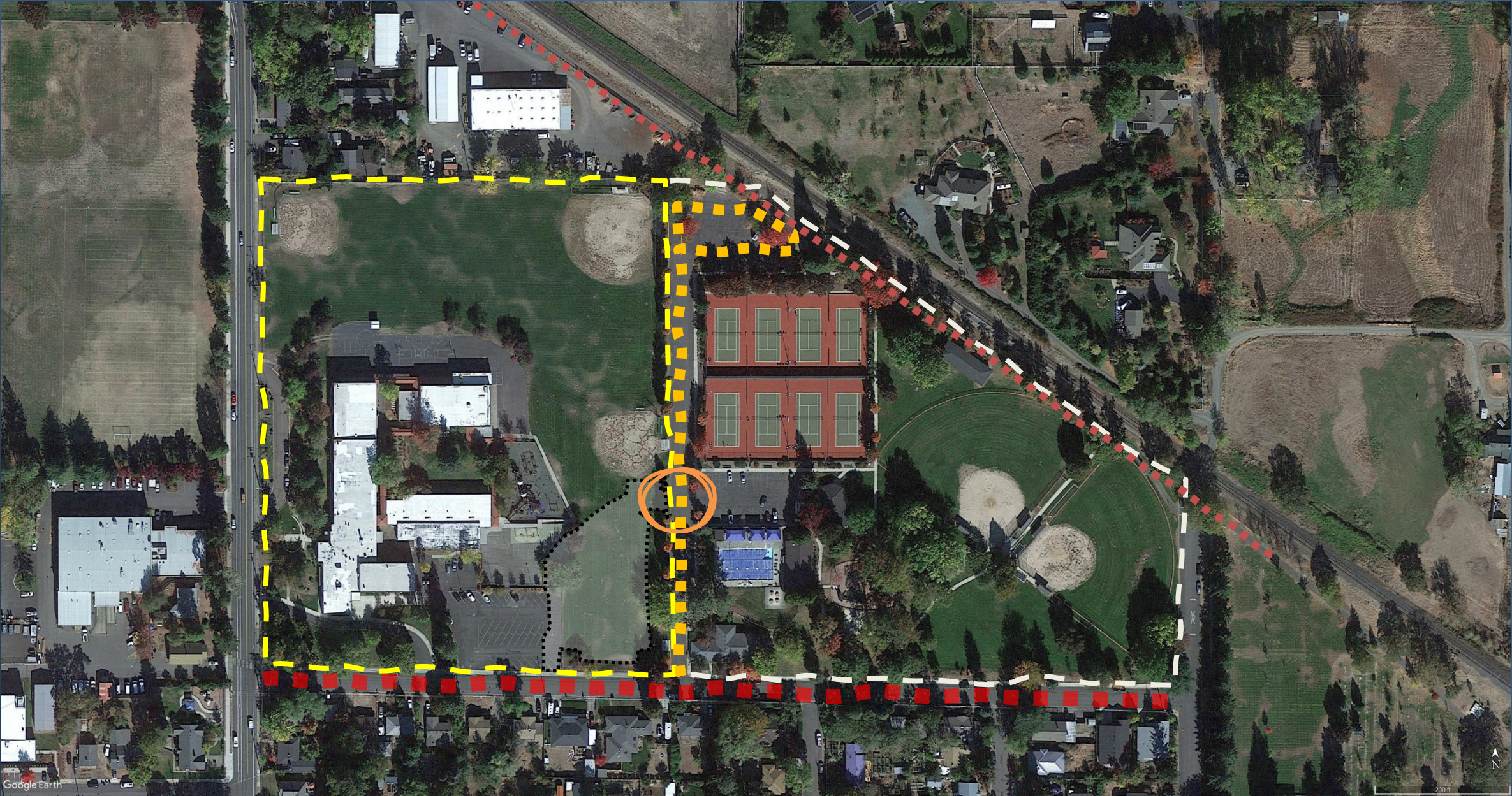
ASHLAND PARKS and RECREATION COMMISSION

Walker School Request to Access Hunter Court

June 9, 2021

Michael A. Black, AICP





Walker School Request

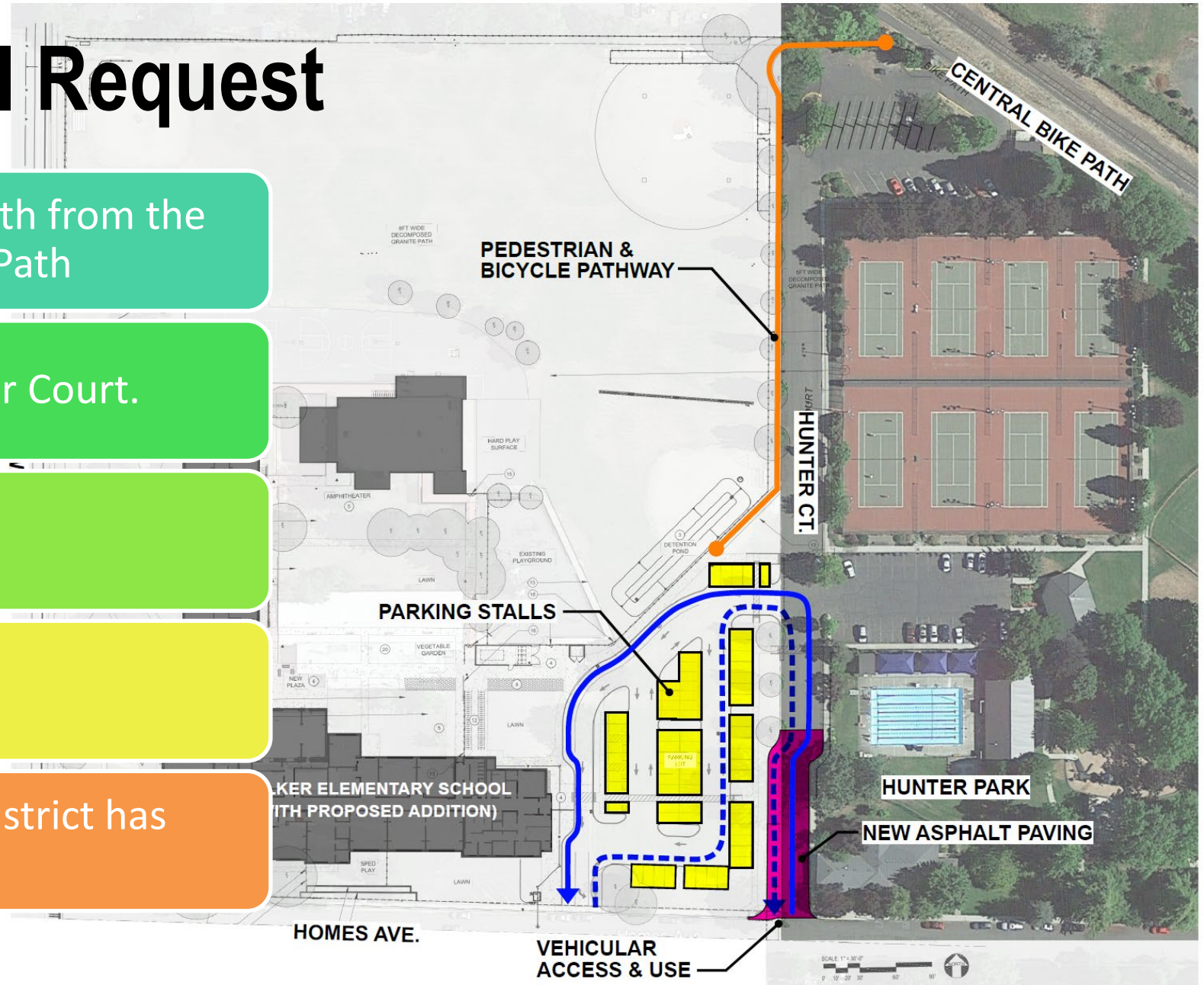
Extension of a bike/ped path from the school to the Central Bike Path

Traffic mitigation on Hunter Court.

Cross Parking Agreement.

Cross Access Agreement.

Storm Drain Access. The District has withdrawn this request.



Recommendation for Joint APRC/ASD Agreement

- The School District will permit patrons of City parks facilities to use for vehicular parking purposes, the parking area associated with Walker Elementary, as designated on attached Ex. A. Such parks-related use may occur during hours when school is not in session (before 7:00 am and after 4:30 pm, Monday through Friday and all day Saturday and Sunday)) and when there is not an organized Walker Elementary activity, such as Back- to-School Night or school events. The School District shall provide its normal maintenance to this parking area at District expense.
- APRC shall permit School District bicycle and vehicular and equipment-related use of Hunter Ct. in the locale designated on attached Ex. B, for District-related purposes. Such uses shall be in coordination with other users of Hunter Ct. APRC shall provide its normal maintenance to this area of Hunter Ct. at Commission expense.
- The School District shall install at its expense, a 5 foot wide minimum, granite pedestrian and bicycle pathway, adjacent to Hunter Ct. in the location and according to the design shown on attached Ex. C. Such pathway shall be completed not later than 18 months after final approval of the pending Walker Elementary School land use application (City File No. PA-T2-2021-00028) is granted.
- The School District will at its expense, further widen Hunter Ct. by installing a turn lane that extends from Homes Avenue to beyond the current senior center street parking, as designated on attached Exhibit D. Further, the School District will at its expense replace the existing asphalt from curb to curb for the entirety of the length of the aforementioned turn lane. APRC will support the required removal of trees on the School District property for the purpose of installing the aforementioned turn lane.
- The parties agree to implement and support any other actions necessary to carry out the above agreements.