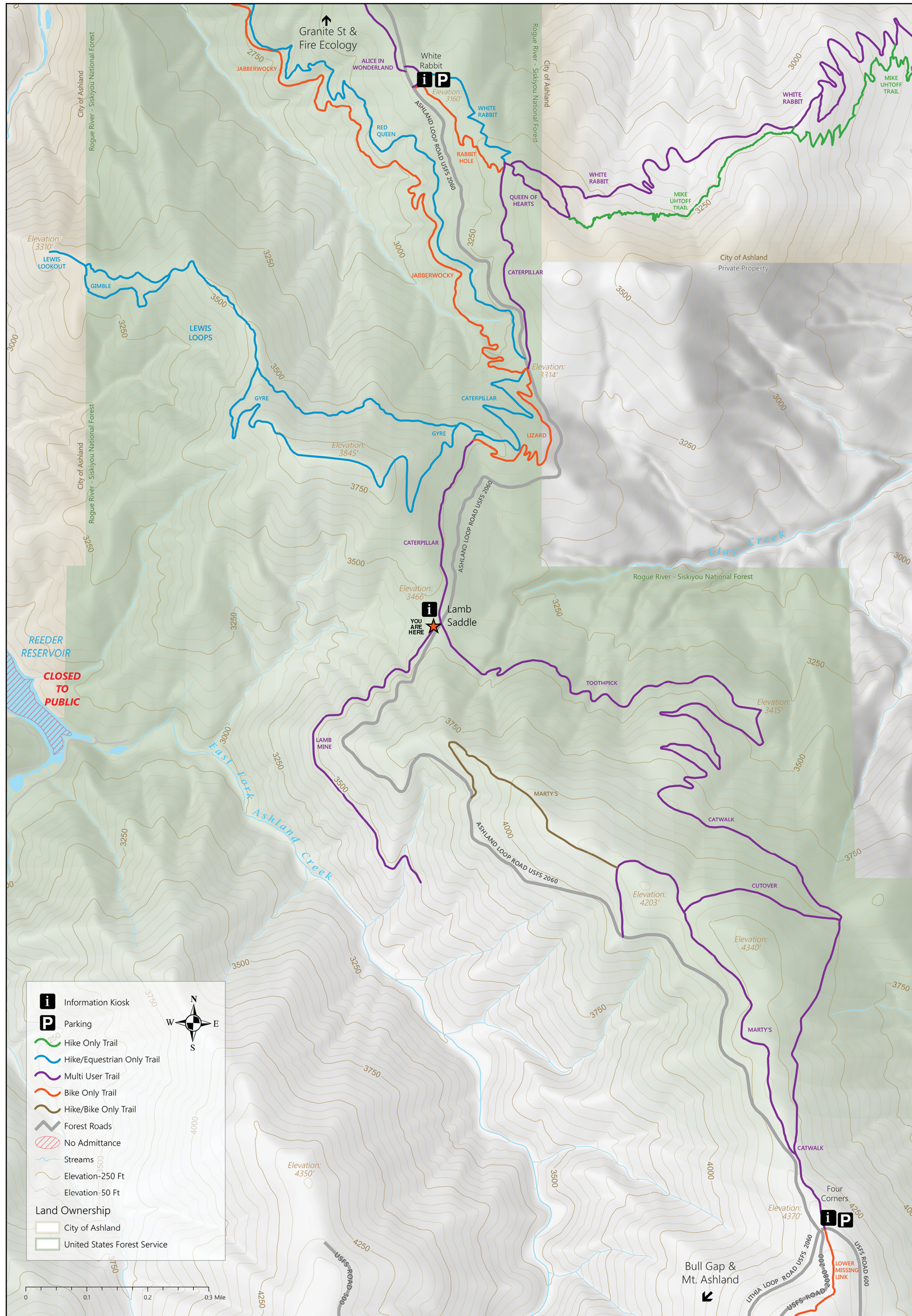


Welcome to the Lamb Saddle Trailhead



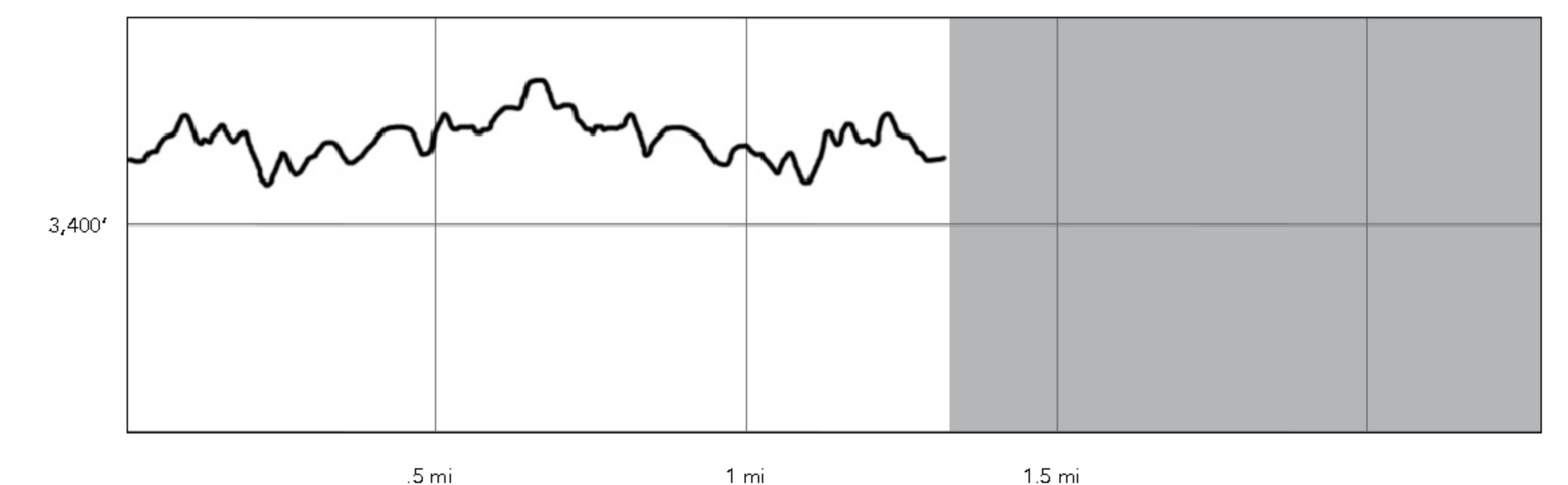
Lamb Mine Trail

An easy trail to an old gold mine.

- From the trailhead, follow portions of an old mining ditch. Built in the early 1900s, the ditch was designed to bring water from Ashland Creek to power an ore-crushing mill located on upper Tolman Creek Road. The ditch trail passes by one of the old "adits" (tunnels with one entrance) of the Lamb Mine, excavated into the granite slope in search of gold.

Please don't enter the adit — it is **DANGEROUS** due to the potential for collapse! Relics from historic mining ventures are visible along the way. Also, enjoy Trilliums, tiger lilies, asters and scarlet gilia in early spring to mid-summer. The trail ends at a scenic viewpoint overlooking Reeder Reservoir and the Ashland Watershed.

NOTE: Although the trail may appear to continue, this is not an official route. Please respect the end of the trail!



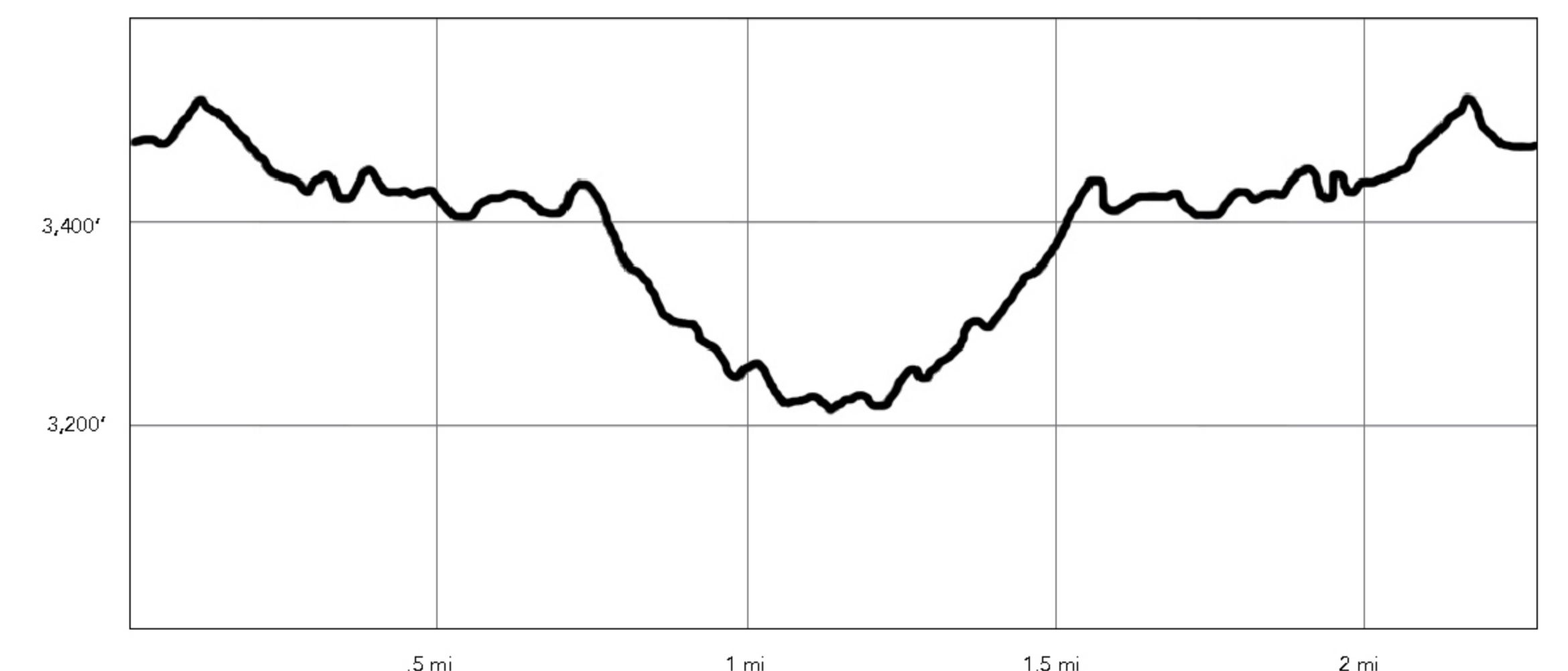
Begin at kiosk - Lamb Mine trail Out & back, 1.3 miles total ~480' gain/loss



Toothpick Trail

A shady, winding trail with views of Grizzly Peak.

- From the kiosk, head across the road (east) to join the Toothpick trail, originally an unnamed path adjacent to the Lamb Mine Ditch, out to Tolman Creek Road. Visitors are rewarded with views of Grizzly Peak. The trail may have acquired the name "Toothpick" from the numerous small-diameter Douglas-firs that grew near the trail. The trees were so densely packed, one could hardly walk through them.



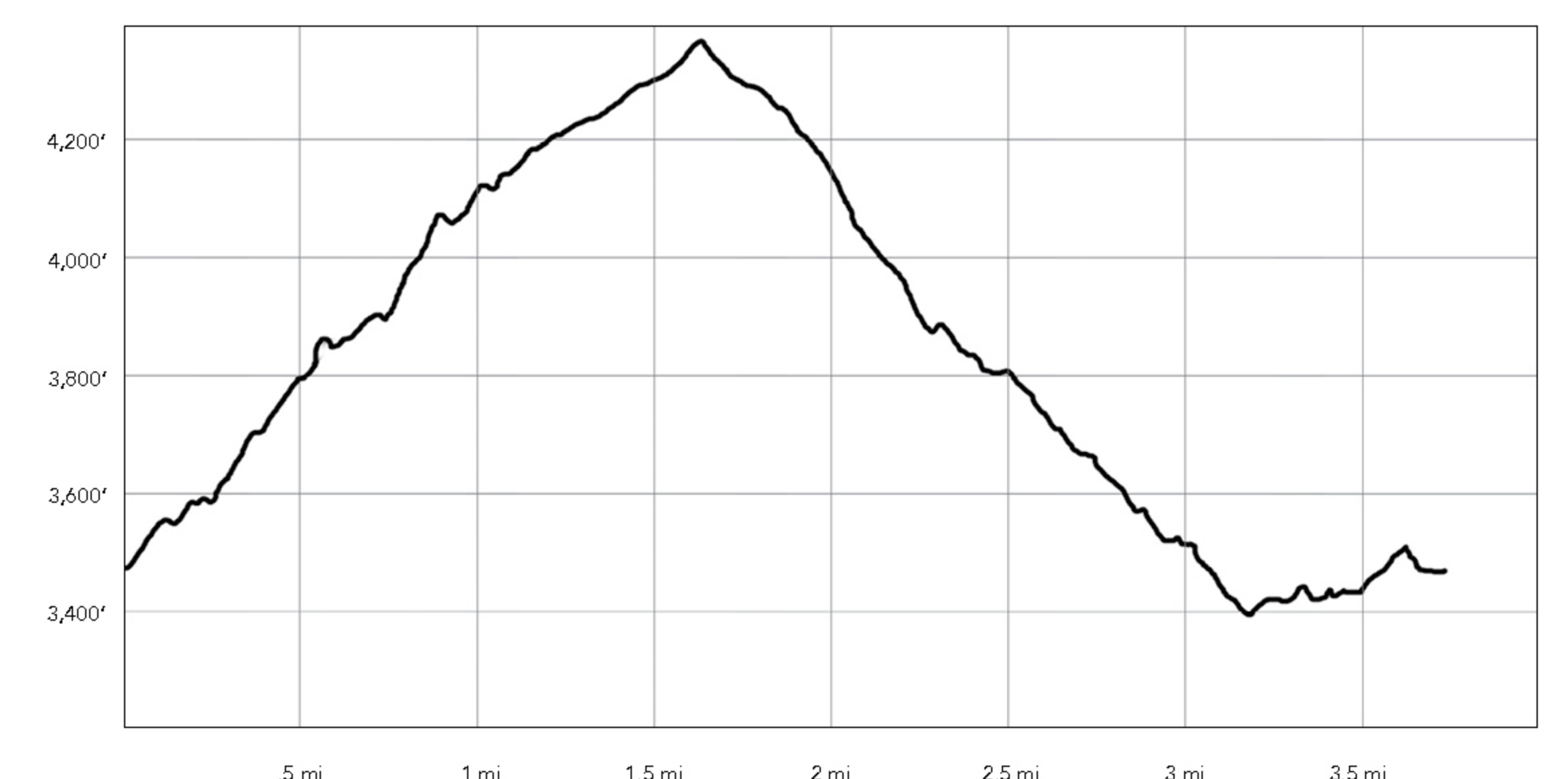
Begin across road from kiosk Out & back, 2.25 miles total ~735' gain/loss



FS Rd 2060 - Catwalk - Toothpick

A short, steep ascent provides a fast, fun descent.

- From the kiosk, travel south (uphill) on FS Rd 2060 for a 1.6-mile steep climb to Four Corners.
- Turn left (south) onto Catwalk Trail. Initially rocky, Catwalk Trail joins an old road bed and is relatively straight and wide.
- About .20 mile down, the trail turns left and becomes single-track with more turns until it reaches Toothpick trail.
- Turn left onto Toothpick trail onto the relatively flat .5 mile back to Lamb Saddle kiosk.



FS Rd 2060 - Catwalk - Toothpick Loop, 3.75 miles total ~1,220' gain/loss