

# Council Communication

## May 19, 2015, Business Meeting

---

### **Approval of Recommendation from the Public Art Commission for Painting Electric Utility Boxes near the recycling area at North Mountain Park**

---

**FROM:**

Ann Seltzer, Management Analyst, [seltzera@ashland.or.us](mailto:seltzera@ashland.or.us)

**SUMMARY**

The Public Art Commission recommends Council approve the designs submitted by artist Ann DiSalvo to be painted on three boxes located near the recycling area in North Mountain Park. Implementation of public art requires Council approval. If approved, the artist will begin painting in the next few weeks.

**BACKGROUND AND POLICY IMPLICATIONS:**

The Public Art Commission (PAC) oversees the painting of electric utility boxes in Ashland. Requests to paint the boxes come to the PAC from a variety of sources including businesses, private property owners and the Parks and Recreation Department. The cost is \$500 per utility box. The funds are used to prep and prime each box, pay the artist, reimburse the artist for paint and after the art is created seal the box with a clear protective coating.

Staff from North Mountain Park submitted a request to have three boxes near the recycling area painted. After meeting with NMP staff and discussing the project, Ann DiSalvo was commissioned by the PAC to paint the boxes.

The suggestion to paint utility boxes was raised by citizens during the Public Art Master Plan public involvement period in 2007. In 2009 with a grant from the Jackson County Cultural Trust seven boxes were painted. Since that time eight additional boxes have been painted.

This project meets the objectives in the Public Art Master Plan by elevating citizen and visitor awareness of public art in Ashland and incorporating artistic elements into basic functional pieces.

**COUNCIL GOALS SUPPORTED**

N/A

**FISCAL IMPLICATIONS:**

The \$1,000 cost is split between the Parks and Recreation Department (\$750) and the Public Art Commission (\$250). Funds are budgeted and available.



**STAFF RECOMMENDATION AND REQUESTED ACTION:**

Staff recommends Council approve the proposed designs.

**SUGGESTED MOTIONS:**

I move approval of the Public Art Commission's recommendation of the proposed designs for the utility boxes in North Mountain Park, as submitted by Ann DiSalvo.

**ATTACHMENTS:**

Images of the artist's proposed designs.



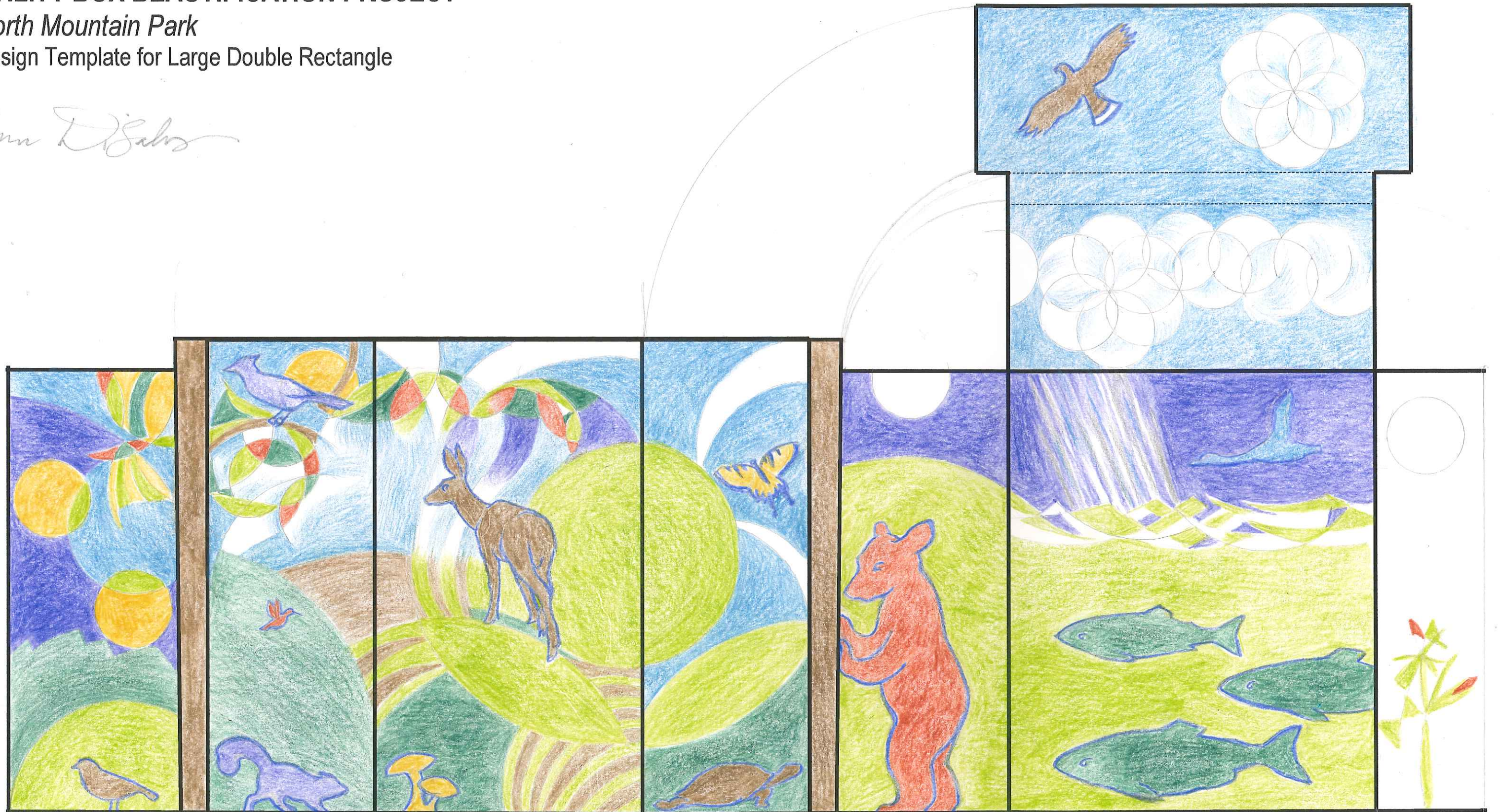


# UTILITY BOX BEAUTIFICATION PROJECT

North Mountain Park

Design Template for Large Double Rectangle

*Anna D. Galos*



← SIDE 4 →

SIDE 1: FACING TOWARD  
CONCESSION BUILDING  
← should be 4 1/2" wide →

← SIDE 2  
FACING BALLFIELD →

SIDE 3: FACING TOWARD  
BIKE PATH

*non-existent*

DIMENSIONS: 57" H X 40" W X 52" L

*Color design phase took 11 hrs.*



# UTILITY BOX BEAUTIFICATION PROJECT

North Mountain Park

Design Template for Small Rectangle

*Ann DeSalvo*

TOP sky



SIDE 1: FACING TOWARD  
BIKE PATH

SIDE 2

SIDE 3: FACING TOWARD  
CONCESSION BUILDING

SIDE 4

DIMENSIONS: 28" H X 24" W X 64" L



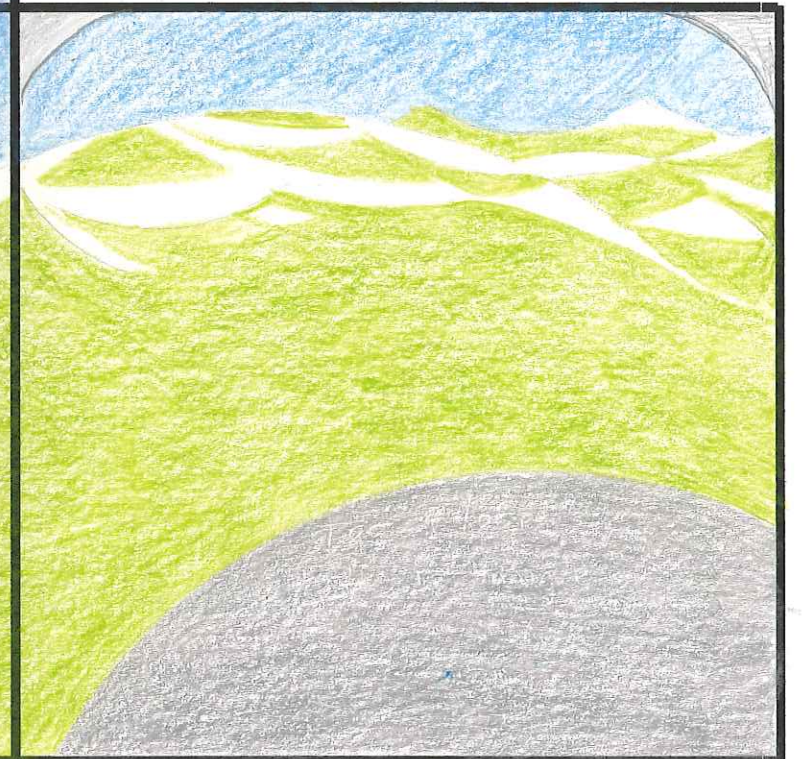
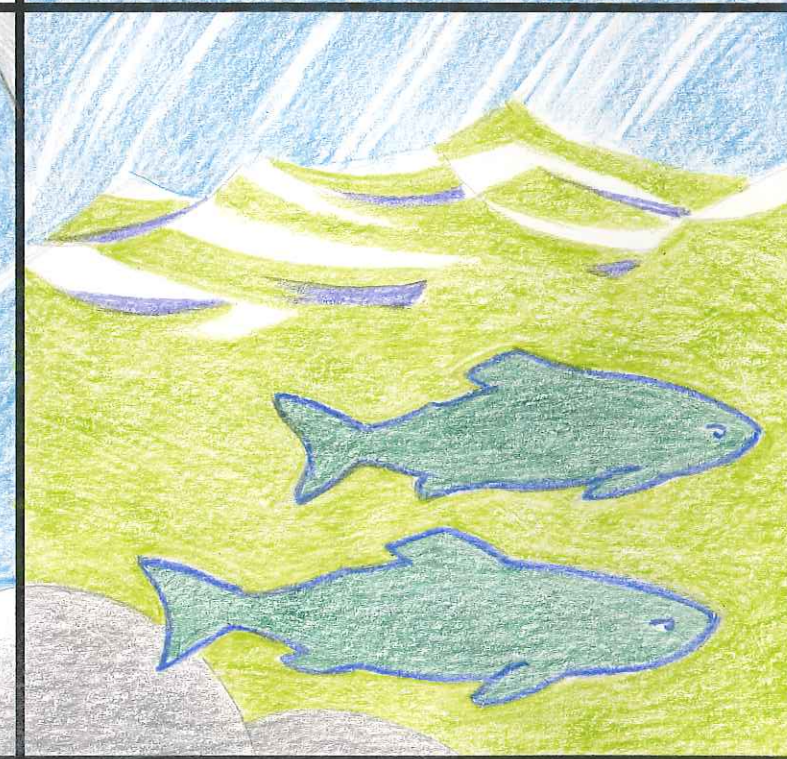
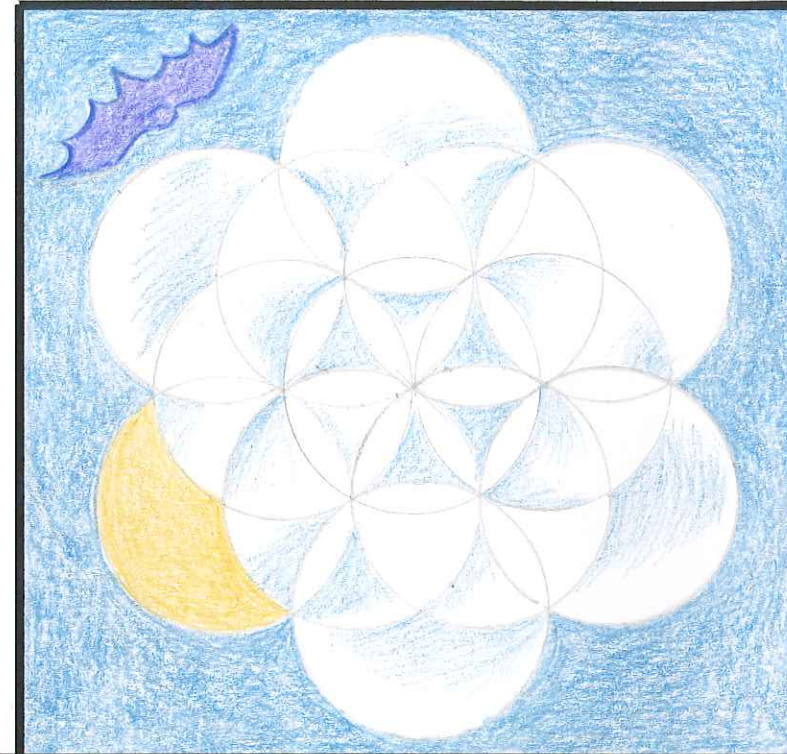
# UTILITY BOX BEAUTIFICATION PROJECT

North Mountain Park

Design Template for Square Box

*Ann D Salvo*

TOP SKY



SIDE 1: FACING TOWARD BIKE PATH

SIDE 2

SIDE 3: FACING TOWARD CONCESSION BUILDING

SIDE 4

*facing recycle station*

*fish*

*bottom blank too close to rectangle box*

*circles  
4"  
2 1/4"  
1 1/2"*

DIMENSIONS: 36" H X 36" W X 36" L



# UTILITY BOX BEAUTIFICATION PROJECT

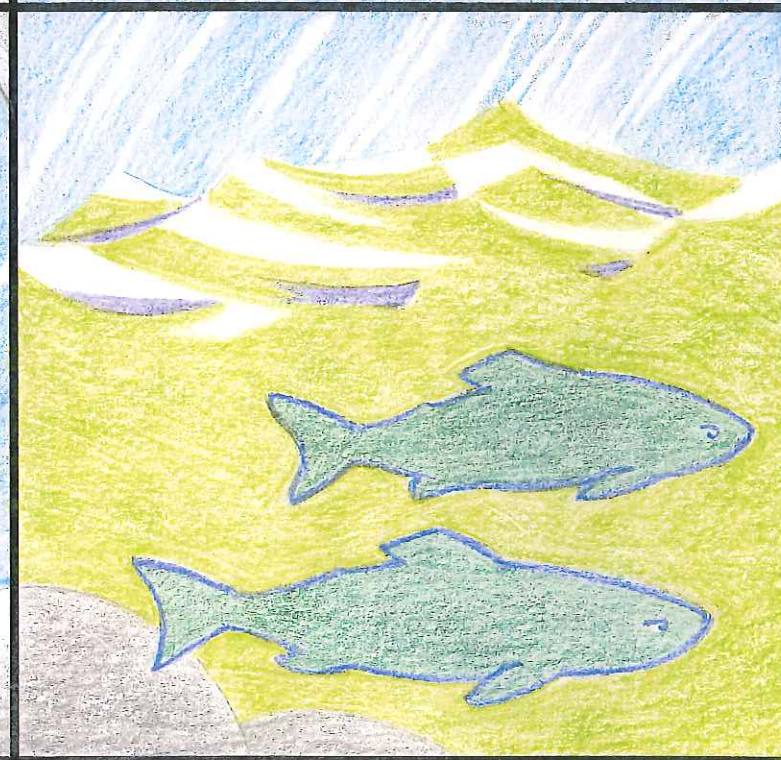
North Mountain Park

Design Template for Square Box

*Ann DeSalvo*

TOP

SKY



SIDE 1: FACING TOWARD BIKE PATH

SIDE 2

SIDE 3: FACING TOWARD CONCESSION BUILDING

SIDE 4

*fading recycle station*

*bottom blown too close to rectangle box*

*inches*  
4"  
2 3/4"  
1 1/2"  
DIMENSIONS: 36" H X 36" W X 36" L



# UTILITY BOX BEAUTIFICATION PROJECT

North Mountain Park

Design Template for Square Box

*Ann DeSalvo*

TOP

SKY



SIDE 1: FACING TOWARD BIKE PATH

SIDE 2

SIDE 3: FACING TOWARD CONCESSION BUILDING

SIDE 4

*facing recycle station*

*bottom panel too close to rectangle box*

DIMENSIONS: 36" H X 36" W X 36" L

*inches  
4"  
2 1/4"  
1 1/2"*