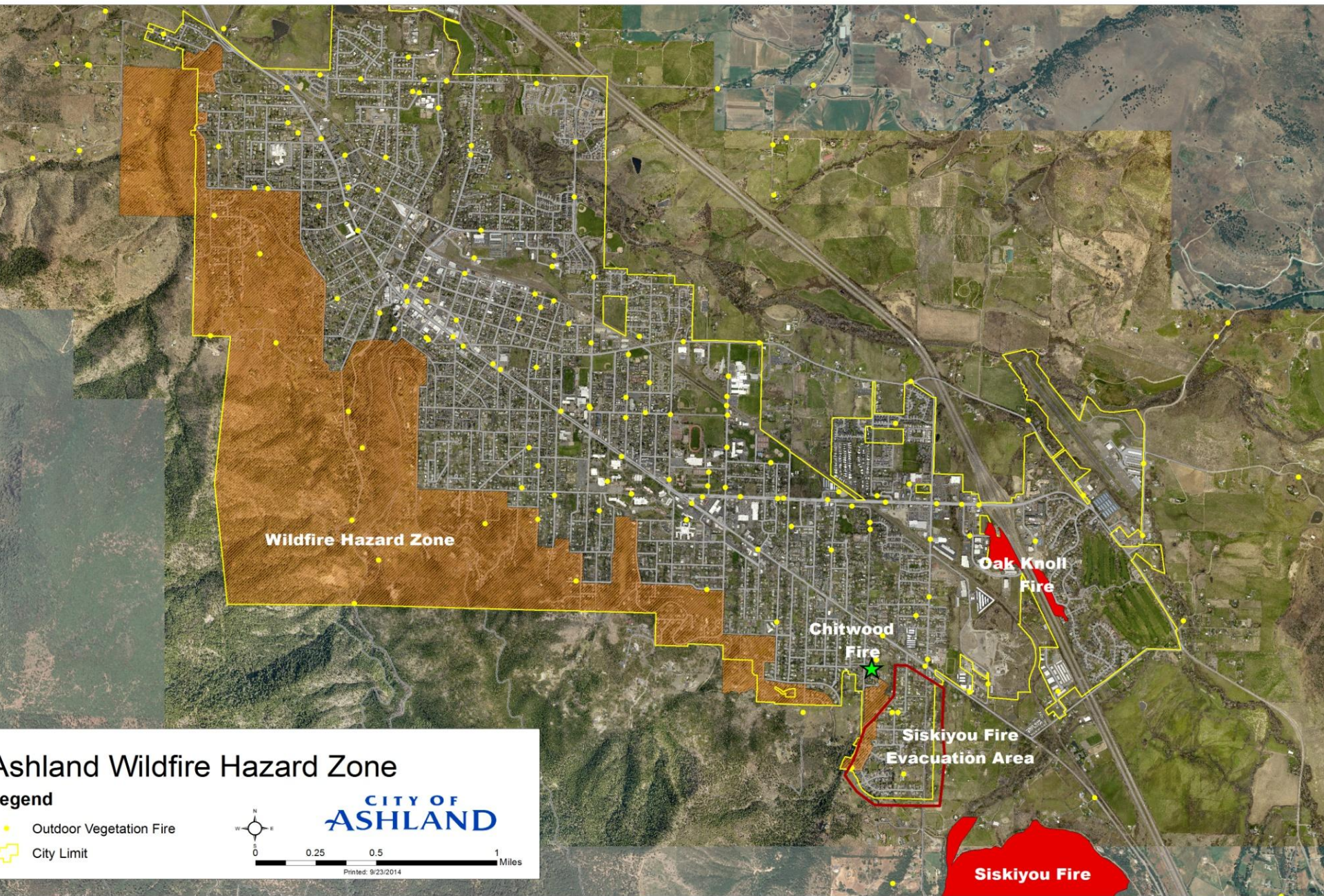


Proposed Wildfire Hazard Zone Expansion



Why is this Needed?

- Protect life and property and provide for firefighter safety
- Wildfires are occurring throughout the City, and have lead to loss of property
- Highly flammable vegetation continues to be planted throughout the city



Wildfire vs Forest Fire

- A forest fire can be a wildfire, but a wildfire doesn't have to be a forest fire
- A wildfire is any uncontrolled fire burning in vegetation
- Wildfires can start in vegetation (match, lightning, etc...) or result from a home or car fire spreading to vegetation.
- We typically use "wildfire" to describe all vegetation fires, including those in the forest

What is a Wildfire? Almeda Fire



What is a Wildfire? Chitwood Lane

WILDFIRE TYPE FUELS



LELAND CYPRESS SCREENING



What is a Wildfire? Clear Creek Drive

WILDLAND FUEL TYPES



Oak Knoll Fire Vegetation Became Wildfire Fuels

LOOKED LIKE



BEHAVED LIKE



Oak Knoll Fire 2010



Oak Knoll Screening Vegetation

LELAND CYPRESS



STUCCO HOME



Frances Lane Fire: Screening Vegetation

NEIGHBOR'S SCREENING



IMPACTED THEIR HOME



Research Results

Research indicates the potential for home ignition is based on:

- Home's fuel characteristics
- Heat sources within **100-200 feet** adjacent to a home

(Cohen 1995; Cohen 2000; Cohen and Butler 1998)

Embers:

- Major source of home destruction
- Hundreds or thousands of embers are generated from just a few burning trees
- In close proximity to a neighborhood = significant exposure to a large number of homes.



<https://www.disastersafety.org/disastersafety/ibhs-wildfire-ember-storm-test-demonstration-photos/>

Screening Material

HIGHLY FLAMMABLE



FIRE RESISTANT



Landscape Change

HIGHLY FLAMMABLE



MUCH, MUCH BETTER



Proposed Wildfire Hazard Zone Expansion: What it means for you

- Would apply City-wide
- When reroofing more than 50% of a building, roof has to be fire resistant (Class B or A)
 - No fuel breaks or changes in landscaping proposed for reroofing projects

Proposed Wildfire Hazard Zone Expansion: What it means for you

- Would apply City-wide
- ONLY applies to new construction and additions to existing structures
 - Requires minimum 100 foot home protection zone or to property line
 - Select fire resistant plants spaced for fire safety (at mature size)

Other Changes: Tree Removals and Screening Vegetation

- Seeking exempt status for removing flammable trees across the City.
 - Only after inspection by Fire Department
 - There may be a permit still needed in certain situations
- Screening required on flag lots and other locations would have to be fire resistant

Fire Hazard Trees



Fire Safe Landscapes Can Be Attractive and Water Wise!



Your Input and Questions