

STORM DRAINS:

Do you know where the water (and any debris) goes?

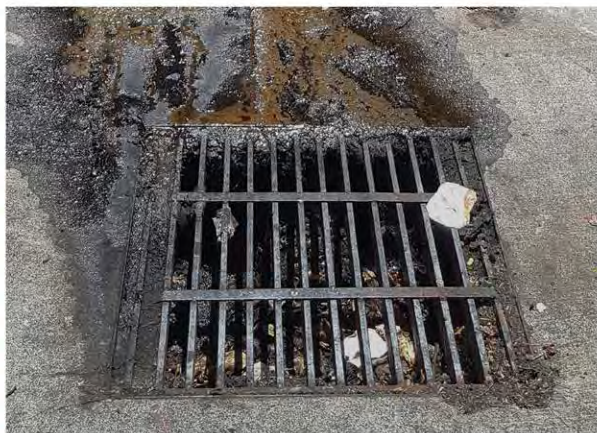
(We bet you will be surprised...)

It flows untreated directly into our streams.

Did you know...

Stormwater runoff is one of the leading causes of water pollution in the United States. Stormwater will pick up dirt, trash, oil, grease, chemicals, and any other pollutant as it flows over roads and lawns and into stormdrains.

In the Rogue basin, stormwater runoff does NOT go to a water treatment plant before entering our streams and rivers. The stormwater transported by streets, gutters, curbs, drains, and open channels ends up going directly into our streams and then to the Rogue River.



Common Stormwater Pollutants:

- Motor Oil, Fuel, Grease, & other fluids
- Pet Waste
- Sediment
- Pesticides & Herbicides
- Fertilizers
- Yard Waste



Keeping stormwater clean & protecting our surface water is a job for all of us.

BROUGHT TO YOU BY



Find us on 

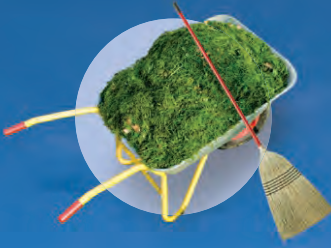
Stream Smart - a clean water project

For More Information Visit:
www.stream-smart.com

Please keep our streams and communities clean.

1 Sweep yard debris

rather than hosing or blowing it into the street. Think about composting or recycling to properly dispose of yard waste. The stream does not need nutrients from your yard.



3 Wash vehicles

at the car wash or on pervious surfaces like lawns. Don't let dirty wash water enter the stormdrain. Car washing on the lawn allows the turf and soil to filter dirty water.



4 Consider using alternatives to **yard & household chemicals**. When you do use toxic products, follow the instructions and dispose of properly.

5 Pet wastes

contain bacteria and pathogens and are a source of pollution. Keep pet wastes out of stormwater systems and streams.



6



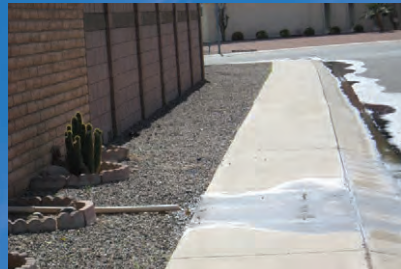
Keep up on **vehicle maintenance** to prevent and reduce leaks.

Call your local disposal company or neighborhood automotive store to see which fluids they take for recycling or disposal.

7

No dirty **wash water**

down the street. Soapy water can go in the sanitary sewer or onto planted areas.



2 Pool water

can become a stormwater pollutant when it is green, full of chemicals, or comes from a salt pool.

Check with your municipality for the proper method of disposing of pool water before discharging.

To report illegal dumping into storm drains call Oregon emergency response system: 800-452-0311

REMEMBER: ONLY RAIN IN THE STORM DRAIN