

CITY OF ASHLAND CLIMATE AND ENERGY ACTION PLAN

PROPOSAL FOR PLAN DEVELOPMENT AND PUBLIC ENGAGEMENT

DECEMBER 15, 2015



PERKINS+WILL



PERKINS+WILL

December 15, 2015

David Kanner
City Administrator
City of Ashland
90 N. Mountain Avenue
Ashland, OR 97520

Re: City of Ashland Climate and Energy Action Plan

Dear Mr. Kanner,

Thank you for the opportunity to submit for this important solicitation. Perkins+Will would be honored play a vital role in the creation of a Climate and Energy Action Plan for the City of Ashland, which will help the local community be involved in the early stages of planning for the sustainable future of their neighborhood.

We have a wealth of planning experience in this realm and have the resources to complete this project and assist the City with delivery of the Action Plan. Having a positive influence on the environment is of great value to us as a firm and to the team we have assembled.

Our team includes Perkins+Will, Puttman Infrastructure, Inc., PAE, and JLA Public Involvement, all of whom bring passion and expertise uniquely aligned for this project in sustainability, place-making, engineering and public engagement. Together we will help you make plans to move toward the future with a shrinking environmental footprint and strategies that are as comprehensive and effective as possible. This includes not only capital improvement strategies, but also operational strategies in order to help address Scopes 1, 2 and 3 emissions collectively.

Please let me know if we can provide any further information to support this Request for Proposals.

Sincerely,



Brodie Bain, FAIA, Principal
brodie.bain@perkinswill.com
206.381.6074

TABLE OF CONTENTS /



01. PROPOSAL SUBMISSION FORM	6
02. UNDERSTANDING OF REQUESTED SERVICES	9
Summary Narrative	10
Understanding of Plan Document Contents and Project Schedule	11
Understanding of Public Engagement Process	12
03. PROJECT TEAM AND QUALIFICATIONS	14
Key Personnel	15
Principal Involvement	15
Project Manager Involvement	15
Sub-Contractor Tasks, Qualifications and Responsibilities	15
Relevant Projects	26
04. CAPABILITIES AND RESOURCES	30
05. PROPOSED TIMELINE AND SCHEDULE FOR COMPLETION	34
06. REFERENCES	36
07. CONTRACTUAL TERMS AND CONDITIONS	38
Acceptance of Contract Provisions	42
Proof of Insurance	43
Certificate of Compliance	45
Procurement Eligibility	47
Addenda Receipts	49
08. COST PROPOSAL	SEE SEPARATE ENVELOPE

01. PROPOSAL SUBMISSION FORM

EXHIBIT A

Request for Proposals

CLIMATE AND ENERGY ACTION PLAN Plan Development and Public Engagement

Proposal Submission Form

The undersigned proposer submits this proposal in response to the City's Request for Proposals (RFP) for the **Climate and Energy Action Plan, Plan Development and Public Engagement**, released on **November 4, 2015**. The proposer warrants that proposer has carefully reviewed the RFP and that this proposal represents proposer's full response to the requirements described in the RFP. The proposer further warrants that if this proposal is accepted, the proposer will contract with the City, agrees to the terms and conditions found in the attached contract and RFP or has submitted terms and conditions acceptable to the City, and will provide all necessary labor, materials, equipment, and other means required to complete the work in accordance with the requirements of the RFP and contract documents.

The proposer hereby acknowledges the requirement to carry or indicates the ability to obtain the insurance required in the contract. Indicate in the affirmative by initialing here: BB

The proposer hereby acknowledges receipt of Addendum Nos. 1, 2, 3, 4, 5&6 to this RFP.

Name of Proposer:	Brodie Bain
Business Address:	1221 Second Avenue, Suite 200
	Seattle, WA 98101
Telephone Number:	206.381.6074
Fax Number:	206.441.4981
Email Address:	brodie.bain@perkinswill.com
Authorized Signature:	
Printed/Typed Name:	Brodie Bain
Title:	Associate Principal
Date:	December 15, 2015

02. UNDERSTANDING OF REQUESTED SERVICES

SUMMARY NARRATIVE /

UNDERSTANDING OF THE PROJECT

We understand that the Climate and Energy Action Plan project is about reducing greenhouse gasses and helping Ashland prepare for the impacts of climate change. The plan is about building consensus around a shared goal then developing a plan to get there. We understand that this project is about developing strategies that address Oregon's existing policy context that promote growth of Ashland's successful conservation programs and that build feasible resiliency into the City's infrastructure and systems. The Climate and Energy Action Plan is about defining achievable, cost-effective solutions and measureable actions for the near- and long-term that reflect Ashland's collective vision for the future.

APPROACH, PROCESS, METHODOLOGY AND PLAN

Perkins+Will has assembled a diverse team of experts with deep experience in systems thinking, sustainable energy systems design, utilities infrastructure creation, master planning and public engagement.

Our approach is to be a facilitator and to deliver a plan that provides social, economic and environmental resilience to Ashland. This approach is three fold: 1) focus on developing climate projections from existing sources; 2) conduct a vulnerability assessment for key assets and systems to prioritize the most at-risk elements; and 3) develop targeted actions that link climate change considerations with existing Ashland Conservation Division programs.

The process by which we deliver this approach is broken into three phases: "*Research and Goal Setting*," followed by "*Priority Planning*,"

then "*Implementation Planning*." Transparency of process and public engagement are a consistent thread through each phase, providing opportunities for stakeholder input, dialog and education.

Climate Research and Goal Setting

This initial phase will include a kickoff meeting with the key project stakeholders and team members where we will identify project vision, define areas of research and refine the public engagement format and timeline. The Perkins+Will team will review the GHG inventory and climate data. For the first team meeting, our team will prepare a preliminary GHG and vulnerability assessment report to help guide the discussion toward baselines and targets that will define future GHG reduction strategies and climate actions. We will then develop the content for the informational video and project website and other engagement strategies to solicit community input. The team will submit draft reports and public engagement content for City approval and authorization to advance to the next phase.

Priority Planning

To kickoff the Priority Planning phase, the design team will combine vulnerability assessments with probability of occurrence and consequences to prioritize the strategies based on risk and available resources. Here we will also seek synergies with ongoing successful City conservation programs and likelihood for success in the short- and long-term. The resulting prioritized list will form a set proposed alternatives that will be distributed publicly as an online survey and project literature to gather public input. JLA will prepare the results of the survey and other outreach efforts and the team will submit draft reports

and public engagement content for City approval and authorization to advance to the next phase.

Implementation Planning

Focusing on the priority planning areas identified in the previous phases, the team will work with the City and the various stakeholders to take the results of the community engagement effort and develop an implementation plan. We will research and adopt best practices from successful CAP's of other relevant communities to use in implementing adaptation plans. The preferred alternatives will be judged based on social and economic impacts, regulatory constraints, engineering feasibility, and synergy with existing policies, master plans and Conservation Division programs. Each action will include methods for measuring progress toward a defined goal. We anticipate that the plan will include not only built solutions, but also policy changes and identification of possible public/private partnerships and availability of funding sources to complete such. The tasks and responsibilities for each action will form the basis for the implementation timeline. The team will submit a draft Community Meeting presentation of the resulting actions and schedule for City approval and authorization. Public comments will be incorporated into a Draft Climate and Energy Action Plan and submitted to the City for review and comment. The team will incorporate City comments and submit the final Climate and Energy Action Plan document to the City to publish on the project web site.

UNDERSTANDING OF PLAN DOCUMENT CONTENTS AND PROJECT SCHEDULE /

Our understanding of the contents of the Climate and Energy Action Plan are outlined below. The project schedule begins with City Approval in January 2016 and ends with Final Draft presentation to the City Council in January 2017. The plan contents are addressed in one of three project phases as indicated. All of the contents which will be assembled for inclusion in the final plan.

Phase 1 “Research and Goal Setting” comprises the assessment of GHG inventory results and current and forecasted climate trend data for the region as well as identifying the GHG reduction targets for short, interim and long term (scopes 1, 2, 3). The project phase duration is planned as 4 months from January to April 2016.

Phase 2 “Priority Planning” includes development of Climate adaptation strategies that augment mitigation strategies. In the Priority Planning phase, through targeted public

outreach we articulate challenges and opportunities to the community in meeting GHG reduction goals with an educational video, a project web site developed in phase 1 and via online surveys and table events in phase 2. The Priority Planning phase duration is planned as 3 months between May and July 2016.

Phase 3 “Implementation Planning” includes Implementation actions across all climate categories and community groups with costs, progress toward targets and ease of implementation. In this phase the team will develop and use methods for measuring each action’s benefits while also developing tools to measure performance toward the goals identified in phase 1. The plan will include reporting plans to inform the public regarding progress and achievements over time.

Proposal strategies and actions are assembled into a format that is graphic rich to assist the Council in

incorporating actions into the City Budget while also educating and informing citizens and stakeholders. We will use the best practices and lessons learned of other relevant communities who have prepared similar Climate Action Plans.

The Implementation Planning phase will include research of current policies and master plans to identify plan conflicts and synergies. We will also seek to integrate other partner goals and targets were feasible, including those of Southern Oregon University, Ashland School District, Oregon State Forests, local businesses and neighborhood organizations. While developing the implementation plan, our team will confirm that the proposed strategies meet or exceed state level GHG and Climate targets and plans. Phase 3 duration is planned as 5 months between September 2016 and January 2017.

UNDERSTANDING OF PUBLIC ENGAGEMENT PROCESS /

The JLA team will work with the City of Ashland and the project team to finalize the public involvement strategy, identify opportunities for public input and coordinate public meetings and events. The RFP identifies the need to engage a broad range of the community in the development of the Climate and Energy Action Plan. Our approach includes a variety of public outreach and education tools, such as eye-catching public information materials, an interactive website, community tabling events, an informational video, online surveys and a community open house. We've found these types of public involvement tools to be successful in terms of building community awareness and understanding of the need for a planning document like the Climate and Energy Action Plan, as well as encouraging meaningful participation in the development of the plan. A robust public education and outreach effort will result in a Climate and Energy Action Plan that has extensive community buy-in and support.

Our public involvement process will center on the following tasks:

PROJECT KICK-OFF (JANUARY TO APRIL 2016)

Public Information

JLA will prepare a general informational brochure or fact sheet to inform people about the Climate and Energy Action Plan. This document may include an overview of the project, key messages, goals, opportunities for engagement and a timeline. The informational fact sheet will also direct people to the project website and a primary point of contact for more information.

Project Website

JLA will develop a website to serve as an informational hub for the project. The website will include a project overview, meeting dates/public engagement opportunities, a project timeline and project contact information. The website will also host the informational video and online survey.

Educational Video

Videos are a dynamic and engaging way for stakeholders to learn about a project. JLA proposes to create a short informational video that provides an overview of the project, including the project need, goals and possible short- and long-term objectives. The video will be composed of a combination

of interviews, scripted narration and animated or illustrative content. Videos are easy to share via email or posts on project-related sites and forums. This type of video can really improve and increase the feedback received from the public by providing a solid foundation of information for a target audience. Video can also be used for presentations by the city and/or the project team to community groups and key stakeholders. An example of a JLA-produced video for Metro's Climate Smart Communities Scenarios video can be found at: <https://vimeo.com/62831829>.

Project Stakeholders Database and E-mail Distribution

JLA will develop a project stakeholders e-mail list that includes interested parties from the public who might join the project e-mail list via the project website and other key community stakeholders, such as Southern Oregon University staff, faculty and students, Ashland School District, Oregon Shakespeare Festival staff, Ashland Chamber of Commerce and Visitors Bureau, area businesses and any others identified by the city. This list will be used to distribute project updates, such as the online survey and the open house.

**GENERATING PUBLIC PREFERENCES
(MAY TO JULY 2016)**

Targeted Canvassing and Outreach

Canvassing area businesses, as well as tabling at community events and high-traffic areas has proven to be a highly successful method for educating a broader cross-section of the community than would normally be engaged through attendance at public meetings. JLA will work with City of Ashland staff to identify the best canvassing and outreach opportunities in the Ashland area.

These events will provide the public with relevant project information as well as an opportunity to ask questions and engage with members of the project team. The online survey will also be promoted at these events, offering an opportunity to provide feedback on the types of climate and energy adaptation strategies they would support. The informational brochure, website and video will be available and on display at these events.

Online Survey

JLA will develop an online survey in conjunction with city staff and the project team to solicit the broad general public's feedback about their preferences for strategies for greenhouse gas emission reductions

and climate adaptation strategies and actions. The survey will be available on the project website and will be promoted through canvassing, information tabling events and e-mails to the project stakeholders list.

**DRAFT AND FINAL PLAN
DEVELOPMENT
(AUGUST 2016 TO JANUARY 2017)**

Community Meeting

A culminating community open house will provide stakeholders, including the broader public, with an opportunity to learn about the Climate and Energy Action Plan and be able to review draft sections of the plan prior to its adoption by the City Council. We will design a purposeful and interactive community event that educates the public about the plan and collects valuable, informed, and meaningful feedback that will be considered by the project team.

Final Report

JLA will draft a report detailing the public involvement process, summarizing public input and perspectives about greenhouse gas reductions and climate adaptation strategies and actions. The summary report will be incorporated into the Climate and Energy Action Plan.

**WHAT WE'VE LEARNED FROM
STAKEHOLDERS**

A public project is a dialogue with the community and people need a forum to express their hopes and concerns. They must believe that their contributions are heard and will help guide decisions.

An educated public is up to the challenge of planning for the future. People lead busy lives. To be effectively engaged, they need to be informed and educated on study context, purpose, choices, performance and tradeoffs in ways, and at a pace, that work for them.

Honor and respect people: They will know when you are sincere and when you are just going through the motions.

Competing perspectives are healthy and should be welcomed.

Transparency supports understanding and trust. Allowing the public to understand the context of the project and conveying them so they can be understood is critical for building trust.

03. PROJECT TEAM AND QUALIFICATIONS

KEY PERSONNEL /



Principal Involvement

Brodie Bain lends her extensive master planning and consensus-building expertise to lead the key stakeholder goal setting, priority planning and action planning sessions. She is available to meet the project needs over the duration of the timeline.

Project Manager Involvement

Dan Seng is responsible for project delivery, setting and maintaining the project schedule, coordinating the team responsibilities and scope, managing costs, and maintaining overall quality. Dan is available to meet the project needs over the duration of the timeline.

Sub-Contractor Tasks, Qualifications and Responsibilities

A list and description of tasks, qualifications and responsibilities of proposal sub-contractors is provided on page 31.

BRODIE BAIN, FAIA, AICP, LEED AP®

Principal-In-Charge



As Planning Director, Brodie brings over 25 years of architectural and planning experience. Building upon her district-scale planning work, Brodie developed tailored strategies that help institutions and municipalities understand their environmental footprint. Clients include EcoDistricts, where she led development of their first assessment protocol, Seattle University, the University of Washington Tacoma, Pacific Lutheran University and Ohio State University. The OSU Sustainability Plan sought to be as comprehensive as possible, including strategies for Energy, Carbon, Water, Ecosystem Function, Food, Purchasing, Waste Research & Curriculum, as well as a Climate Action Plan.

EDUCATION

Master of Architecture
University of Illinois

Bachelor of Science
Environmental Studies
Trinity College

Career Discovery
Landscape Architecture
Harvard University

Design Firm Leadership and
Management Certificate
University of Washington

REGISTRATIONS

Architecture: Washington
City Planning: APA

PROFESSIONAL AFFILIATIONS

American Planning Association (APA)
American Institute of Certified Planners
(AICP)
American Institute of Architects (AIA)
Society for College and University
Planners (SCUP)
Environmental Design Research
Association (EDRA)
Association for the Advancement of
Sustainability in Higher Education
(AASHE)
Seattle Design Commission

RELEVANT EXPERIENCE

Portland Sustainability Institute EcoDistrict
Assessment Protocol*
Portland, Oregon

Seattle University
-Major Institution Master Plan
-Campus Housing Master Plan*
-Sustainability Plan*
-Streetcar/Campus Edge Study*
Seattle, Washington

University of Washington, Tacoma
-Campus Master Plan Update*
-Sustainable Infrastructure Master Plan*
-Library Master Plan*
Tacoma, Washington

Pacific Lutheran University
-Facilities Master Plan Update
-Campus and Sustainable Master Plan*
-Major Institution Master Plan
-University Center Renovation*
-Athletics and Recreation Planning Study*
-Olson Auditorium, Gym and Classroom
-Building Renovation Planning*
-Library Visioning and Programming*
-Rieke Science Center Feasibility Studies*
-Rieke Science Center Lab Upgrades*
-Interior Master Plan*
-Campus Entry and Core Campus*
-South Campus Open Space Plan*
Parkland, Washington

The Ohio State University*
Sustainability Plan
Columbus, Ohio

Central Waterfront*

Urban Design Sustainability Planning
Seattle, Washington

Mars Hill Graduate School*
New Urban Campus Adaptive Re-Use
Seattle, Washington

First Hill Streetcar*
Plazas and Streetscape Design
Seattle, Washington

Stanford University
School of Medicine Space Master Plan
Palo Alto, CA

University of Virginia*
Campus Sustainability Consultant
Charlottesville, Virginia

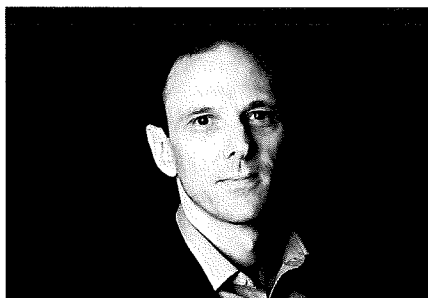
University of Washington, Seattle
-Campus Master Plan*
-College of the Environment Program Plan
-South Campus Precinct Plan
-Lewis Hall Predesign & Programming*
-Functional Space Evaluation*
Seattle, Washington

Central Washington University
-Campus Master Plan
-Athletics and N Campus Master Plan*
-Student Services Planning*
-Library Planning and Programming*
-Academic Facilities Planning Study*
Ellensburg, Washington

Duke University
Bi-Annual Action Plans*
Durham, North Carolina

DAN SENG, CDT, AIA, LEED AP®

Project Manager



Dan brings nearly 20 years of architectural, project management experience and quality assurance to the team. He has demonstrated expertise in navigating the regulatory hurdles of the entitlements process for large, complex projects and has worked on all aspects of projects, from design and documentation to construction administration and project management. Dan is currently the project architect for the Third and Lenora mixed-use residential project. He was the 2011 recipient of the University of Illinois Francis J. Plym Traveling Fellowship. His research on eco-districts, high-performance communities and urban planning in European cities is published in his book, *Sustainable Urban Design*.

EDUCATION

Bachelor of Science in Architecture
University of Illinois

l'Ecole D'Architecture
Universite D'Illinois Versailles, France

Academic Scholarship
University of Illinois

REGISTRATIONS

Architecture - Washington, California

AWARDS

AIA Washington Council Merit
Award for Civic Design, Center
for Urban Waters, 2008

AIA Seattle Regional Top Ten Green Award,
Center for Urban Waters, 2008

Urban Waters NAIOP Award, 2011

International Interior Design Association
IN Mass Design Award, Institute for
Systems Biology, 2011

RELEVANT EXPERIENCE

Point Wells
61-acre Mixed-Use Development
Snohomish County, Washington

Martin Selig Real Estate
3rd & Lenora
Mixed-Use Residential Tower
Seattle, Washington

Martin Selig Real Estate
15th & Market
Mixed-Use Office Building
Seattle, Washington

Sound Transit
South 200th Station
SeaTac, Washington

Sound Transit
South Bellevue to Overlake Transit Ctr
Final Design
Bellevue, Washington

Dillingham Kaka'ako Station Group
Honolulu Authority for Rapid Transit
8 Stations
Honolulu, Hawaii

Skyline at First Hill
Presbyterian Retirement Communities NW
Retirement Community
Seattle, Washington

Northeastern University
Seattle Campus
Seattle, Washington

Bayer Consolidation
Bayer Corporation
Seattle, Washington

Center for Urban Waters

City of Tacoma
Tacoma, Washington

Institute for Systems Biology
Headquarters tenant improvement
Seattle, Washington

Fred Hutchinson Cancer Research Center
Seattle, Washington

Belmont Elementary School No. 6
Los Angeles Unified School District
Los Angeles, California

South Anchorage Area High School
Anchorage School District
Anchorage, Alaska

San Diego Classroom Protopart
San Diego Unified School District
San Diego, California

ZymoGenetics, Inc.
cGMP Microbial Manufacturing Facility
Renovation and Expansion
Bothell, Washington

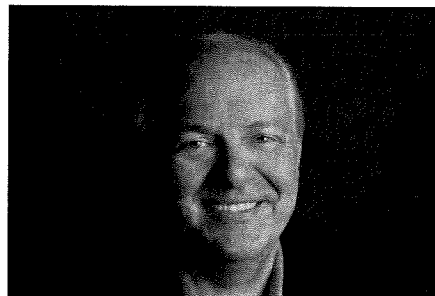
AB Miller High School
Learning Academy
Fontana Unified School District
Fontana, California

J. Paul Getty Trust*
Getty Villa North Campus
Los Angeles, California

**Work completed prior to joining
Perkins+Will*

DOUGLAS D. PIERCE, AIA, LEED® FELLOW

Resiliency and Sustainability Leader



Doug Pierce has strong experience with sustainability standards including LBC, LEED NC, LEED Ci, LEED EB, The Minnesota Sustainable Building Guide, SMaRT Sustainable Product Certification, Forest Stewardship Council Certification, the 2030 Challenge and the ANSI Integrative Process Standard. In 2011, Doug founded the North American Leadership Standards Campaign to help identify the best sustainable guidelines available for practitioners, institutions and business. He is a member of Perkins+Will's National Sustainable Design Initiative (SDI) Steering Committee and the Materials Health Steering Committee along with directing the Minneapolis SDI effort locally.

EDUCATION

Bachelor of Science in Architecture,
Kansas State University

REGISTRATIONS

Licensed Architect since 1992, Missouri

Leadership in Energy and Environmental
Design (LEED®) Accredited Professional,
2004

Sustainable Materials Rating Technology
(SMaRT) Accredited Professional, 2011

PROFESSIONAL AFFILIATIONS

Founder – US Green Building Council,
Minnesota Chapter

Board – US Green Building Council,
Minnesota Chapter (2010 -2011)

Board – National Leadership Standards
Campaign (2010 – present)

Chair – AIA Minnesota Committee on the
Environment (2002 – present)

Institute for Market Transformation to
Sustainability (MTS)

Co-Chair SMART Sustainable Building
Materials Committee (2005 - present)

MTS Executive Committee (2009 –
Present)

Board Chair - Cleanwater Action of
Minnesota (Chair 2007- Present / Board
2003)

RELEVANT EXPERIENCE

Great River Energy
Headquarters
Maple Grove, Minnesota
LEED® NC Platinum Certified

Target Corporation
LEED Consultant
T-2004 Prototype
McKinley Park, Chicago Illinois
LEED® NC Certified

Allen Park, Michigan
LEED® NC Certified
Davis, California
Pursuing LEED® NC Certification
Peterson Avenue, Chicago Illinois
LEED® NC Certified

Green Spaces Corporate Office
New Delhi, India
Pursuing LEED® NC Platinum Certification

Amherst H. Wilder Foundation
Wilder Center
St. Paul, Minnesota
LEED® NC Gold Certified

Laurentian Environmental Center
Minneapolis, Minnesota

Regenerative Design
Republic of Maldives

Wells Fargo Office Improvements
Minneapolis, Minnesota

Embassy Medical System
Colombo, Sri Lanka
Pursuing Living Building Status©

Allina Corporate Headquarters
Minneapolis, Minnesota

American Lung Association of MN
Healthy Office Prototype
St. Paul, Minnesota

MEDICA Corporate Headquarters
Minnetonka, Minnesota

Kraft Foods
Northfield, Illinois

Workforce Center
St. Cloud Technical College
St. Cloud, Minnesota

St. Louis County Government Center
Duluth, Minnesota

Wadena Deer Creek Middle School / High
School
Wadena, Minnesota

Winona State University
Science Center
Winona, Minnesota

North Hennepin Community College
Brooklyn Park, Minnesota

Winthrop & Weinstine
Minneapolis, Minnesota

University of Minnesota
Molecular Cellular Biology Building
Minneapolis, Minnesota

University of Minnesota
Translational Research Facility
Minneapolis, Minnesota

JON PENNDORF, AIA, NCARB, LEED AP BD+C

GHG Inventory Leader



Jon Penndorf is a project manager, and sustainability leader in Perkins+Will's Washington, DC office. He is involved in the management and high-performance design of a variety of project types, from focused interior renovations, to new construction, to energy management across a full portfolio. A recipient of the 2012 American Institute of Architects (AIA) Young Architect Award, Jon was the 2012 president of the Washington, DC chapter of the AIA and served on the chapter's board of directors from 2008 to 2014. He has spoken at local, regional, and national conferences on sustainable design and professional development topics.

EDUCATION

Master of Architecture, The Catholic University of America, 2000

Bachelor of Science, Architecture, The Catholic University of America

REGISTRATIONS

Registered Architect: DC and VA

National Council of Architectural Registration Boards (NCARB)

LEED Accredited Professional, Building Design and Construction

PROFESSIONAL AFFILIATIONS

AIA Committee on the Environment (COTE), National Advisory Group, 2015-2017

American Institute of Architects (AIA), National Strategic Council, Regional Representative, Mid-Atlantic Region, 2015

American Institute of Architects (AIA), National Chair of the AIA Young Architects Forum, 2014; National Vice Chair, 2013

American Institute of Architects (AIA), Washington, DC Chapter, Immediate Past President, 2013; Chapter President, 2012; President-Elect, 2011; Treasurer of the Board, 2010; Secretary of the Board, 2008-2009; Member, 2001-Present

RELEVANT EXPERIENCE

District of Columbia
Department of the Environment (DDOE)
Climate Change Adaptation Plan
Washington, DC

Federal Deposit Insurance Corporation (FDIC)
Energy Management Plan
Multiple Locations

General Services Administration
Sustainable Facilities Tool

National Institutes of Health (NIH)
Campus Sustainability Plan
Bethesda, MD

Federal Deposit Insurance Corporation (FDIC)
National Term Contracts
Washington, DC and Virginia

District of Columbia
Walter Reed Army Medical Center
Reuse Plan and Small Area Plan
Washington, DC

National Institutes of Health
Building 10, East Wing Renovation
Bethesda, MD

National Institutes of Health
Porter Neuroscience Research Center
Phase II
Bethesda, MD

The George Washington University
Law Learning Center, Phase I
Washington, DC

The George Washington University
Jacob Burns Community Legal Clinics
Washington, DC

Scimores Academy
Fairfax, VA

District of Columbia Public Schools
Ballou Senior High School
Washington, DC

Flint Hill Upper School⁴
Oakton, VA

Flint Hill Lower/Middle School⁴
Renovation
Oakton, VA

Landon School Football Stadium⁴
Bethesda, MD

Wakefield High School¹
Arlington, VA

1100 Wilson Blvd
Spec Suites
Arlington, Va

Riveron Consulting
Multiple Locations

U.S. Marshals Service
Interior Renovation
Arlington, VA

Equity Residential
1500 Massachusetts Avenue
Interior Renovation
Washington, DC

THOMAS J. PUTTMAN, PE, AICP, LEED AP®

District Utility Leader



Tom Puttman has been at the forefront of innovative thinking, project generation, and value creation in the sustainable infrastructure market for 15 years. A nationally recognized leader in EcoDistrict and district infrastructure development, Tom has helped to create visionary and award-winning projects throughout North America, Europe, Asia and South America and has contributed greatly to transform Portland, his hometown, into one of the world's most sustainable cities. Tom is keenly skilled and experienced at working with public, private and non-profit partners to plan, design/build, finance, own and operate building-scale and district-scale energy and water systems.

EDUCATION

BS Civil Engineering
Gonzaga University

MS City and Regional Planning
Pratt Institute

REGISTRATION/CERTIFICATIONS

Professional Engineer
Certified Planner
LEED AP

COMMITTEES/ACTIVITIES

EcoDistricts Incubator (faculty)

EcoDistricts Technical Advisory Committee
(co-chair)

EcoDistricts (past Board member)

Massachusetts Institute of Technology
Green Economic Development Initiative
(research advisor)

University of Oregon Sustainability
Leadership Program (faculty)

RELEVANT EXPERIENCE

Bellingham Waterfront
Infrastructure Assessments
and Utility Master Plan
Bellingham, Washington

Sustainable Little Tokyo
Infrastructure and Investment Strategies
Los Angeles, California

Rose Quarter
District Energy Solutions
Portland, Oregon

Overlake Village District Energy
Sustainable Infrastructure Plan
Redmond, Washington

Jordan Downs
Infrastructure Development, Utility Master
Plan and Investment Plan
Los Angeles, California

Daybreak South Station District
Shared Energy Infrastructure and
Investment Plan
Salt Lake City, Utah

Pringle Creek Community District Energy
Sustainability Framework
and Investment Plan
Salem, Oregon

Sun Valley District Energy
Energy and Investment Plans
Denver, Colorado

South Waterfront
Master Planning, Infrastructure Concepts
and Investment Plan
Portland, Oregon

Lloyd EcoDistrict
Integrated Infrastructure Strategy and
Energy Action Plan
Portland, Oregon

The Brewery Blocks
LEED Mixed-Use Development
Portland, Oregon

Hassalo on 8th Utility Infrastructure
Infrastructure Development and District
Energy, Wastewater Treatment and Reuse
Systems
Portland, Oregon

ALLAN MONTPPELLIER, PE
MEP Systems Design Leader



Allan is a mechanical engineer with more than 20 years of experience focused on sustainable buildings and campuses. Four of his projects have been awarded the AIA COTE award, ten of his projects have achieved LEED ratings, and seventeen are on the path to ratings from Silver to Platinum. He has experience with a wide variety of project types from facility and campus assessments, to building and campus infrastructure design, to master planning. Allan brings to the team a collaborative approach with a focus on integrated systems through developing innovative alternatives leaning heavily on sustainable design strategies.

EDUCATION

Bachelor of Science,
Mechanical Engineering,
University of Alberta, AB

REGISTRATIONS

Professional Engineer: OR, WA, CA, ID,
MA, AZ, AK, AB, BC, UT
US Green Building Council LEED
Accredited Professional

PROFESSIONAL MEMBERSHIPS

American Society of Heating,
Refrigeration and Air Conditioning
Engineers (ASHRAE)
Cascadia Chapter Green Building Council
(USGBC)
American Institute of Architects
International Institute for Sustainable
Labs (Emerald City Chapter Treasurer)

RELEVANT EXPERIENCE

Seattle University
Sustainable Master Plan
Seattle, Washington

Eastern Washington University
NESST
Pursuing Living Building Challenge
Cheney, Washington

S (formerly Stadium East)
Pursuing LEED Gold and Seattle Living
Building Pilot Program via the Water Petal
Seattle, WA

South Puget Sound Community College
Master Plan
Olympia, Washington

Center for Urban Waters
LEED Platinum, 2010 AIA COTE Award,
2015 ASHRAE Technology Award
Tacoma, Washington

Kitsap SEED
Multi-Building Sustainable Project
Port Orchard, Washington

State of Washington
Heritage Center & Executive Office Building
Pursuing LEED Gold
Olympia, Washington

Kenmore City Hall
LEED Gold

Kenmore, Washington

Puyallup City Hall
LEED Gold
Puyallup, Washington

Seattle Aquarium Expansion
Conceptual Design
Seattle, Washington

Point Defiance Zoo & Aquarium
Implementation Plan
Tacoma, Washington

Nordic Heritage Museum
Design Build,
Pursuing LEED Silver
Seattle, Washington

Gray's Harbor College
STEM Building
Pursuing LEED Platinum
Aberdeen, Washington

Confidential Client
Parking Garage
Pursuing LEED Platinum
Portland Area, Oregon

Choate Rosemary Hall,
Pursuing LEED Platinum
Wallingford, Connecticut

PAUL SCHWER, PE
 Mechanical Systems Leader



Paul has more than 30 years of experience in mechanical system design and is a national leader in engineering for high performing and sustainable buildings. He is a Fellow at the International Living Future Institute and has provided expertise for over 45 LEED projects, 10 of them Platinum, and is currently engaged in several aimed at Living Building. His extensive experience in highly sustainable building desing makes him the ideal visionary for this project team. He has been president of PAE since 2004.

EDUCATION

Bachelor of Science, Mechanical Engineering, Bucknell University, Lewisburg, PA, 1985

REGISTRATIONS

Professional Engineer: ID,MT,NY,OR,WA

US Green Building Council LEED Accredited Professional

PROFESSIONAL MEMBERSHIPS

U.S. Green Building Council, Cascadia Chapter

American Society of Heating, Refrigeration, and Air Conditioning Engineers (ASHRAE)

Union of Concerned Scientists

American Society of Mechanical Engineers (ASME)

RELEVANT EXPERIENCE

Parkmerced Residential Development Master Plan, Pursuing LEED Silver, CalGreen San Francisco, California

Confidential Montana Net Zero Development Pursuing Net Zero Energy, Net Zero Water Montana

Oregon Zoo Master Plan Portland, Oregon

University of Washington – Tacoma Campus Master Plan WAThe Bullitt Center Living Building, Net Zero Energy, Net Zero Water, Net Zero Waste, Arch 2030 Seattle, Washington

Rocky Mountain Institute Innovation Center Pursuing beyond Net Zero Energy, Living Building Petals, Arch 2030, LEED Platinum Basalt, Colorado

Facebook MPK 20 West Campus Headquarters LEED Gold Menlo Park, California

Confidential Client Multiple Office Building Expansion Pursuing LEED Platinum Portland Area, Oregon

Bend Metro Parks & Recreation District Administration Building

LEED Gold, Arch 2030 Bend, Oregon

Oregon State University Energy Center LEED Platinum, Arch 2030 Corvallis, Oregon

LOTT Administration Education Center & Laboratory Campus Cogen System LEED Platinum Olympia, Washington

US Fish & Wildlife Corn Creek Visitors Center Designed to meet LEED Platinum, Net Zero Energy, Arch 2030 Las Vegas, Nevada

Confidential Client Sustainability Construction Standards and Owner Project Requirements Bay Area, California

MICHAEL KIM, PE
Electrical Systems Leader



Michael is an electrical engineer with over 20 years experience in consulting engineering, construction administration, and team management. He has provided design expertise for a wide range of projects, including master electrical communication distribution systems in military bases and governmental campuses. Michael specializes in low, medium, and high voltage power distribution, power generation, lighting, fire alarm and detection, data and communications, data center and mission critical systems, security and access control, and instrumentation and controls.

EDUCATION

Bachelor of Science, Electrical Engineering,
Washington State University, WA

REGISTRATIONS

Professional Engineer: WA, HI

RELEVANT EXPERIENCE

S (formerly Stadium East)
Pursuing LEED Gold and Seattle Living
Building Pilot Program via the Water Petal
Seattle, Washington

Yongsan Garrison Relocation to Camp
Humphreys Master Plan
Seoul, Korea

Energy Foundation Tenant Improvement
LEED Platinum
San Francisco, California

Point Defiance Zoo & Aquarium
Implementation Plan
Tacoma, Washington

Bently Reserve Building
LEED Gold
San Francisco, California

Ft. Lewis Child Development Centers
LEED Gold
Ft. Lewis, Washington

Ft. Lewis Railroad Upgrade
LEED Silver
Ft. Lewis, Washington

Washington State University
Troy Hall
Pursuing LEED Silver
Pullman, Washington

Mercer Island Center for the Arts
Pursuing LEED Silver
Mercer Island, Washington

Susannah Wesley Community Center
Honolulu, Hawaii

Arizona Memorial Visitor Center
Museum, Cultural Center, and Auditorium
Honolulu, Hawaii

Boeing Safety Promotion Center
Seattle, Washington

Kunsan Airforce Base
Theater Renovation
Gunsan, Korea

PAUL DEDYO, PE, LEED AP®

Civil Grading and Utilities Leader



Paul Dedyo is an associate and project manager who specializes in efficient, innovative and sustainable site planning and design. His 24 years of experience and collaborative, big-picture focus enable him to facilitate creative design and permitting solutions throughout each phase of a project. Paul’s extensive experience in stormwater drainage and utility design includes rainwater harvesting, low-impact stormwater management and hydraulic/hydrologic modeling. Paul served as the Water subcommittee chair for the EcoDistrict Initiative technical advisory committee in 2010 to develop an early draft of the toolkit guidelines and metrics for district or neighborhood scale sustainable development.

EDUCATION

Bachelor of Science, Civil Engineering
Tufts University

REGISTRATIONS

Professional Civil Engineer - OR, WA

LEED Accredited Professional

AFFILIATIONS

American Rainwater Catchment System
Association

Cascadia Green Building Council Member

The Intertwine

RELEVANT EXPERIENCE

City of Portland

Bureau of Environmental Services

Innovative Stormwater Facilities On-Call
Portland, Oregon

City of Portland

Bureau of Environmental Services

Stormwater Management Manual Revision

Portland, Oregon

Portland Parks & Recreation

On-Call Services 2000-present

Portland, Oregon

City of Oregon City

Willamette Falls Legacy Project

Master Plan

Oregon City, Oregon

City of Portland

Bureau of Environmental Services

Gateway Green Streets Master Plan

Portland, Oregon

Metro

Oregon Zoo

Comprehensive Capital Master Plan

Portland, Oregon

Metro

Washington Park Rail Drainage

Portland, Oregon

ADRIENNE DEDONA

Public Engagement Leader



Since 1999, Adrienne has served as a liaison between government agencies and the people they serve. She has designed and implemented numerous public involvement and outreach programs for projects, ranging from land use planning, transportation and transit, and sewer/water projects in Oregon and Washington. Her experience includes designing and facilitating public meetings, conducting stakeholder interviews and online surveys, managing committees, developing informational materials (websites, information kiosks/displays, fact sheets, newsletters, press releases), and large scale event coordination (ground breaking and ribbon cutting events, information fairs, town halls).

EDUCATION

Bachelor of Science, Life Science

TRAINING

Certified in SDIC

(Systematic Development of Informed Consent) by the Institute for Participatory Management

Institute of Cultural Affairs for Technology of Participation Group Facilitation Methods

RELEVANT EXPERIENCE

Cogeneration Project

Southern Oregon University

Ashland, Oregon

City of Tigard

Urban Forestry Code Updates

Tigard, Oregon

Sustainable Communities Facilitation

Clark County, Washington

Longview Water Supply Alternatives Study

Longview, Washington

Agricultural Preservation Advisory

Committee (APAC) Facilitation

Clark County, Oregon

Strategic Plan Updates

Clark Regional Emergency Services Agency (CRESA)

Clark County, Oregon

DEPARTMENT OF ENERGY AND THE ENVIRONMENT (DOEE) AREA RESEARCH CLIMATE ADAPTATION



LOCATION Washington, DC

The Department of Energy and Environment (DOEE) has taken a proactive stance on climate change and committed to identifying, prioritizing, and addressing the critical needs associated with this “new normal.”

Under DOEE’s leadership and in collaboration with key stakeholders in water, transportation, planning, parks, health and energy, the Perkins+Will team prepared a Climate Projections & Scenario Development report as the first step of a multi-phase project to develop a citywide climate adaptation and preparedness plan for the District of Columbia (the District).

A key step in assessing climate change vulnerability is identifying relevant climate information for probable and plausible futures. Since climate change projections are specific to geographic location, it was important to DOEE to

establish a set of climatic parameters describing the phenomena most relevant to DC.

The next steps, Vulnerability Assessments and Adaptation Plan Recommendations, are in process. The Vulnerability Assessment determines which critical assets are at risk while the Adaptation Plan offers plausible tactics for continued mitigation efforts and longer term adaptation and implementation strategies.

The overall Climate Change Adaptation Plan will provide an integrated analysis of climate projections, vulnerable assets, including an initial review of vulnerable populations and public health impacts and a risk-based, prioritized plan for adaptation and resiliency.

The target for completion is October 2015.

THE OHIO STATE UNIVERSITY SUSTAINABILITY PLAN



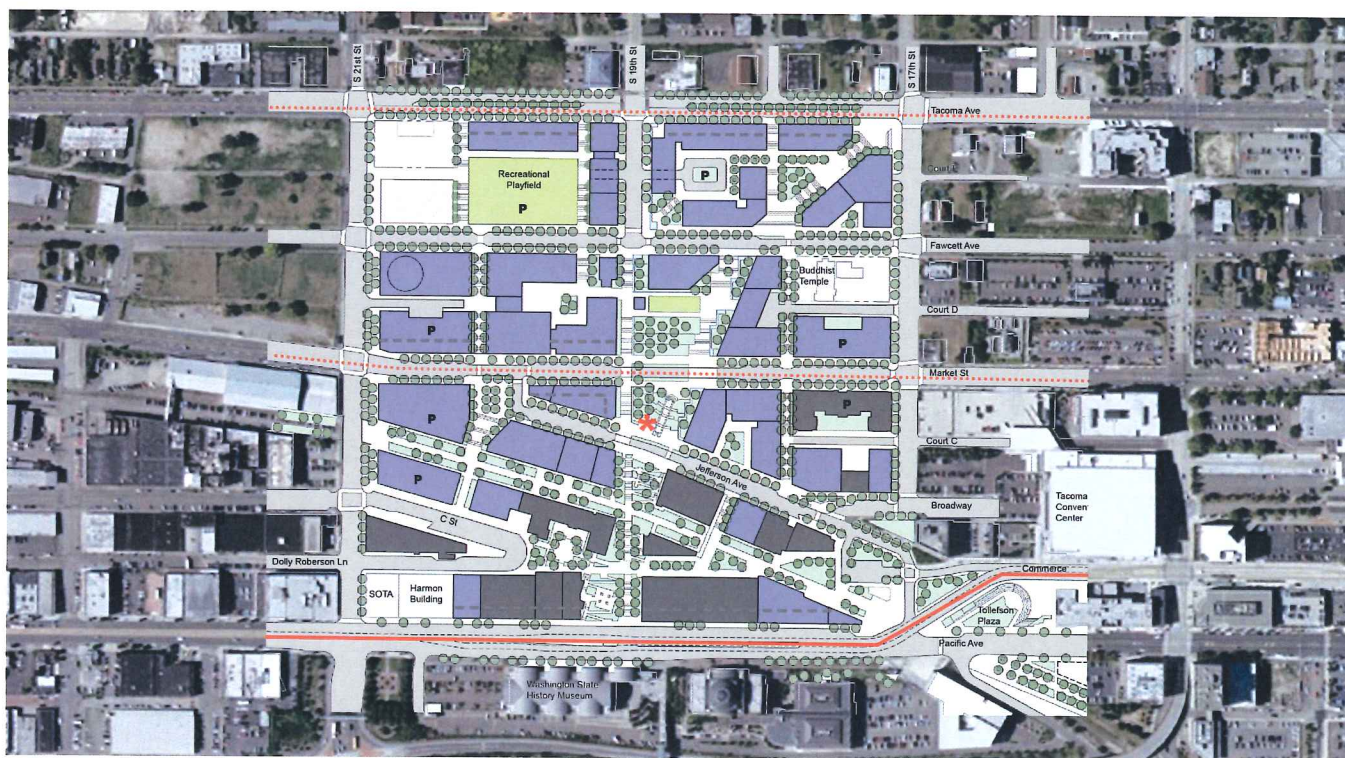
LOCATION Columbus, Ohio

Brodie Bain led the Ohio State University's Sustainability Plan Project Team with Heapy Engineering. The focus of the effort was to identify synergistic solutions and design standards to create a more sustainable campus consistent with the University's mission and climate change targets while integrating with the Campus Framework Plan led by Sasaki. Sustainability analyses included water consumption, ecological function of campus landscapes, a reduction of impacts from purchasing decisions, food systems and waste flows. Further, energy and greenhouse gas emissions data, as compiled by the University and its consultants, was incorporated into the Sustainability

Plan. Additionally, the Team produced OSU's Climate Action Plan to comply with the requirements of the American College and University President's Climate Commitment.

** Brodie Bain prior to joining Perkins+Will*

UNIVERSITY OF WASHINGTON TACOMA CAMPUS MASTER PLAN UPDATE AND INFRASTRUCTURE MASTER PLAN



LOCATION Tacoma, Washington

University of Washington Tacoma opened in 1992 as an upper division 2-year institution and is currently in the process of transitioning to a 4-year, full-service campus. This change required an update to the 2003 Campus Master Plan in order to plan for lower division support facilities such as student housing, student center, outdoor recreation space and additional library and study areas. Brodie led the process working closely with campus representatives to quantify space needs for the projected enrollment, and developing alternatives for full build-out of the campus (refined through input from the campus community, neighbors, city representatives). The Update

was coupled with a campus-wide sustainable infrastructure plan that Brodie also led and a campus stormwater management system with rainwater capture, cleansing, storage and re-use, a geothermal loop to help the campus reach carbon neutrality and integrating an abandoned railroad right-of-way as a bicycle corridor.

** Brodie Bain prior to joining Perkins+Will*

LLOYD ECODISTRICT ROADMAP AND INVESTMENT STRATEGY

Possible Future Development in the N/NE Quadrant



This rendering illustrates a possible development scenario meeting targets for 5,000 new housing units and 10,000 new jobs in the Lloyd District.

LOCATION Portland, Oregon

**PUTTMAN
INFRASTRUCTURE**

Puttman Infrastructure led a 40-member public and private stakeholder group to establish a \$6.7B investment plan to guide Lloyd EcoDistrict development efforts over the next 25-years. Core to the plan was an integrated infrastructure strategy to optimize utility infrastructure at the building and district scale. Clear district performance goals were identified as well concept strategies to meet them. Concept designs and costs estimates were used to establish a business case for each strategy and potential delivery partners were

identified. Puttman also developed a 5-year Energy Action Plan to guide existing building retrofits, new building energy efficiency, renewable energy (solar PV) and created a district energy system development.

04. CAPABILITIES AND RESOURCES

PROPOSER RESOURCES /

The following chart indicates team member percentage of total time availability to commit to this project based on current projected backlog:

Key Personnel	Project Role	Availability
BRODIE BAIN, FAIA, LEED AP	Principal-In-Charge	25%
DAN SENG, CDT, AIA, LEED AP	Project Manager	50%
DOUG PIERCE, AIA, LEED FELLOW	Resiliency and Sustainability Leader	20%
JON PENNDORF, AIA, NCARB, LEED AP BD+C	GHG Inventory Leader	25%
THOMAS PUTTMAN, PE, AICP, LEED AP	District Utility Leader	25%
ALLAN MONTPELLIER, PE	MEP Systems Design Leader	20%
PAUL SCHWER, PE	Mechanical Systems Leader	10%
MICHAEL KIM, PE	Electrical Systems Leader	15%
PAUL DEDYO, PE, LEED AP	Civil Grading and Utilities Leader	15%
ADRIENNE DEDONA	Public Engagement Leader	50%

PROPOSER MANAGEMENT AND PROXIMITY /

Our team is primarily based in Seattle and Portland areas to best serve the project needs. As such, team members in these offices will be your primary point of contact. Response times will be timely and appropriate to your requests. Perkins+Will, PAE and KPFF have capacity in the Northwest to serve this project directly. Our team is supported by the resources of multiple offices across the country as project needs dictate. Jon Penndorf is located in the Washington, D.C. office of Perkins+Will. He will be performing the GHG inventory analysis and related strategy discussions. Doug Pierce, an expert on resiliency and systems design, is located in the Minneapolis office and will lead the strategy and implementation discussions. The

structure of our team and respective organizations combines the advantage of regional cultural and regulatory knowledge with the added capacity, depth of specialized expertise and national project experience.

As outlined in the project approach section, our team member experience with the public engagement process for the SOU Cogeneration Project is key to the City of Ashland in having an actively engaged public as a part of the team in developing the Climate and Energy Action Plan.

Our team intends to take advantage of the frequent and economical flights between both Portland and SeaTac Airports to Medford Airport and conduct single day trips for team

meetings and the community meeting. Jon and Doug will travel to select meetings based on their respective expertise. For impromptu meetings or to reduce cost or environmental impact of travel our firms can facilitate Skype video conference calls for team meetings at your discretion.

URBAN DESIGN /



Arid Lands Institute (ALI), Perkins+Will and ARUP win 2015 Latrobe Prize for “Hazel”

Perkins+Will is proud to be part of the winning research team for the 2015 Latrobe Prize, awarded biennially by the College of Fellows of the American Institute of Architects (AIA). The prize includes a research grant of \$100,000 given over a two-year period, and is intended to broaden the perspective and scope of architecture and to encourage cross-disciplinary research.

The collaborative research effort, led by the Arid Lands Institute (ALI) of Woodbury University in Burbank, Calif., centers on the development and testing of a proprietary digital design tool known as “Hazel” that aims to enable arid communities to design and build the infrastructure needed to capture, retain and distribute stormwater runoff. The engineering firm Arup and the City of Los Angeles are also members of the study team. Perkins+Will will

have a lead role in the testing phase for “Hazel,” with both in-house trials and structured workshops for design teams working on demonstration sites, primarily from the Los Angeles office. The firm will also collect feedback and offer suggestions for enhancing the tool’s interface, performance, and outputs for the broader marketplace.

Perkins+Will’s collaboration with ALI was an outgrowth of an annual firmwide competition. Conceived by the Los Angeles office of Perkins+Will in the fall of 2014, the competition had 40 teams develop design concepts for a new water resource center for ALI. “Obviously, water is always at the top of our minds for projects in Los Angeles, even before the current drought began further decimating the region’s water resources,” says Leigh Christy, AIA, LEED, AP, Associate Principal for Perkins+Will in Los Angeles and one of the firm’s two principal investigators on the Latrobe Prize project. “The implications of the research to be funded by the Latrobe Prize are global in reach. These resources will be invaluable in

helping to make ‘Hazel’ into a robust tool that will eventually allow all architects and designers to help clients and communities better manage their precious water resources.”

The project also continues the firm’s tradition of engaging in research that elevates the state of practice. “Perkins+Will is proud to partner with Arid Lands Institute, Arup, and the City of Los Angeles,” says Perkins+Will Director of Research John Haymaker, Ph.D., AIA, LEED AP, the second principal investigator from the firm. “We believe that multidisciplinary collaborations between academia and industry are the most strategic way to meet some of the daunting challenges faced by the design profession. The tools and methods developed in this project will provide an important focus on water that complements and integrates with ongoing research Perkins+Will is conducting in energy, healthy materials, human performance and healing, building technologies, design processes, resiliency, and regenerative design.”

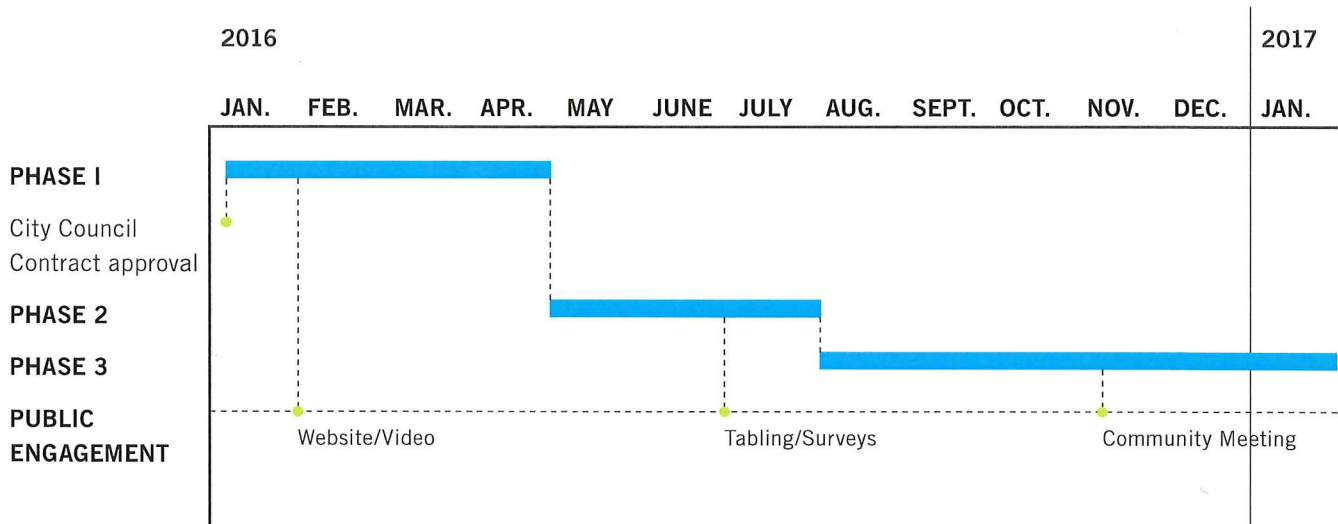


RESEARCH /

Perkins+Will is dedicated to innovation and the advancement of design through original research and collaboration. The firm believes that it can improve the performance of our buildings and the health of our environment by taking a more in-depth look at the issues facing the design profession. The firm's research group is led by Director of Research John Haymaker and includes a fellowship program and partnerships with academic and research institutions. In November of 2011, Perkins+Will launched a new nonprofit organization, AREA Research, for the purpose of advancing design through dedicated research. The formation of this organization represents a commitment to continued long-term research efforts by Perkins+Will.

05. PROPOSED TIMELINE AND SCHEDULE FOR COMPLETION

PROPOSED TIMELINE /



TEAM RESPONSIBILITY MATRIX /

Proposed timeline and tasks	P+W	PAE	KPF	TPI	JAL	Oriv
Phase 1 - Research, Assessment and Goal Setting - January to April, 2016						
• Kickoff Meeting	•	•	•	•	•	•
• Gather Information	•	•	•			
○ Interpret the ongoing GHG inventory results.	•	•		•		
○ Gather and assess climate forecast and local climate trend data	•	•				
○ Research key vulnerabilities	•					
• Phase Meeting	•	•	•	•	•	•
• Establish project parameters and timeline.	•	•	•		•	•
• Set the baselines and targets for the environmental strategies of future phases	•	•	•	•	•	•
• Identify project goals.	•	•	•			•
• Engage the community, stakeholders and elected officials	•				•	•
• Submit phase report	•					
• City review and phase II NTP authorization						•
Phase 2 - Priority Planning May to July, 2016						
• Phase kickoff meeting	•	•	•	•	•	•
• Develop potential strategies from preferred options	•	•	•	•		
• Evaluate pros/cons.	•	•	•	•		
• Develop Potential actions from preferred options	•	•	•	•		
○ online survey					•	•
○ targeted outreach					•	•
• Submit phase report	•					
• City review and Phase III NTP authorization						•
Phase 3 - Implementation Planning (August, 2016 to January, 2017)						
• Phase kickoff meeting	•	•	•	•	•	•
• Confirm proposed strategies,	•	•	•			•
• Define specific short, mid and long-term actions	•	•	•			•
• Develop the implementation timeline	•	•	•			•
• Community Meeting	•	•		•	•	•
• Issue Draft plan	•	•	•	•	•	
• City review comments on Draft plan						•
• Issue Final plan	•	•	•	•	•	

06. REFERENCES

REFERENCES /

FOR BRODIE BAIN

Rob Bennett
Chief Executive Officer
EcoDistricts
1223 SW Washington St, Suite 200
Portland, OR 97205
503.863.2562
rob@ecodistricts.org

Aparna Dial
Program Director
Ohio State University
1314 Kinnear Rd.
Columbus, OH 43212
614.292.3557
dial.15@osu.edu

FOR DOUG PIERCE

Kate Johnson
Department of Energy and the Environment
202.299.3355
katherine.johnson@dc.gov

FOR THOMAS PUTTMAN

Alisa Kane
Green Building and Development Manager
City of Portland Bureau of Planning and
Sustainability
503-823-7082
alisa.kane@portlandoregon.gov

FOR PAE

Denis Hayes
President
The Bullitt Foundation
206.343.0807
dhayes@bullitt.org

07. CONTRACTUAL TERMS AND CONDITIONS

EXHIBIT C - Contract for Climate and Energy Action Plan

<p>CITY OF ASHLAND 20 East Main Street Ashland, Oregon 97520 Telephone: 541/488-6002 Fax: 541/488-5311</p>	<p>CONSULTANT: CONTACT: ADDRESS: TELEPHONE: FAX:</p>
DATE AGREEMENT PREPARED:	COMPLETION DATE:
BEGINNING DATE:	
COMPENSATION:	
SERVICES TO BE PROVIDED:	
<p>ADDITIONAL TERMS:</p> <p>In the event of conflicts or discrepancies among the contract documents, the City of Ashland Contract for Personal Services will be primary and take precedence, and any exhibits or ancillary contracts or agreements having redundant or contrary provisions will be subordinate to and interpreted in a manner that will not conflict with the said primary City of Ashland Contract.</p>	
<p>FINDINGS: Pursuant to AMC 2.50.120, after reasonable inquiry and evaluation, the undersigned Department Head finds and determines that: (1) the services to be acquired are personal services; (2) the City does not have adequate personnel nor resources to perform the services; (3) the statement of work represents the department's plan for utilization of such personal services; (4) the undersigned consultant has specialized experience, education, training and capability sufficient to perform the quality, quantity and type of work requested in the scope of work within the time and financial constraints provided; (5) the consultant's proposal will best serve the needs of the City; and (6) the compensation negotiated herein is fair and reasonable.</p> <p>NOW THEREFORE, in consideration of the mutual covenants contained herein the CITY AND CONSULTANT AGREE as follows:</p> <ol style="list-style-type: none"> 1. Findings / Recitations. The findings and recitations set forth above are true and correct and are incorporated herein by this reference. 2. All Costs by Consultant: Consultant shall, at its own risk and expense, perform the personal services described above and, unless otherwise specified, furnish all labor, equipment and materials required for the proper performance of such service. 3. Qualified Work: Consultant has represented, and by entering into this contract now represents, that all personnel assigned to the work required under this contract are fully qualified to perform the service to which they will be assigned in a skilled and worker-like manner and, if required to be registered, licensed or bonded by the State of Oregon, are so registered, licensed and bonded. 4. Completion Date: Consultant shall start performing the service under this contract by the beginning date indicated above and complete the service by the completion date indicated above. 5. Compensation: City shall pay Consultant for service performed, including costs and expenses, the sum specified above. Payments shall be made within 30 days of the date of the invoice. Should the contract be prematurely terminated, payments will be made for work completed and accepted to date of termination. 6. Ownership of Documents: All documents prepared by Consultant pursuant to this contract shall be the property of City. 7. Statutory Requirements: ORS 279C.505, 279C.515, 279C.520 and 279C.530 are made part of this 	

contract.

8. **Living Wage Requirements:** If the amount of this contract is \$20,142.20 or more, Consultant is required to comply with chapter 3.12 of the Ashland Municipal Code by paying a living wage, as defined in this chapter, to all employees performing work under this contract and to any Subcontractor who performs 50% or more of the service work under this contract. Consultant is also required to post the notice attached hereto as Exhibit B predominantly in areas where it will be seen by all employees.
9. **Indemnification:** Consultant agrees to defend, indemnify and save City, its officers, employees and agents harmless from any and all losses, claims, actions, costs, expenses, judgments, subrogations, or other damages resulting from injury to any person (including injury resulting in death), or damage (including loss or destruction) to property, of whatsoever nature arising out of or incident to the performance of this contract by Consultant (including but not limited to, Consultant's employees, agents, and others designated by Consultant to perform work or services attendant to this contract). Consultant shall not be held responsible for any losses, expenses, claims, subrogations, actions, costs, judgments, or other damages, directly, solely, and proximately caused by the negligence of City.
10. **Termination:**
 - a. **Mutual Consent.** This contract may be terminated at any time by mutual consent of both parties.
 - b. **City's Convenience.** This contract may be terminated at any time by City upon 30 days' notice in writing and delivered by certified mail or in person.
 - c. **For Cause.** City may terminate or modify this contract, in whole or in part, effective upon delivery of written notice to Consultant, or at such later date as may be established by City under any of the following conditions:
 - i. If City funding from federal, state, county or other sources is not obtained and continued at levels sufficient to allow for the purchase of the indicated quantity of services;
 - ii. If federal or state regulations or guidelines are modified, changed, or interpreted in such a way that the services are no longer allowable or appropriate for purchase under this contract or are no longer eligible for the funding proposed for payments authorized by this contract; or
 - iii. If any license or certificate required by law or regulation to be held by Consultant to provide the services required by this contract is for any reason denied, revoked, suspended, or not renewed.
 - d. **For Default or Breach.**
 - i. Either City or Consultant may terminate this contract in the event of a breach of the contract by the other. Prior to such termination the party seeking termination shall give to the other party written notice of the breach and intent to terminate. If the party committing the breach has not entirely cured the breach within 15 days of the date of the notice, or within such other period as the party giving the notice may authorize or require, then the contract may be terminated at any time thereafter by a written notice of termination by the party giving notice.
 - ii. Time is of the essence for Consultant's performance of each and every obligation and duty under this contract. City by written notice to Consultant of default or breach may at any time terminate the whole or any part of this contract if Consultant fails to provide services called for by this contract within the time specified herein or in any extension thereof.
 - iii. The rights and remedies of City provided in this subsection (d) are not exclusive and are in addition to any other rights and remedies provided by law or under this contract.
 - e. **Obligation/Liability of Parties.** Termination or modification of this contract pursuant to subsections a, b, or c above shall be without prejudice to any obligations or liabilities of either party already accrued prior to such termination or modification. However, upon receiving a notice of termination (regardless whether such notice is given pursuant to subsections a, b, c or d of this section, Consultant shall immediately cease all activities under this contract, unless expressly

directed otherwise by City in the notice of termination. Further, upon termination, Consultant shall deliver to City all contract documents, information, works-in-progress and other property that are or would be deliverables had the contract been completed. City shall pay Consultant for work performed prior to the termination date if such work was performed in accordance with the Contract.

11. **Independent Contractor Status:** Consultant is an independent contractor and not an employee of the City. Consultant shall have the complete responsibility for the performance of this contract. Consultant shall provide workers' compensation coverage as required in ORS Ch 656 for all persons employed to perform work pursuant to this contract. Consultant is a subject employer that will comply with ORS 656.017.
12. **Assignment and Subcontracts:** Consultant shall not assign this contract or subcontract any portion of the work without the written consent of City. Any attempted assignment or subcontract without written consent of City shall be void. Consultant shall be fully responsible for the acts or omissions of any assigns or Subcontractors and of all persons employed by them, and the approval by City of any assignment or subcontract shall not create any contractual relation between the assignee or subcontractor and City.
13. **Default.** The Consultant shall be in default of this agreement if Consultant: commits any material breach or default of any covenant, warranty, certification, or obligation it owes under the Contract; its QRF status pursuant to the QRF Rules or loses any license, certificate or certification that is required to perform the Services or to qualify as a QRF if consultant has qualified as a QRF for this agreement; institutes an action for relief in bankruptcy or has instituted against it an action for insolvency; makes a general assignment for the benefit of creditors; or ceases doing business on a regular basis of the type identified in its obligations under the Contract; or attempts to assign rights in, or delegate duties under, the Contract.
14. **Insurance.** Consultant shall at its own expense provide the following insurance:
 - a. Worker's Compensation insurance in compliance with ORS 656.017, which requires subject employers to provide Oregon workers' compensation coverage for all their subject workers
 - b. Professional Liability insurance with a combined single limit, or the equivalent, of not less than Enter one: \$200,000, \$500,000, \$1,000,000, \$2,000,000 or Not Applicable for each claim, incident or occurrence. This is to cover damages caused by error, omission or negligent acts related to the professional services to be provided under this contract.
 - c. General Liability insurance with a combined single limit, or the equivalent, of not less than Enter one: \$200,000, \$500,000, \$1,000,000, \$2,000,000 or Not Applicable for each occurrence for Bodily Injury and Property Damage.
 - d. Automobile Liability insurance with a combined single limit, or the equivalent, of not less than Enter one: \$200,000, \$500,000, \$1,000,000, or Not Applicable for each accident for Bodily Injury and Property Damage, including coverage for owned, hired or non-owned vehicles, as applicable.
 - e. Notice of cancellation or change. There shall be no cancellation, material change, reduction of limits or intent not to renew the insurance coverage(s) without 30 days' written notice from the Consultant or its insurer(s) to the City.
 - f. Additional Insured/Certificates of Insurance. Consultant shall name The City of Ashland, Oregon, and its elected officials, officers and employees as Additional Insureds on any insurance policies required herein but only with respect to Consultant's services to be provided under this Contract. The consultant's insurance is primary and non-contributory. As evidence of the insurance coverages required by this Contract, the Consultant shall furnish acceptable insurance certificates prior to commencing work under this contract. The certificate will specify all of the parties who are Additional Insureds. Insuring companies or entities are subject to the City's acceptance. If requested, complete copies of insurance policies; trust agreements, etc. shall be provided to the City. The Consultant shall be financially responsible for all pertinent deductibles, self-insured retentions and/or self-insurance.
15. **Governing Law; Jurisdiction; Venue:** This contract shall be governed and construed in accordance with the laws of the State of Oregon without resort to any jurisdiction's conflict of laws, rules or doctrines. Any claim, action, suit or proceeding (collectively, "the claim") between the City (and/or any other or department of the State of Oregon) and the Consultant that arises from or

relates to this contract shall be brought and conducted solely and exclusively within the Circuit Court of Jackson County for the State of Oregon. If, however, the claim must be brought in a federal forum, then it shall be brought and conducted solely and exclusively within the United States District Court for the District of Oregon filed in Jackson County, Oregon. Consultant, by the signature herein of its authorized representative, hereby consents to the in personam jurisdiction of said courts. In no event shall this section be construed as a waiver by City of any form of defense or immunity, based on the Eleventh Amendment to the United States Constitution, or otherwise, from any claim or from the jurisdiction.

16. THIS CONTRACT AND ATTACHED EXHIBITS CONSTITUTE THE ENTIRE AGREEMENT BETWEEN THE PARTIES. NO WAIVER, CONSENT, MODIFICATION OR CHANGE OF TERMS OF THIS CONTRACT SHALL BIND EITHER PARTY UNLESS IN WRITING AND SIGNED BY BOTH PARTIES. SUCH WAIVER, CONSENT, MODIFICATION OR CHANGE, IF MADE, SHALL BE EFFECTIVE ONLY IN THE SPECIFIC INSTANCE AND FOR THE SPECIFIC PURPOSE GIVEN. THERE ARE NO UNDERSTANDINGS, AGREEMENTS, OR REPRESENTATIONS, ORAL OR WRITTEN, NOT SPECIFIED HEREIN REGARDING THIS CONTRACT. CONSULTANT, BY SIGNATURE OF ITS AUTHORIZED REPRESENTATIVE, HEREBY ACKNOWLEDGES THAT HE/SHE HAS READ THIS CONTRACT, UNDERSTANDS IT, AND AGREES TO BE BOUND BY ITS TERMS AND CONDITIONS.
17. **Non-appropriations Clause.** Funds Available and Authorized: City has sufficient funds currently available and authorized for expenditure to finance the costs of this contract within the City's fiscal year budget. Consultant understands and agrees that City's payment of amounts under this contract attributable to work performed after the last day of the current fiscal year is contingent on City appropriations, or other expenditure authority sufficient to allow City in the exercise of its reasonable administrative discretion, to continue to make payments under this contract. In the event City has insufficient appropriations, limitations or other expenditure authority, City may terminate this contract without penalty or liability to City, effective upon the delivery of written notice to Consultant, with no further liability to Consultant.

Certification. Consultant shall sign the certification attached hereto as Exhibit A and herein incorporated by reference.

Consultant:

City of Ashland

By _____
Signature

By _____
Department Head

Print Name

Print Name

Title

Date

W-9 One copy of a W-9 is to be submitted with the signed contract.

Purchase Order No. _____

ACCEPTANCE OF CONTRACT TERMS /

Perkins+Will accepts the contract provisions outlined in Exhibit C.



CERTIFICATE OF LIABILITY INSURANCE

7/1/2016

DATE (MM/DD/YYYY)

7/1/2015

THIS CERTIFICATE IS ISSUED AS A MATTER OF INFORMATION ONLY AND CONFERS NO RIGHTS UPON THE CERTIFICATE HOLDER. THIS CERTIFICATE DOES NOT AFFIRMATIVELY OR NEGATIVELY AMEND, EXTEND OR ALTER THE COVERAGE AFFORDED BY THE POLICIES BELOW. THIS CERTIFICATE OF INSURANCE DOES NOT CONSTITUTE A CONTRACT BETWEEN THE ISSUING INSURER(S), AUTHORIZED REPRESENTATIVE OR PRODUCER, AND THE CERTIFICATE HOLDER.

IMPORTANT: If the certificate holder is an ADDITIONAL INSURED, the policy(jies) must be endorsed. If SUBROGATION IS WAIVED, subject to the terms and conditions of the policy, certain policies may require an endorsement. A statement on this certificate does not confer rights to the certificate holder in lieu of such endorsement(s).

PRODUCER LOCKTON COMPANIES 444 W. 47TH STREET, SUITE 900 KANSAS CITY MO 64112-1906 (816) 960-9000	CONTACT NAME:	
	PHONE (A/C No. Ext):	FAX (A/C, No):
E-MAIL ADDRESS:		
INSURER(S) AFFORDING COVERAGE		NAIC #
INSURER A: LM Insurance Corporation		33600
INSURER B: Lloyds of London		
INSURER C: Liberty Mutual Fire Insurance Company		23035
INSURER D:		
INSURER E:		
INSURER F:		

COVERAGES PERWI01 CERTIFICATE NUMBER: 11480890 REVISION NUMBER: XXXXXXXX

THIS IS TO CERTIFY THAT THE POLICIES OF INSURANCE LISTED BELOW HAVE BEEN ISSUED TO THE INSURED NAMED ABOVE FOR THE POLICY PERIOD INDICATED. NOTWITHSTANDING ANY REQUIREMENT, TERM OR CONDITION OF ANY CONTRACT OR OTHER DOCUMENT WITH RESPECT TO WHICH THIS CERTIFICATE MAY BE ISSUED OR MAY PERTAIN, THE INSURANCE AFFORDED BY THE POLICIES DESCRIBED HEREIN IS SUBJECT TO ALL THE TERMS, EXCLUSIONS AND CONDITIONS OF SUCH POLICIES. LIMITS SHOWN MAY HAVE BEEN REDUCED BY PAID CLAIMS.

INSR LTR	TYPE OF INSURANCE	ADDL INSD	SUBR WVD	POLICY NUMBER	POLICY EFF (MM/DD/YYYY)	POLICY EXP (MM/DD/YYYY)	LIMITS
C	<input checked="" type="checkbox"/> COMMERCIAL GENERAL LIABILITY <input type="checkbox"/> CLAIMS-MADE <input checked="" type="checkbox"/> OCCUR	N	N	TB2661066787025	7/1/2015	7/1/2016	EACH OCCURRENCE \$ 1,000,000 DAMAGE TO RENTED PREMISES (Ea occurrence) \$ 1,000,000 MED EXP (Any one person) \$ 10,000 PERSONAL & ADV INJURY \$ 1,000,000 GENERAL AGGREGATE \$ 2,000,000 PRODUCTS - COM/PROP AGG \$ 2,000,000 \$
	GEN'L AGGREGATE LIMIT APPLIES PER: <input type="checkbox"/> POLICY <input type="checkbox"/> PRO-JECT <input type="checkbox"/> LOC OTHER:						
C	<input checked="" type="checkbox"/> AUTOMOBILE LIABILITY <input checked="" type="checkbox"/> ANY AUTO ALL OWNED AUTOS <input checked="" type="checkbox"/> HIRED AUTOS <input type="checkbox"/> SCHEDULED AUTOS NON-OWNED AUTOS	N	N	AS2661066787015	7/1/2015	7/1/2016	COMBINED SINGLE LIMIT (Ea accident) \$ 1,000,000 BODILY INJURY (Per person) \$ XXXXXXXX BODILY INJURY (Per accident) \$ XXXXXXXX PROPERTY DAMAGE (Per accident) \$ XXXXXXXX \$ XXXXXXXX
	UMBRELLA LIAB EXCESS LIAB DED RETENTION \$			NOT APPLICABLE			EACH OCCURRENCE \$ XXXXXXXX AGGREGATE \$ XXXXXXXX \$ XXXXXXXX
A	WORKERS COMPENSATION AND EMPLOYERS' LIABILITY ANY PROPRIETOR/PARTNER/EXECUTIVE OFFICER/MEMBER EXCLUDED? (Mandatory in NH) If yes, describe under DESCRIPTION OF OPERATIONS below	Y/N N	N/A	WC5661066787035	7/1/2015	7/1/2016	<input checked="" type="checkbox"/> PER STATUTE <input type="checkbox"/> OTH-ER E.L. EACH ACCIDENT \$ 1,000,000 E.L. DISEASE - EA EMPLOYEE \$ 1,000,000 E.L. DISEASE - POLICY LIMIT \$ 1,000,000
B	PROFESSIONAL LIABILITY	N	N	LDUSA1501441	7/1/2015	7/1/2016	\$1,000,000 PER CLAIM/\$1,000,000 AGGREGATE

DESCRIPTION OF OPERATIONS / LOCATIONS / VEHICLES (ACORD 101, Additional Remarks Schedule, may be attached if more space is required) FOR INFORMATIONAL PURPOSES ONLY.

CERTIFICATE HOLDER 11480890 SAMPLE	CANCELLATION SHOULD ANY OF THE ABOVE DESCRIBED POLICIES BE CANCELLED BEFORE THE EXPIRATION DATE THEREOF, NOTICE WILL BE DELIVERED IN ACCORDANCE WITH THE POLICY PROVISIONS. AUTHORIZED REPRESENTATIVE <i>Joseph M. Aquilino</i>
---	---

© 1988-2014 ACORD CORPORATION. All rights reserved.

EXHIBIT B

Certificate of Compliance

Compliance with Oregon Tax Laws:

In compliance with OAR 137-047-0260(2)(e), I hereby attest or affirm under penalty of perjury: That I am authorized to act on behalf of the proposer in this matter, that I have authority and knowledge regarding the payment of taxes, and that contractor is, to the best of my knowledge, not in violation of any Oregon Tax Laws, as defined in ORS 305.380.

Compliance with Nondiscrimination Laws:

In compliance with ORS 279A.110(4), OAR 137-046-0210(2) and OAR 137-047-0260(2)(a)(E), I hereby attest or affirm under penalty of perjury that I am authorized to act on behalf of proposer in this matter, and to the best of my knowledge the proposer has not discriminated and will not discriminate, in violation of ORS 279A.110(1), against a minority, women or emerging small business enterprise certified under ORS 200.055 or against a business enterprise that is owned or controlled by or that employs a disabled veteran as defined in ORS 408.225 in obtaining a required subcontract.

Corporate Officer:

By: 
Signature

Brodie Bain
Print Name

Title: Associate Principal

Date: Dec. 13, 2015

PROCUREMENT ELIGIBILITY /

This Perkins+Will team has never been debarred, suspended or disqualified from participating in public procurement activity. Perkins+Will and its team members meet the required eligibility criteria for involvement in public procurement activities.

**Request for Proposal
CLIMATE AND ENERGY ACTION PLAN**

ADDENDUM #1

The purpose of this addendum is to provide additional information and/or answers to questions that have been received in response to this RFP.

Question: *We are wondering if the City has an anticipated budget range for this project.*

Answer: The City does not have a maximum budget for this project. Cost is always a consideration and will be evaluated and scored in accordance with the terms outlined in the RFP.

Please review, sign, and return this addendum with the RFP documents.

I acknowledge receipt of ADDENDUM #1.

Signed by: *[Handwritten Signature]*

Date: *Dec. 13, 2015*

Printed name: *Brodie Baum*

Title: *Associate Principal*

Firm: *Perkins + Will*

**Request for Proposal
CLIMATE AND ENERGY ACTION PLAN**

ADDENDUM #2

The purpose of this addendum is to provide additional information and/or answers to questions that have been received in response to this RFP.

Question: *Is there a page limit for the proposal?*

Answer: There is not a page limit for the proposal. However, the information being provided in a proposal should be focused on satisfying the requirements in the section of the RFP titled Proposal Contents.

Please review, sign, and return this addendum with the RFP documents.

I acknowledge receipt of ADDENDUM #2.

Signed by: *[Signature]*

Date: *Dec. 13, 2015*

Printed name: *Brodie Ban*

Title: *Associate Principal*

Firm: *Perkins + Will*

**Request for Proposal
CLIMATE AND ENERGY ACTION PLAN**

ADDENDUM #3

The purpose of this addendum is to provide additional information and/or answers to questions that have been received in response to this RFP.

Question: *Does award of this RFP preclude the awardee/rejectees from doing implementation work with the City?*

Answer: If the City makes the determination to outsource the implementation process and release a Request for Proposal for the implementation of the Climate and Energy Action Plan, no one will be precluded from participating in a formal competitive sealed proposal process.

Question: *Is there money in the budget set aside for implementation of the accepted plan?*

Answer: Funding has not been appropriated at this time for the implementation of a Climate and Energy Action Plan. The current plan is to have the Climate and Energy Action Plan completed and approved as of January, 2017, which will allow time to integrate implementation funding requests into the biennium budget for 2017- 2019, which if approved will become effective on July 1, 2017.

Please review, sign, and return this addendum with the RFP documents.

I acknowledge receipt of ADDENDUM #3.

Signed by: *Brodie Bean*

Date: *Dec. 13, 2015*

Printed name: *Brodie Bean*

Title: *Associate Principal*

Firm: *Perkins+Will*

**Request for Proposal
CLIMATE AND ENERGY ACTION PLAN**

ADDENDUM #4

The purpose of this addendum is to provide additional information and/or answers to questions that have been received in response to this RFP.

Question: *I noticed that both this proposal and the one for the updated Water Master Plan include climate change projections. I would like to know how the city plans to ensure compatibility of the climate change projections for the 2 different planning processes, and how the two planning processes will be integrated.*

Answer: There is no expectation or requirement that the climate change projections from the Climate and Energy Action Plan project match, track or coincide with the climate change projections element called out in the Water Master Plan RFP. Each project should be treated independently for purposes of RFP responses.

Question: *Please provide names of local firms that might be interested in partnering if possible.*

Answer: This information is not available from the City. It would be a proposer's decision and responsibility to research and locate any potential partnering possibilities.

Question: *Which consultants has the City used to date in preparing this RFP and related technical reports?*

Answer: The City prepared the RFP and there are no related technical reports to release at this time.

Question: *Are these consultants precluded from pursuit of this project?*

Answer: Please refer to the question and answer provided in Addendum #3.

Question: *The package mentions climate action plans of other communities in Oregon and elsewhere that the Conservation Commission and Climate Action Plan Committee have researched. Can you share a list of the communities?*

Answer: The Conservation Commission (appointed citizens, not staff) reviewed many different plans over the past 12-18 months. A summary of their review can be found on the City website
[:http://www.ashland.or.us/SIB/files/031615_Climate_Energy_Plan_CC.pdf](http://www.ashland.or.us/SIB/files/031615_Climate_Energy_Plan_CC.pdf)
(Pages 8-9)

Request for Proposal
CLIMATE AND ENERGY ACTION PLAN

ADDENDUM #5

The purpose of this addendum is to provide additional information and/or answers to questions that have been received in response to this RFP.

Question: For efficiency, expediency and ease of use, there is little doubt the CEAP should utilize the same *ICLEI Global Protocol for Community-Scale Greenhouse Gas Emission Inventories* data and protocols currently being used in preparing the GHG Inventory; Section 12 of the protocol provides “Managing Inventory Quality and Verification” guidance assuming this. Would the city consider changing the scoring criteria (or adding a pass-fail stipulation) to assure that the firm awarded this contract will be able utilize, and calibrate to, the GHG inventory data & protocols used in the city-funded GHG Inventory?

Answer: The scoring criteria will not be changed; however, **the following addition in “red text” below has been made to the II. Submittal Qualifications found on page 12 of the RFP.**

II. Submittal Qualifications

- A. Experience in Municipal Climate Action Planning in Cities of comparable size, scale and complexity
- B. Professional certifications relevant to proposed project
- C. Demonstrated understanding of the state of Oregon’s regulatory construct relating to climate action and energy topic areas
- D. Engagement and facilitation skills and experience in a multitude of community wide public input/feedback formats
- E. Experience with GHG Inventory analysis, evaluation and implementation planning, **specifically the ICLEI Global Protocol for Community-Scale Greenhouse Gas Emission Inventories data and protocols currently being used in preparing the City’s GHG Inventory**
- F. Experience in both mitigation and adaptation policies, strategies and action planning
- G. Experience with communities that own/operate their own municipal electric utility and/or experience with communities that reside within a local electric co-op or similar structure with local control of electric utility decision making

Question: This month the City’s Public Works Department utilized the ORPIN system to publish the RFP for Ashland’s Water Master Plan Update (with a GHG element). The solicitation process allowed access between everyone who signed up on the RFP interest list, which had a positive impact for the city in that respondents were able to pool talents and team to provide skill sets and productivity better than a single firm. Will the city consider changing this RFP’s disclosure rules to allow publishing the names of all interested contractors and

Question: *Can you share preliminary results of the ongoing GHG inventory being conducted by the Commission?*

Answer: There are no preliminary results to release at this time.

Please review, sign, and return this addendum with the RFP documents.

I acknowledge receipt of ADDENDUM #4.

Signed by: *Broderick*

Date: *Dec. 13, 2015*

Printed name: *Broderick*

Title: *Associate Principal*

Firm: *Perkins+Will*

subcontractors, in hopes of enabling the most diverse and robust field of responses?

Answer: Please refer to question #2 on addendum #4. This RFP was advertised and posted on the City's website in accordance with AMC 2.50.110. The City's online bidding system does not release the names of the individuals who have logged in to view/download the RFP and subsequent addenda. This is something that may be considered in the future, but will not be changed at this point in the solicitation process. Today is the last day to submit questions and proposals are due prior to 2:00 PM (PST), Tuesday, December 15, 2015.

Ashland Municipal Code, Section 2.50.110

Electronic Advertisement of Public Contracts

The City may publish the advertisement for Offers by posting it on the website of the city, or if applicable, another governmental entity as long as the content required by the Model Rules and Oregon Public Contracting Code is available. Individuals that obtain the solicitation materials electronically are responsible for regularly checking for instructions, addenda, and related materials.

Question: What emissions accounting framework and model are being used to develop the GHG emissions inventory currently underway?

Answer:

Operations Inventory:

- Protocols / Guidance
 - CARB/CAR/ICLEI/TCR's *Local Government Operations Protocol*
 - *WRI's Scope 2 Guidance*
- Models
 - Oregon Department of Environmental Quality's *Oregon Purchaser Price Model*
 - EPA's *Waste Reduction Model*
- Tools
 - Good Company's *Carbon Calculator G3C*

Community Inventory:

- Protocols / Guidance
 - ICLEI's *U.S. Community Protocol*
 - *GHGP's Global Protocol for Community-Scale GHG Inventories*
- Models

- UC-Berkeley - Cool Climate Network's *Household Calculator*
- Tools
 - ICLEI's *ClearPath*

Electric Portfolio

- Protocols / Guidance
 - TCR's *Electric Power Sector Protocol*
- Models
 - none
- Tools
 - Microsoft Excel calculations

Question: The RFP calls for the "Inclusion and analysis of local historic, current and forecasted climate trend data". Will this data be provided by Ashland to the successful proponent?

Answer: Local historic, current and forecasted climate trend data is expected to be collected, analyzed and presented by the successful proposer.

Please review, sign, and return this addendum with the RFP documents.

I acknowledge receipt of ADDENDUM #5.

Signed by: 

Date: Dec. 13, 2015

Printed name: Brodie Bain

Title: Associate Principal

Firm: Perkins + Will

**Request for Proposal
CLIMATE AND ENERGY ACTION PLAN**

ADDENDUM #6

The purpose of this addendum is to provide additional information and/or answers to questions that have been received in response to this RFP.

Question: *What entity is undertaking the GHG inventory for the City?*

Answer: Good Company – Eugene OR

Question: *Is this inventory a geographic inventory, a consumption based inventory or both?*

Answer: The inventory is both geographic and consumption based

Question: *Is this inventory focused on measuring the City government's scope 1, 2, and 3 emissions? Or the community's emissions (including that from citizens and businesses within the city limits)? Or both?*

Answer: The inventory has three elements, a community inventory, a City operations inventory and an Electric Utility inventory and incorporates scopes 1, 2 and 3.

Please review, sign, and return this addendum with the RFP documents.

I acknowledge receipt of ADDENDUM #6.

Signed by: 

Date: Dec. 13, 2015

Printed name: Brodie Baum

Title: Associate Principal

Firm: Perkins + Will



1221 Second Avenue
Suite 200
Seattle, WA 98101

PERKINS WILL

perkinswill.com