



April 2012  
Neighbors Helping  
Neighbors...

# Ready Neighbor News

## April Showers Bring May Flowers: Flooding is Possible

### Inside this issue:

April Showers	1
CPR and First Aid	1
Save the Date	2
CERT Vehicle Update	3
New Sign-in Method	3
Training Opportunities	3
Training Calendar	4

### Next Meeting Dates:

#### General Meeting:

April 11th, Fire Station 1.  
Meeting starts at 6:30 with  
doors open at 6:00 PM.

#### Guest speaker:

Anne Kellogg. Topic: Critical  
Incident Stress Debriefing.

#### Leadership Meeting:

April 25th, Fire Station 1  
Meeting starts at 6:30 with  
doors open at 6:00 PM.



Ashland features several large streams and smaller tributaries that are susceptible to annual flooding events that pose threats to life and safety and cause significant property damage. Part of the Bear Creek Watershed, large streams include Ashland Creek and Bear Creek, smaller tributary streams include, Clay, Kitchen, Hamilton, Neil, Tolman, and Wrights Creeks. Ashland has nearly 200,000 acres of floodplain and 330 individual parcels that are partially or entirely within the floodplain. Snow melt from the Siskiyou Mountain range contributes substantially to flooding, and development within the City continues to displace natural areas that have historically functioned as flood storage.



Mt. Ashland receives about 65 inches of precipitation annually whereas within the City of Ashland annual precipitation is approximately 20 inches. The Mt. Ashland and surrounding mountain snowmelt provides continuous water source throughout the year, and can contribute significantly to the development of flooding.

Flooding can happen anywhere and at anytime; Are You Prepared?  
For More information on Flood Safety and Flooding in Ashland, please visit our website.

*This information was obtained from the Flood Safety brochure provided by The City of Ashland*

## HeartSaver First Aid, CPR, with AED

HeartSaver First Aid, CPR, AED, is a classroom, video-based, instructor-led course that teaches students critical skills needed to respond to and manage a first aid, choking or sudden cardiac-arrest emergency in the first few minutes until emergency medical services (EMS) arrives. Students learn skills such as how to treat bleeding, sprains, broken bones, shock and other first aid emergencies. This course also teaches adult CPR and AED use.

The cost for this course is \$45, which includes a student study book and card\*. The class takes approximately 8 hours to complete. All fees must be prepaid ten (10) days prior to the class date to confirm reservation.

\*Upon successful completion, students will receive an American Heart Association HeartSaver First Aid, CPR, AED Course Completion Card that is valid for two years.

**Note:** Classes are limited to eight participants. Registration is based on first-come, first-served depending upon when participants pay the class fee. Please register early to reserve your space.

When: Saturday May 12, 2012  
Time: 9am– 5pm



Where: Ashland Fire Station 1  
Cost: \$45

**For information or to register contact: Jessica Bowman,  
Volunteer Coordinator 541-552-2242 | cert@ashland.or.us**

## Save the Date: Base Inventory & Organization

It's that time of year once again! Base inventory should be completed annually; however, our records indicate that it has not been completed for several. CERT staff members would like to lend a hand in completing the base inventory. Let's make it a race, a friendly competition, or just plainly a work party, but let's complete the task before the May Base Bike Ride.

Staff members will be on location to aid area base members in completing inventory on the following dates/times:

**Briscoe:** Saturday, April 7, 2012  
9:45 – 10:45 am

**Grove:** Saturday, April 7, 2012

1:45 – 3:00 pm

**Lincoln:** Saturday, April 7, 2012

3:15 – 4:15 pm

**Oak Knoll:** Saturday, April 7, 2012

5:45 – 7:00 pm

**Terra:** Saturday, April 7, 2012

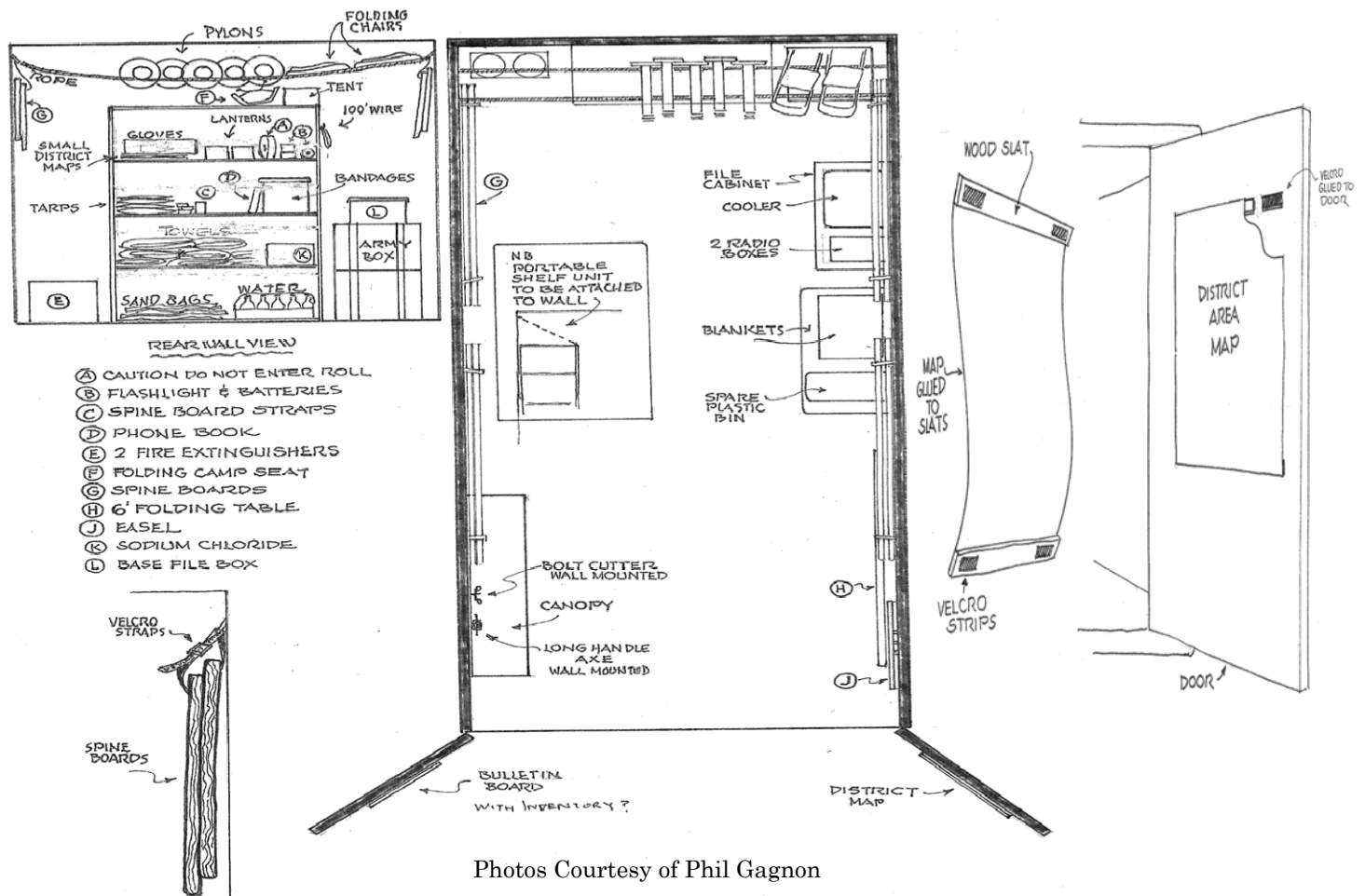
4:30 – 5:30 pm

Accurate inventory is necessary for planning. Emergency mobilizations have higher success rates when bases can be utilized to their fullest potential, but without knowing that potential we fall short in providing aid. Please come out and spend an hour lending a hand.

Want to get creative? Prizes will be awarded for the Best Organized

Base! Staff members have already taken photos of the inside of the bases and the photos reveal the need for a little TLC. CERT member, Phil Gagnon created these detailed diagrams of a well organized base box. Creating an effective organizational method that is synonymous throughout the bases will provide the consistency necessary for holistic utility by members and AFR when the bases are put to use.

CERT staff will judge bases Monday, April 30th; categories include a visibly updated inventory list, overall organization with possible labeling, and general cleanliness.



Photos Courtesy of Phil Gagnon

## CERT Vehicle Update

Driver Certification is in the horizon. Ashland CERT is happy to announce a driver certification process has been developed to train select members on the proper use of the CERT Vehicle. The certification process is open to interested Level #1 & #2 Ashland CERT members at this time. It is our hope to train 2-3 members from each geographic base area.

Driver certification can be achieved in five easy steps which include successful completion of both a driver course and written exam. The



purpose of providing a certification policy for the use of the vehicle is not to fail a member but to 1) provide that Ashland CERT has taken serious consideration for public safety and regulations and 2) provided the members with the knowledge and skills necessary to practice safe and responsible use of the vehicle.

If you are interested in being certified to drive the CERT Vehicle please contact our office. Training dates have yet to be determined, and space is limited.

## New Sign-In Method



Technology has come a long way over the years and we are pleased to announce Ashland CERT is benefiting from the tremendous innovations in computing systems. With the contribution from AFR of a

tough-book and the help of CERT member Dan Ragen we will deploy the new system.

This new system will require each member carries their CERT issued Identification Badge with them to all Ashland CERT events, trainings, mobilizations, and other functions. This new system allows you to simply scan your ID badge, confirm the information on the computer screen, and voila your sign-in is complete. After the event, you simply scan and confirm once again to sign out.

Our many thanks and gratitude goes out to AFR and Dan Ragen.

## Training Opportunities

Ashland CERT is committed to providing members with on-going training opportunities. We have lucky enough to receive invitations from several similar organizations to partake in many opportunities. These opportunities are not required of members, but if you have a special interest in the training, have the time to commit to attending, or just want heighten and perfect your skills you should attend. There are several Training Opportunities available including:

Wednesday, April 4, 2012 from 7:00 – 8:30 pm

FRS Radio Procedures sponsored by Bear Creek CERT. Location: Fire District 5 Fire Department. Please contact our office for more information.

Thursday, April 5, 2012 from 1:00 – 5:00 pm

ODOT Flagger Certification. Please contact Steve to find out if space is still available [steve.maclennan@ashland.or.us](mailto:steve.maclennan@ashland.or.us)

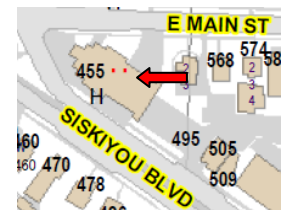
Wednesday, April 25, 2012 from 8:30 - 11:00 am

START (Simple Triage and Rapid Treatment) sponsored by the MRC.

To register: <http://www.surveymonkey.com/s/335FNLZ>

And don't forget our own Ashland CERT Spring Basic Training April 27-28 and May 4-5.

Fridays' evening training location; 455 Siskiyou Blvd:



Saturdays' training location; 90 N. Mountain Ave:



# CERT 2012-2013 Calendar of Events

January 2012	February 2012	March 2012
General Meeting January 11 <i>(Phone Tree Training)</i> Leadership Meeting January 25 <i>(Phone Tree 9-1-1 System Management)</i>	<b>SOU Basic Training Tue-Thu, Feb 1– 24</b> <b>Canceled</b> General Meeting February 8 <b>CERT Annual Phone Tree Test</b> Leadership Meeting February 22	General Meeting March 14 <i>(CERT Skills Training)</i> Leadership Meeting March 28 <i>(Planning for Basic Training)</i>
April 2012	May 2012	June 2012
General Meeting April 11 <i>(Guest Speaker)</i> Leadership Meeting April 25 <i>(Final Prep for Basic Training)</i> <b>CERT Spring Basic Training April 27-May 5</b>	<b>Basic Graduation - General Meeting May 9</b> Leadership Meeting May 23 (Basic Training AAR) 4th of July Event Planning	General Meeting June 13 <i>(CERT Evacuation Training)</i> Leadership Meeting June 27 <i>(Advanced Training Lesson )</i> & Final Planning for 4th of July)
July 2012	August 2012	September 2012
General Meeting July 11 <i>(CERT Fire Mission Training)</i> Leadership Meeting July 25 <i>(4th of July AAR – Fire Mission Planning)</i>	General Meeting August 8 <i>(Guest Speaker)</i> Leadership Meeting August 22 <i>(Fire Department Communications)</i>	General Meeting September 12 <i>(CERT Skills Training)</i> Leadership Meeting September 26 <i>(Advanced Training Lesson)</i>
October 2012	November 2012	December 2012
<b>SOU Basic Training Tuesday and Thursday October 1-25</b> General Meeting October 10 <i>(CERT ICS Demonstration)</i> Leadership Meeting October 24	General Meeting November 14 <i>(CERT Skills Training)</i> Leadership Meeting November 28	<b>CERT Year in Review /Awards December 12, 6:30 to 8:00 PM</b> No Meetings <b>Holiday Season Training Stand Down</b>

**Note:** General meetings are open to the public. Doors open at 6pm. Meetings are from 6:30pm-8pm at Fire Station 1.

Ashland CERT  
 455 Siskiyou Boulevard  
 Ashland, OR 97520

TO: