



Request for Proposal: McGee-Neill Memorial Sculpture
Nourishing Our Community

March 23, 2005

OVERVIEW

The City of Ashland's Public Arts Commission invites qualified artists and artist teams to submit proposals for the design of a memorial sculpture to be installed in an open area at the corner of an intersection of two streets (Lithia Way and Pioneer) in the historic center of the downtown area. This memorial project is intended to recognize the significant civic and business contributions of two families (McGee & Neill) to the City and community of Ashland.

BACKGROUND

This sculpture is a result of a bequest from the estate of Everett McGee and is intended to benefit the community as well as be a memorial to the McGee and Neill families. The site for this sculpture is located in an open concrete-covered area at the intersection of the primary northerly traffic flow in the city and in the core of the historic city center. The individuals referenced in this memorial include:

Everett Henry McGee, 07/27/1909 (Ashland, OR) – 12/30/2002 (Ashland, OR)

- ✍ Son of James McGee & Olive Wing, Husband of Donzella Neill (d. 10/25/95) and brother of Raymond & Vernon.
- ✍ Grocer – Lake of the Woods, East Side Grocery (Iowa & Morse), Market Basket (Siskiyou Boulevard & Beach Street) with Dick Neill (brother-in law, co-owner). Co-owned Fidegar Building/Pioneer Village Shopping Center (below the Ashland Armory) also with Dick Neill.
- ✍ Minister of Phoenix Church of Christ for 10 years

James Henderson McGee, 10/21/1877 (Clarinda, IA) – 08/15/1972 (Ashland, OR)

- ✍ Husband of Olive Wing (m. 1905), father of Everett
- ✍ Osteopath – 2 years, Graduated Kirksville, MD School of Osteopathy; Retail merchant – dry goods of Beebe, Kinney & Drake; McGee's Dry Goods and Ready to Wear (Elk's Building/Penny's Store)
- ✍ Built 140 E Main building
- ✍ Charter member of Chamber of Commerce, Lithians, Mason, Shriner, Elk's Club, Kiwanis Club, School Board, Ashland City Council
- ✍ Member of Church of Christ

RFP McGee memorial cont.

- ✍ One of first to build at Lake of the Woods
- ✍ Shakespeare Festival supporter

Richard (Dick) L. Neill, 07/18/1911 (Spokane, WA) – 06/20/1991 (Ashland, OR)

- ✍ Husband to Cora E. McDonald (m. 08/20/1960), Step-Father to Helen Climpner & Margaret Louise Khilnani, Brother to Donzella McGee
- ✍ Ashland Mayor (1953 – 1968), City Councilor (1949 – 1953?)
- ✍ Supporter of Presbyterian Church of Medford & Phoenix Fire Department Rescue Unit
- ✍ Instrumental in Ashland Community Hospital construction
- ✍ Grocer at Market Basket (Siskiyou Boulevard & Beach Street) with Everett McGee (brother-in law, co-owner). Co-owned Fidegar Building/Pioneer Village Shopping Center (below the Ashland Armory) with Everett McGee. Owned & operated Plaza Grocery from 1957 – 1961.
- ✍ Man-of-the-year for Chamber of Commerce in 1968, Director for the League of Oregon Cities, Director of the Independent Grocer’s Association of Oregon, Resolution from City of Ashland honoring him for contributions to City,
- ✍ Member of Elks, Masons, Shriners, Past Patron of Alpha Chapter of the Eastern Star #1, Presbyterian Church in Medford

DESCRIPTION

The McGee & Neill families have nourished and helped to sustain this community both literally – through their business - and figuratively through their lifelong service to the community. Therefore it is appropriate that we continue this tradition by nourishing the community with a beautiful piece of art that enhances a very visible area at the corner of two important streets in the downtown area. The artist(s) may freely employ any materials that will withstand the exposure to weather and allow for people to touch the work. This includes metals, stone, glass, ceramic, concrete or any other such material that would be both safe and durable in an outdoor setting. The design may not include electrical power, pumps, plumbing nor water due to concerns over maintenance and the potential for vandalism. The sculpture must be permanently affixed to the concrete ground surface. Specific site criteria are included at the bottom of this document (Appendices A & C).

BUDGET

This project is funded entirely from a bequest of the estate of Everett McGee and consists of \$19,000 for the design, fabrication, shipping and installation.

TIMELINE

The deadline for response to this RFP is 4 pm on Friday August 26, 2005. A 5-member jury will review all eligible proposals and provide a ranked selection to the Public Arts Commission (PAC) by September 23, 2005. Final approval and awarding of the commission is contingent upon approval by the City of Ashland City Council shortly thereafter when the PAC has presented this recommendation to them. The winning artist will be notified sometime in mid-October, 2005. The PAC is hopeful that the final piece will be installed by early spring of 2006, and recognizes that extenuating considerations such as foundry work could dictate when the piece is completed. The PAC will work directly with the winning artist to determine a reasonable timeline.

ELIGIBILITY

This Request for Proposals is open to all professional artists. Entrants may be individuals or artist teams.

SUBMISSIONS

All materials must be received in the City of Ashland Public Arts Commission office by 4:00 P.M., Friday, August 26, 2005. Send submissions to:

City of Ashland
Attn: Ann Seltzer -PAC McGee-Neill Memorial Project
20 East Main Street
Ashland, OR 97520

Submissions must include the following material:

1. Contact information including Name, Address, Telephone and e-mail and the number of years the artist(s) has been active.
2. A written narrative describing your proposal along with a description of how it corresponds with the theme for this project.
3. Graphic Rendition or photograph of your design concept, including at a minimum: Site Plan, Enlarged Plan, and other renderings or details as required to explain the design.
4. Photographs of up to ten prints, slides or digital images of previous work or related projects, accompanied by a sheet with descriptions of each work sample.
5. Biographical information, including previous experience, for all team members (limit one page per team member). This shall include the name(s) and contact information of all person(s) who will be responsible for the project with a description of each person's experience in performing the type of services being requested
6. Include a self-addressed stamped envelope if you wish return of your materials.
7. List of Materials and Installation Guidelines, including step-by-step process for installation.
8. Proposed Budget for Fabrication and Installation

INSURANCE

The selected artist/team and or installation team is required to carry professional liability insurance of no less than \$500,000 with a maximum deductible of \$5,000

SELECTION COMMITTEE

The winning entry will be selected by a Selection Committee consisting of five people, including a representative from the Ashland Historic Commission, an art professional (artist, art educator, gallery owner, etc.), an adjacent business or property owner, a member of the community at large and the final representative will either represent the McGee and Neill families or be a second member from the community at large. A member of the Public Arts Commission will facilitate the jury process but will not cast a vote.

The jury will select the winning entry based upon the following criteria:

1. Overall strength of design concept
2. Ability to engage and delight the community
3. Response to project theme: *Nourishing our Community*
4. Sustainability & durability of design under continuous community interaction
5. Artistic excellence and innovation
6. Entrant track record on similar projects

For artists submitting design and specify materials and installation the following criteria applies:

1. Appropriateness of the artwork to site in terms of scale, form, content and materials
2. Appropriateness of design solution for the climate and site
3. Appropriateness and availability of materials specified
4. Dependability of artwork relative to theft, vandalism and the environment
5. Ease of maintenance & safety

Appendix A: SITE CRITERIA

A. Site Considerations

All proposed artwork must respect the primary function of the street and sidewalk, which is to enable the safe and orderly movement of pedestrians and vehicles. Streets also function as utility corridors, and access must be maintained for present and future services above and below ground. Decisions about the placement of art in public rights of way rest with the City of Ashland Public Works Director. Final site approval is made by the City Councils or Parks and Recreation Commission depending on site location.

These guidelines outline the City of Ashland Engineering Services' general considerations for determining the acceptability of public art installations on City streets and sidewalks.

1. Traffic Considerations:

Public Art:

- a. Should not be unduly distracting to motorists
- b. Should not interfere with driver to driver, or driver to pedestrian sightings, and should therefore generally avoid corner clearance areas
- c. Should not unduly obstruct sight of the curb
- d. Should not obstruct pedestrian or traffic visibility, nor any traffic control device
- e. Should not interfere with the entrance or egress for transit buses
- f. Should not unduly disrupt curb use activities, i.e. loading zones, passenger zones
- g. Should not interfere with the opening of car doors

2. Pedestrian Considerations:

If public art is set in a walking surface:

- a. The leading vertical edge should not exceed 1/8" (to avoid trip hazard)
- b. Interior vertical edges should not exceed 1/4"
- c. Skid resistance properties should be equivalent to concrete sidewalks
- d. Depressions in the surface should not catch the spike heels of women's shoes
- e. Depression in the surface should not cause water to pool
- f. The ground level surfaces of the art must be capable of supporting the weight of a vehicle (500 Lbs/ft²) without damage or failure.
- g. The ability to maintain adjacent elements of the streetscape (including the sidewalk itself) must not be compromised nor reduced.

Public Art should:

- h. Maintain a minimum sidewalk width based on pedestrian volumes
- i. Minimize the potential for concealment and anti-social activities
- j. Maintain clearance from above, and below ground utilities

Public Art should avoid:

- k. Sharp edges, points, projections, or pinch-points which may cut, puncture or cause injury by impact, catch passing pedestrian clothing or entrap limbs.
- l. Obstructing the function of benches, bus shelters and crosswalk ramps.
- m. Utility access points or valves
- n. Obstructing pedestrian access to traffic signal push buttons
- o. Overhead parts which present a hazard to pedestrian traffic (i.e. as per minimum sign height)
- p. Unsafe climbing opportunities for children/adults

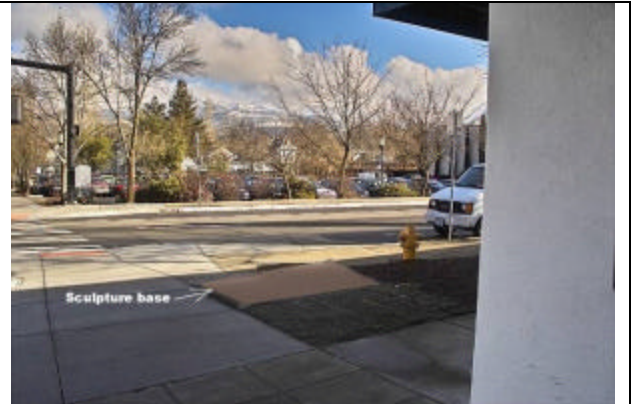
3. Electrical and Mechanical Considerations

- a. All electrical, mechanical and engineering components must be approved by Director of Public Works.
- b. All electrical elements and built up electrical devices must be certified by a professional engineer and upon completion, sealed. As-built drawing may be required from the Director of Public Works
- c. Any connections to city street lighting circuit must be approved by the Director of Public Works
- d. No connection will be permitted to city traffic signal circuits
- e. The junctions of components moving relative to one another must not create such hazards to people as pinch, crush or shear points.

Appendix B: SITE PHOTOS



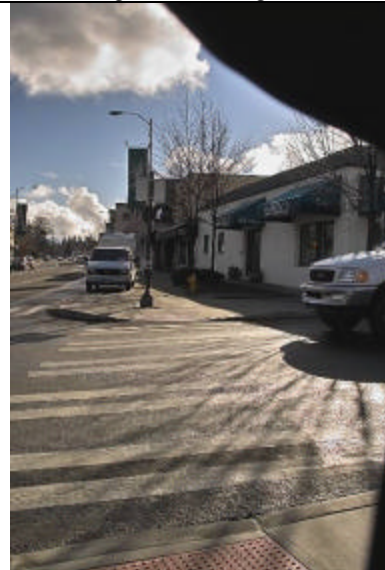
Looking east along Lithia Way



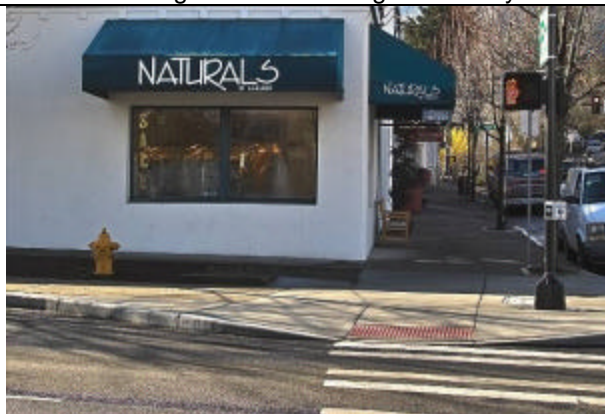
Looking north along Pioneer



Looking southwest along Lithia Way



Looking east along Lithia Way

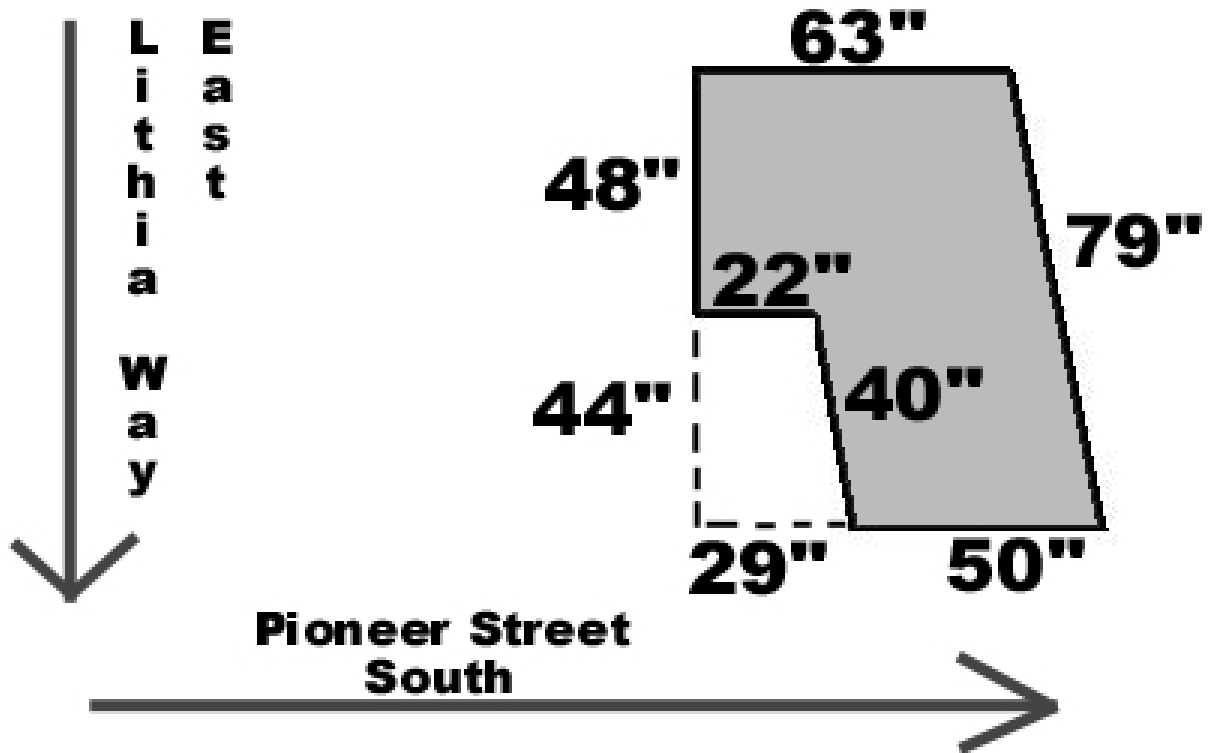


Looking south along Pioneer



Looking west along Lithia Way

Appendix C: BASE DIMENSIONS



Lithia Way is a one-way, 2-lane section of Highway 99. There is parking on both sides of Lithia Way.

Pioneer Street is a two-way, 2-lane municipal street with parking on both sides.

There is a sidewalk of varying widths surrounding the location for the sculpture and a fire plug approximately 10 feet due west of this location.

The surface is concrete and has pre-existing metal anchors permanently set into it.

The area within the dotted line is sloping from a lower grade up ~ 3 inches to the level surface shaded grey. Only the grey area may be used.