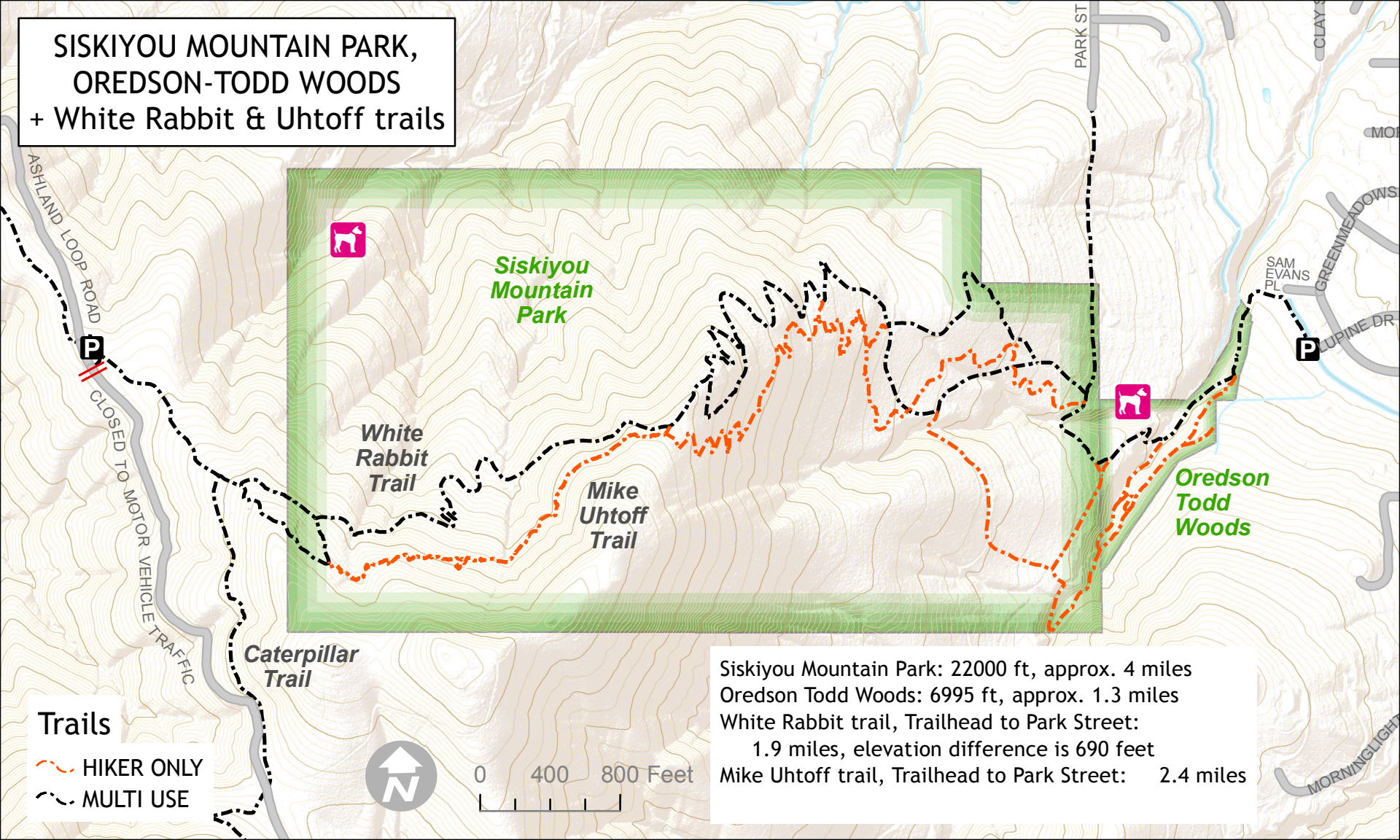


**SISKIYOU MOUNTAIN PARK,  
OREDSON-TODD WOODS  
+ White Rabbit & Uhtoff trails**



**Trails**  
- - - HIKER ONLY  
- - - MULTI USE

Siskiyou Mountain Park: 22000 ft, approx. 4 miles  
Oredson Todd Woods: 6995 ft, approx. 1.3 miles  
White Rabbit trail, Trailhead to Park Street:  
1.9 miles, elevation difference is 690 feet  
Mike Uhtoff trail, Trailhead to Park Street: 2.4 miles