

Council Business Meeting

August 2, 2022

Agenda Item	Fire Department Update/Fire Season Preparation	
From	Ralph Sartain	Fire Chief
Contact	ralph.sartain@ashland.or.us	541-552-2229

SUMMARY

Informational report of Ashland Fire & Rescue staffing, call volume, and wildfire preparation.

POLICIES, PLANS & GOALS SUPPORTED

Council Goal 1 - Develop current and long-term budgetary resilience

Council Goal 2 - Analyze City departments/programs to gain efficiencies, reduce costs and improve services

Cultivate External Funding Opportunities

Support Innovative Programs that Protect the Community

PREVIOUS COUNCIL ACTION

None

BACKGROUND AND ADDITIONAL INFORMATION

The attached report is an informational report on the status of the fire department, current staffing call volume, trends, wildfire preparation and related updates.

FISCAL IMPACTS

None

STAFF RECOMMENDATION

This is an informational report no council action is needed at this time

ACTIONS, OPTIONS & POTENTIAL MOTIONS

None

REFERENCES & ATTACHMENTS

Power point presentation

Ashland Fire & Rescue Updates

Fire Chief Ralph Sartain

What We Will Be Covering

- Call Volume
- Fire Department Staffing
- Fire Season and Preparations
- Fire Adapted Ashland
- Ashland Forest Resiliency Program

Call Volume & Staffing

1995

Number of Calls

- 1011

Number of Firefighters

- 21

2015

Number of Calls

• 3968

Number of
Firefighters

• 30

Overlapping Calls

1453

2021

Number of Calls

• 4785

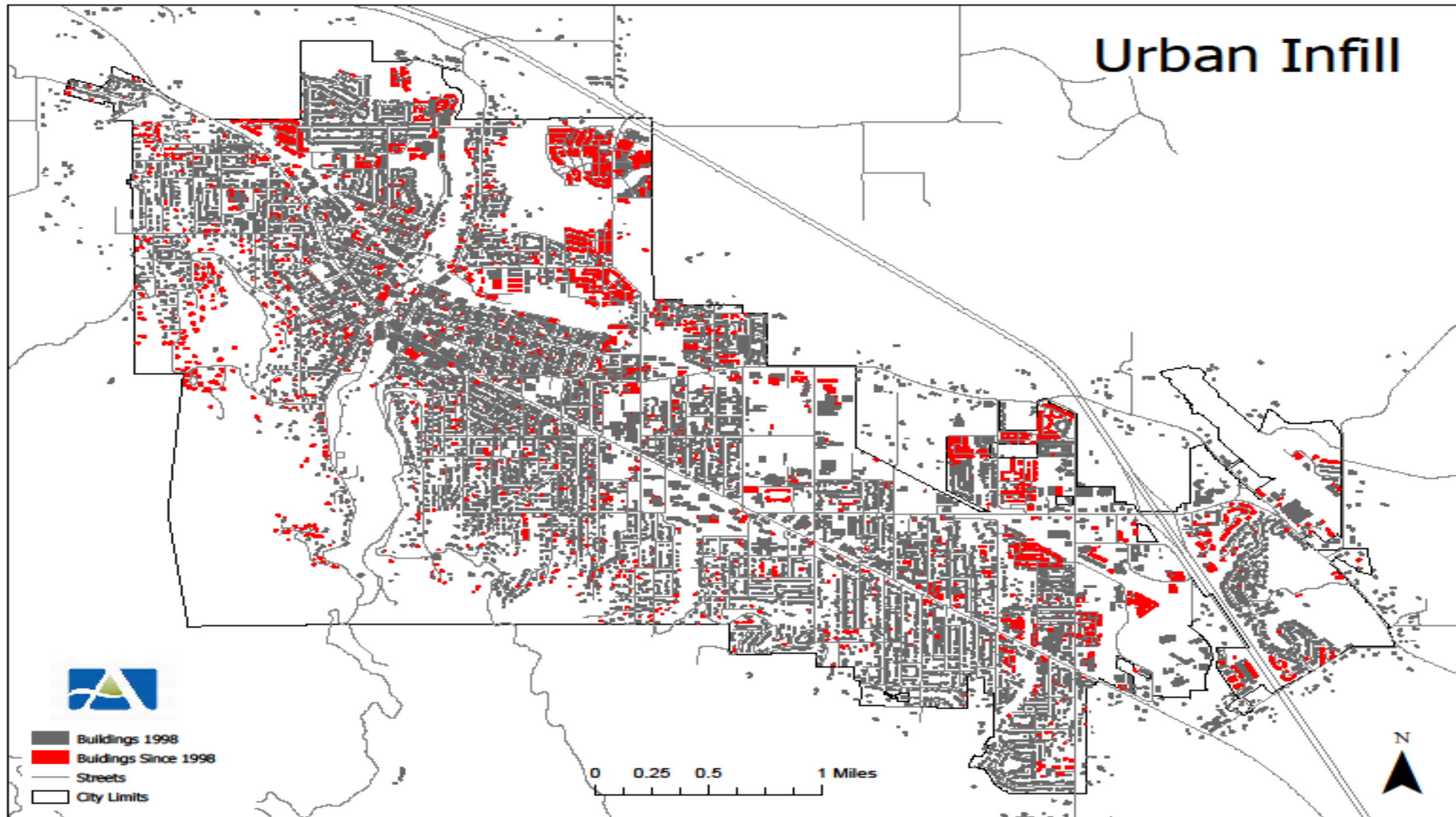
Number of
Firefighters

30

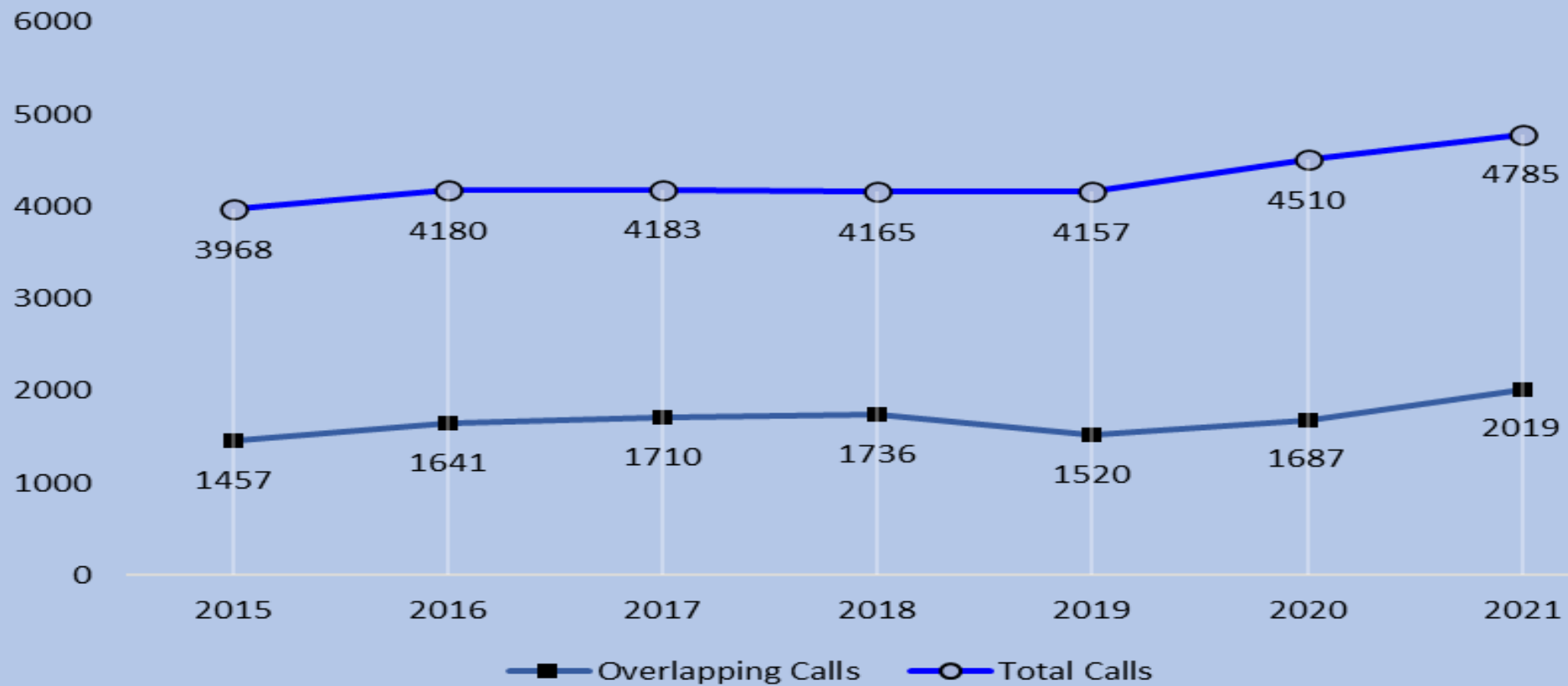
Overlapping Calls

• 2079 (43.45%)

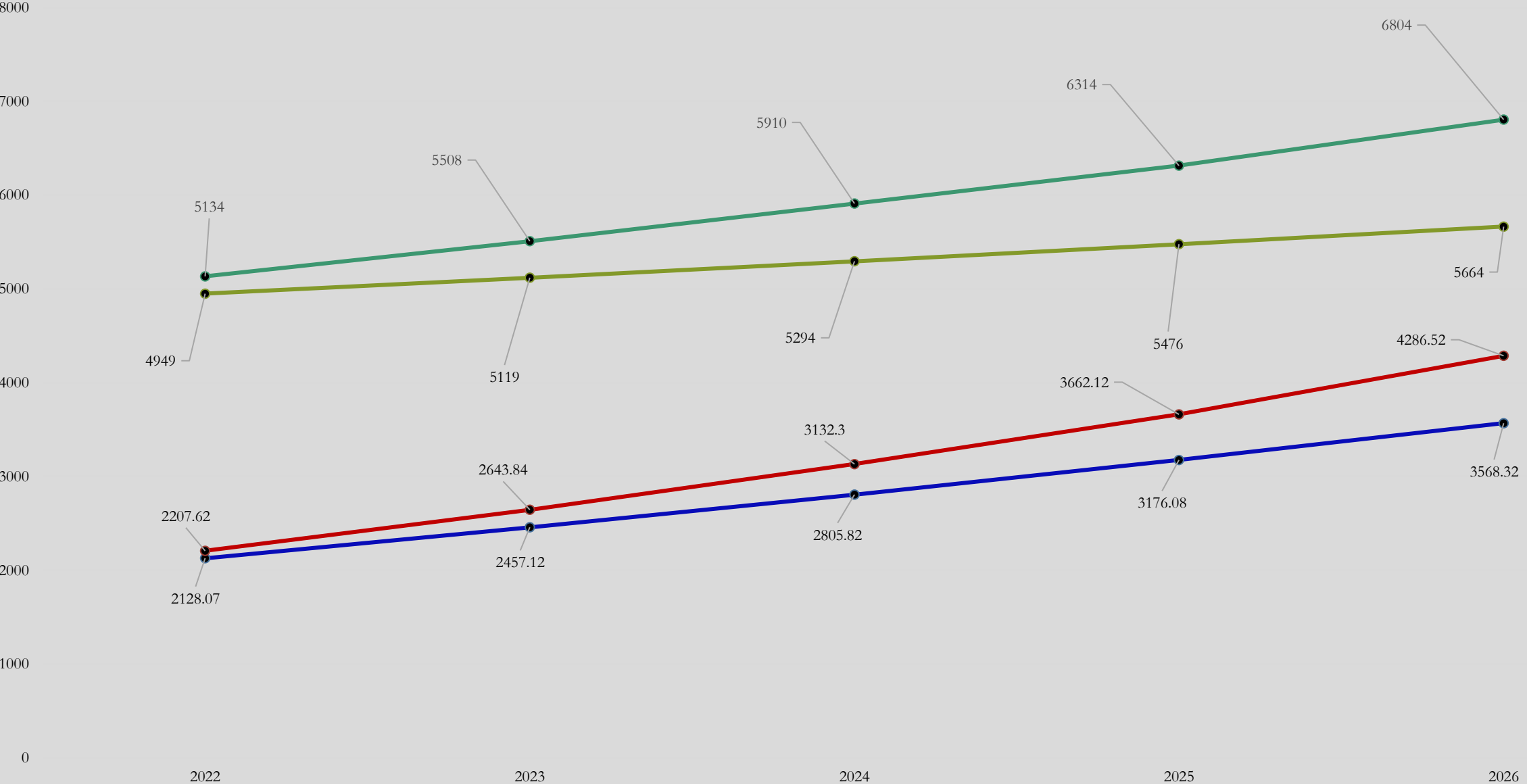
Urban Infill



Overlapping Calls For Serice Call Volume Trend

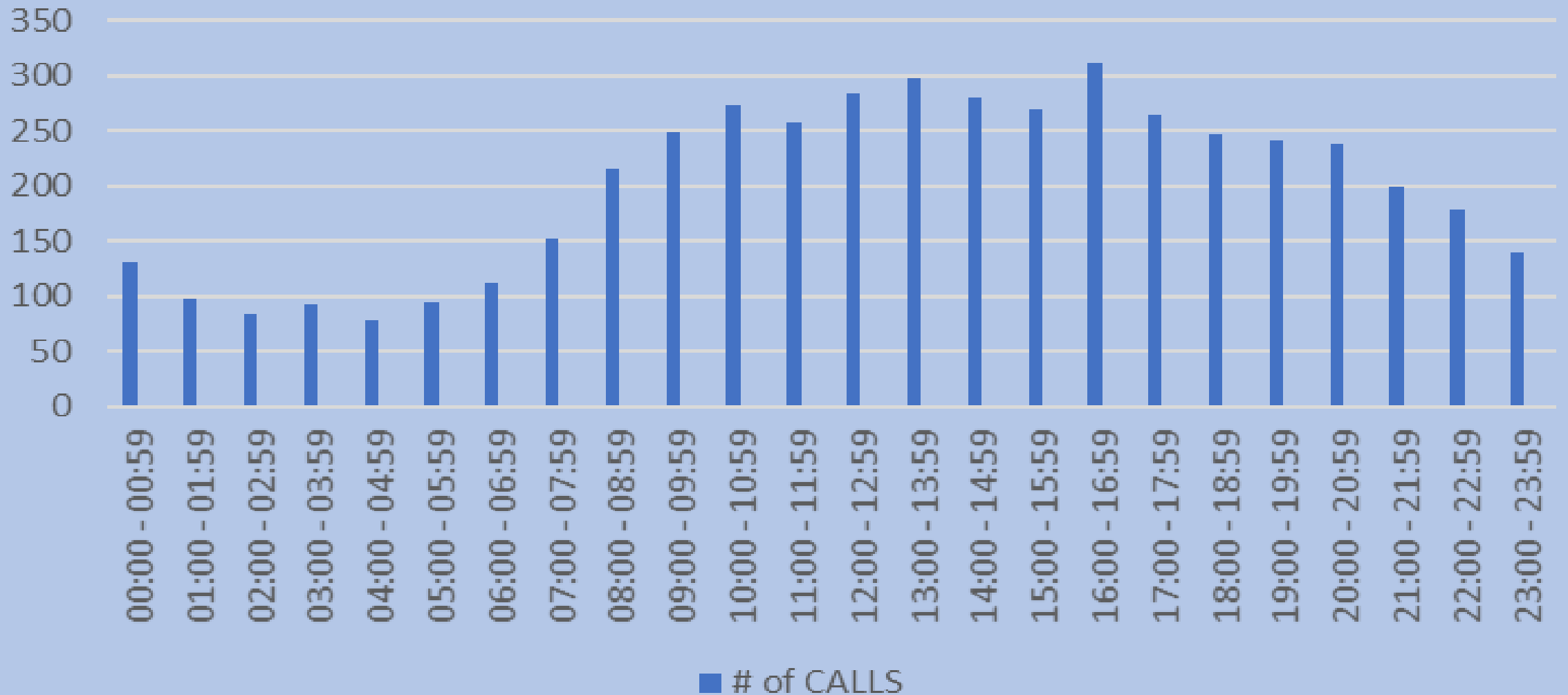


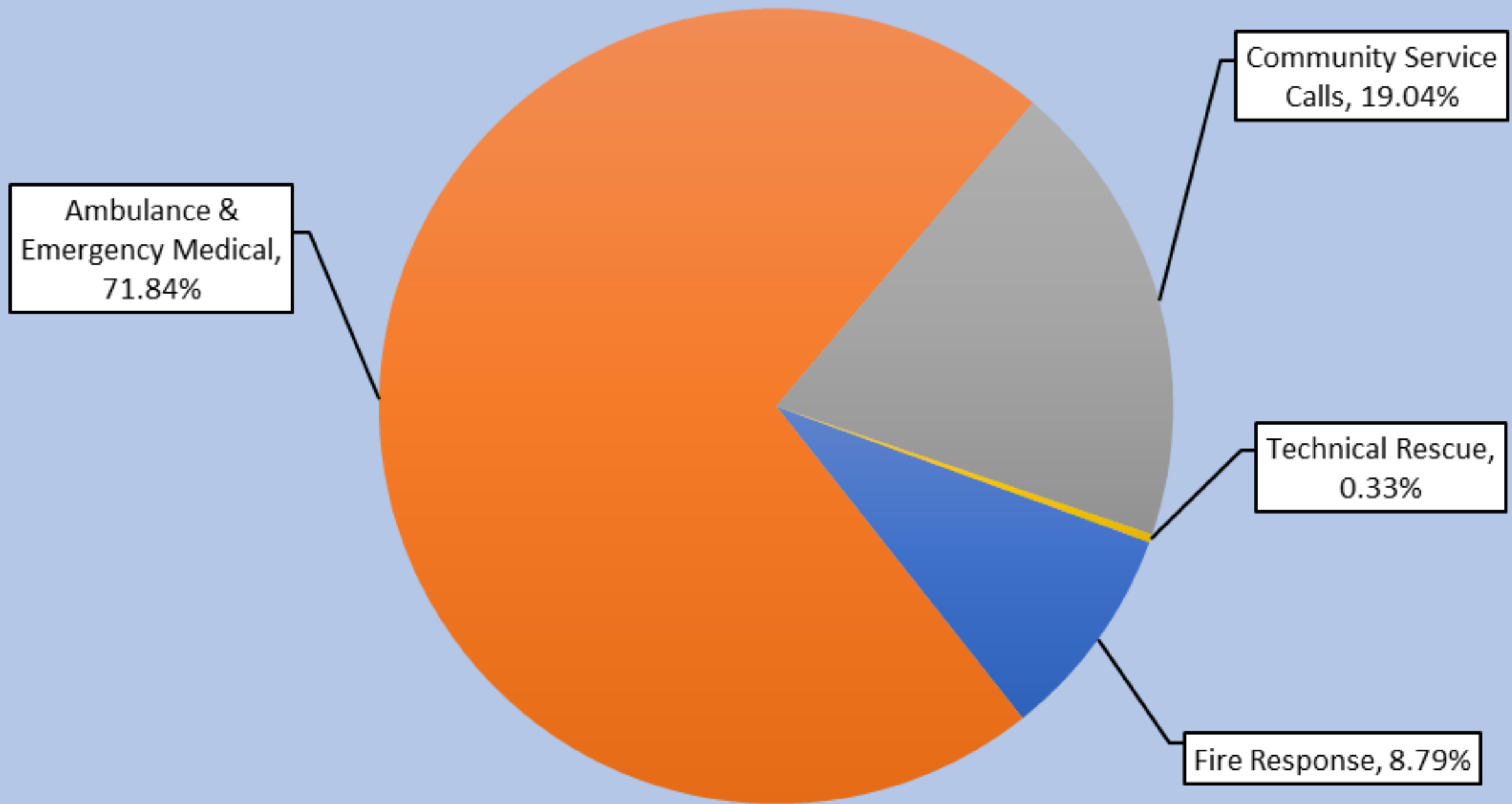
Call Volume and Overlapping Calls Forecast



● 3.43% increase
 ● 7.295% increase
 ● Overlapping 3.295%
 ● Overlapping 7.295%

Number of Responses for Each Hour





Shift Schedule

3 operational shifts – A, b and C

10 firefighters are assigned to each shift

Shifts work a “48/96” schedule

(two days on followed by 4 days off)

Staffing Levels

8/10 and 10/13 Where do we need
to be?

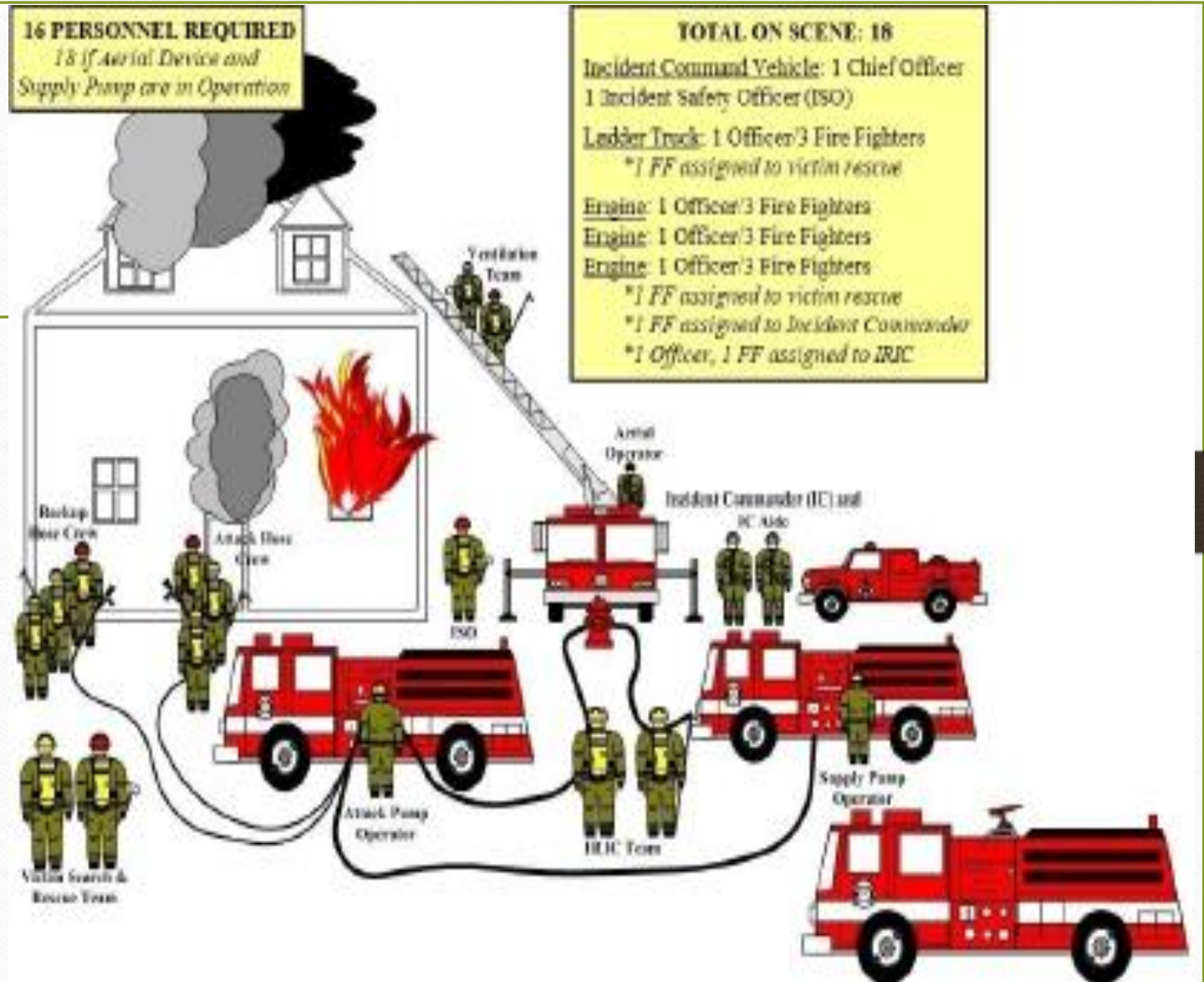
NFPA Overview

- NFPA 1710 Standards:
 - Arrival of first fire engine at a fire: 4 min. or less, 90% of the time
 - Arrival of second fire engine: 6 min., 90% of the time
 - Deployment of a full first-alarm assignment: 8 min., 90% of the time

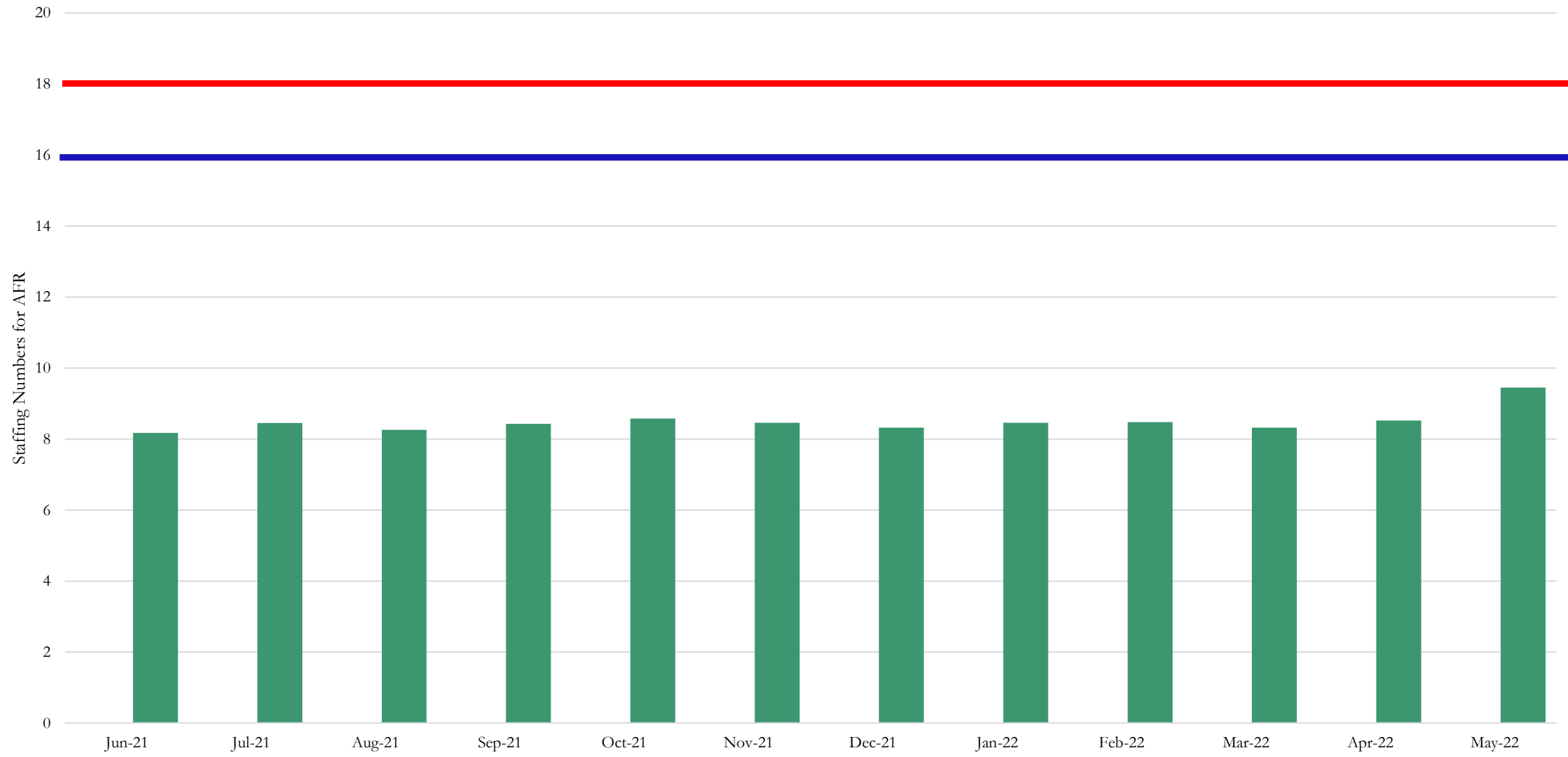


NFPA 1710 Overview

- This is for a 2000 Sq ft home with no exposure and no basement



AFR Staffing Past 12 Month



Current Minimum Staffing of 8

Station 1

Station 2



Minimum Staffing of 10

Station 1

Station 2



Fire Season Preparation

What has Occurred

- Regional Meetings
- Increased Training
- Grant Funding for up staffing (SB762)
- Pre-positioned Equipment
- Wildfire Risk Reduction Specialist and FEMA Grant
- The FLSS position has been hired.

Wildfire/Community Risk Reduction

Fire Adapted Ashland

Ashland Forest Resiliency Stewardship Project

Ashland's Comprehensive Approach to Wildfire Safety

www.fireadaptedashland.org

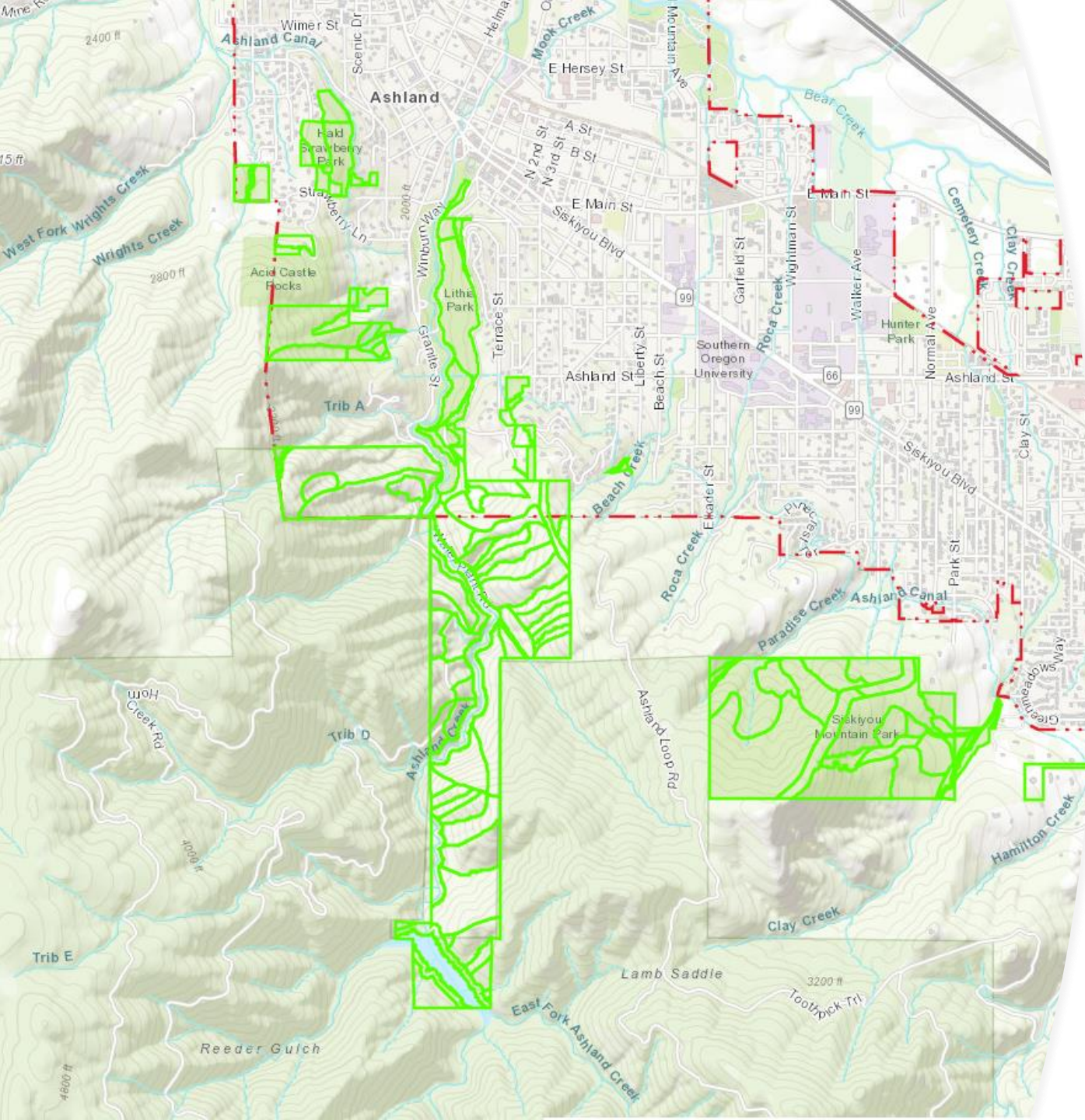
www.smokewiseashland.org

www.ashlandwatershed.org





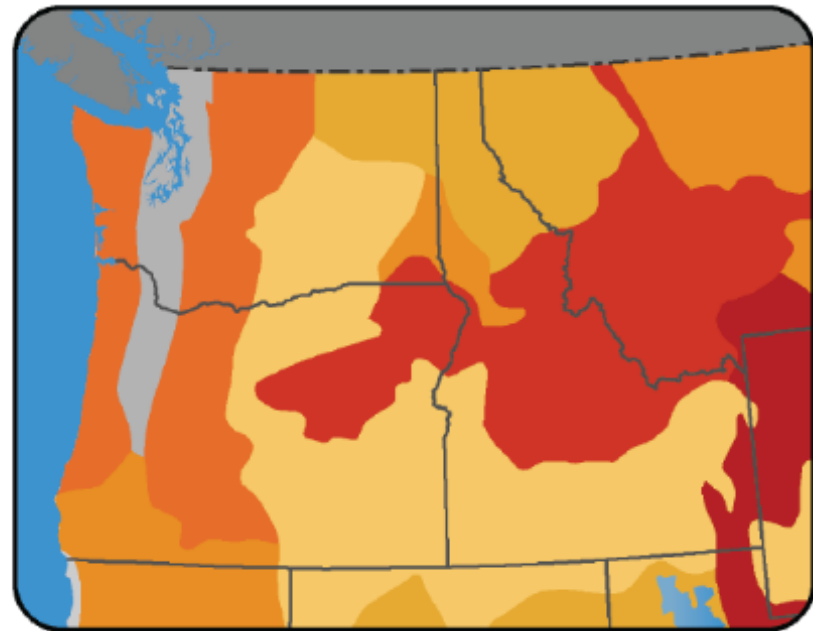
National Cohesive Wildland Fire Management Strategy: Ashland Style



City and Parks Forestlands Management: The Ashland Forest Plan

- **Nearly all 1,100 acres is inside or within one mile of City Limits**
- **Since early 1990's, community forests have been managed for values including water, wildlife, and wildfire under Forest Lands Commission.**
- **200 acres of wildfire safety work completed this last year.**

Adapting City and Parks Forests to Climate Change



Projected Increase in Area Burned

- 600% to 700%
- 500% to 600%
- 400% to 500%
- 300% to 400%
- 200% to 300%
- 100% to 200%
- Not modeled

- A cutting-edge plan is being put together via Forest Lands Commission to chart adaptation to a changing climate on City/Parks forestlands
- Complements the City's Climate and Energy Action Plan and 2016 Ashland Forest Plan.
- Public comment late summer/early fall and Council decision by end of the year

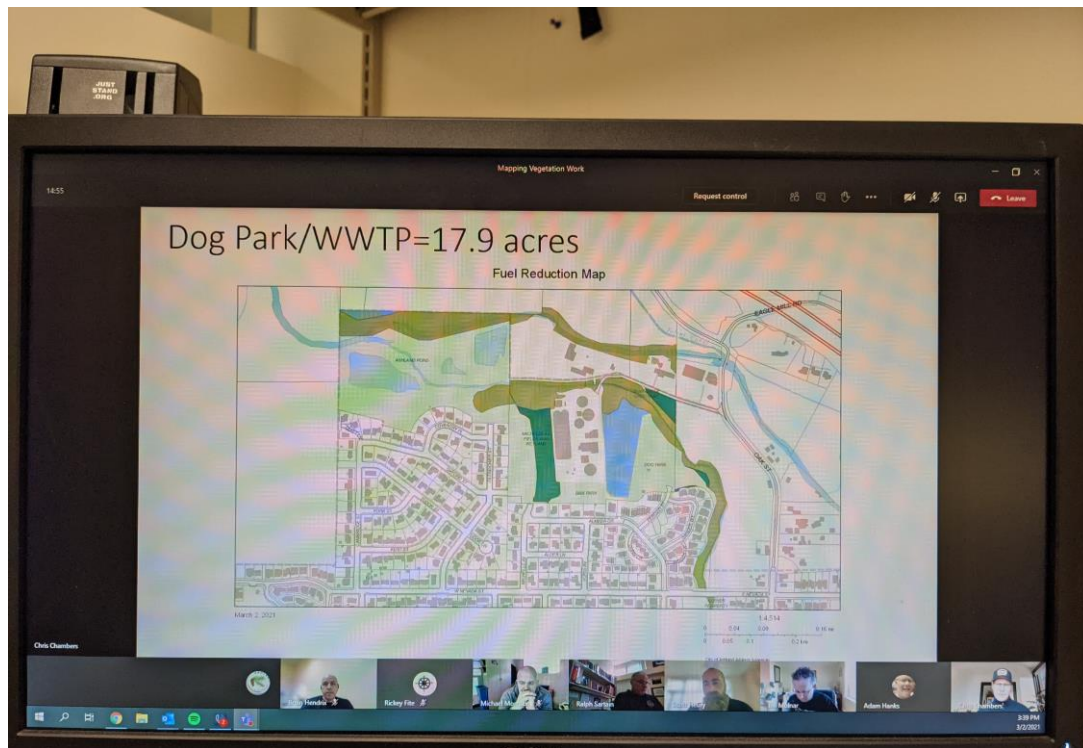
Dying Pines: One Signal of a Changing Climate

- **Bark beetles killed many dozens of large trees on City, Lithia Park, and surrounding private lands in 2021.**
- **Trees had to be cut and removed for public safety**
- **We can expect more of this as drought and heat stress trees**



Interdepartmental Vegetation Management Team

- Inventoried all City/Parks property for fire hazards in 2020
- Majority is blackberry bushes along creeks
- 151 acres of mowing/cutting fuel breaks already takes place *every year*
- Implementing work plan to remove as much blackberry starting close to homes and maintain fire safety over time. More was done along Ashland Creek in 2022.





GOOD FIRE



PREVENTS BAD FIRE

Scott Harding Photo - Siskiyou Fire, 2009, Ashland OR

Controlled burns protect forests and our watershed.



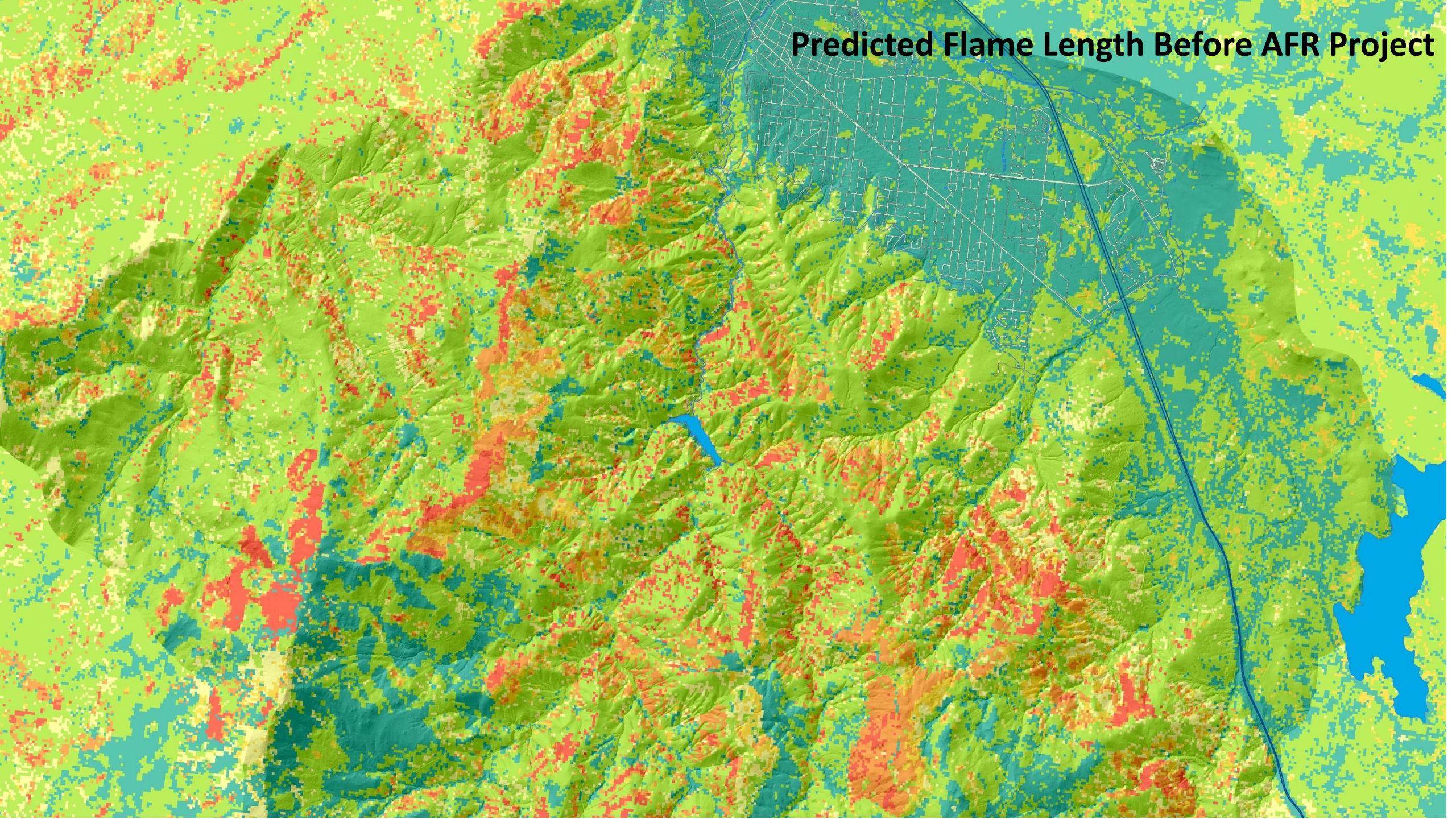
- Reduce fire danger to firefighters, residents, and the places we love
- Reduce the fuels that feed catastrophic fires
- Produce much less smoke than severe wildfires

When you see controlled burns during the cool time of year, know we are working for healthier forests and community: for today and for future generations.

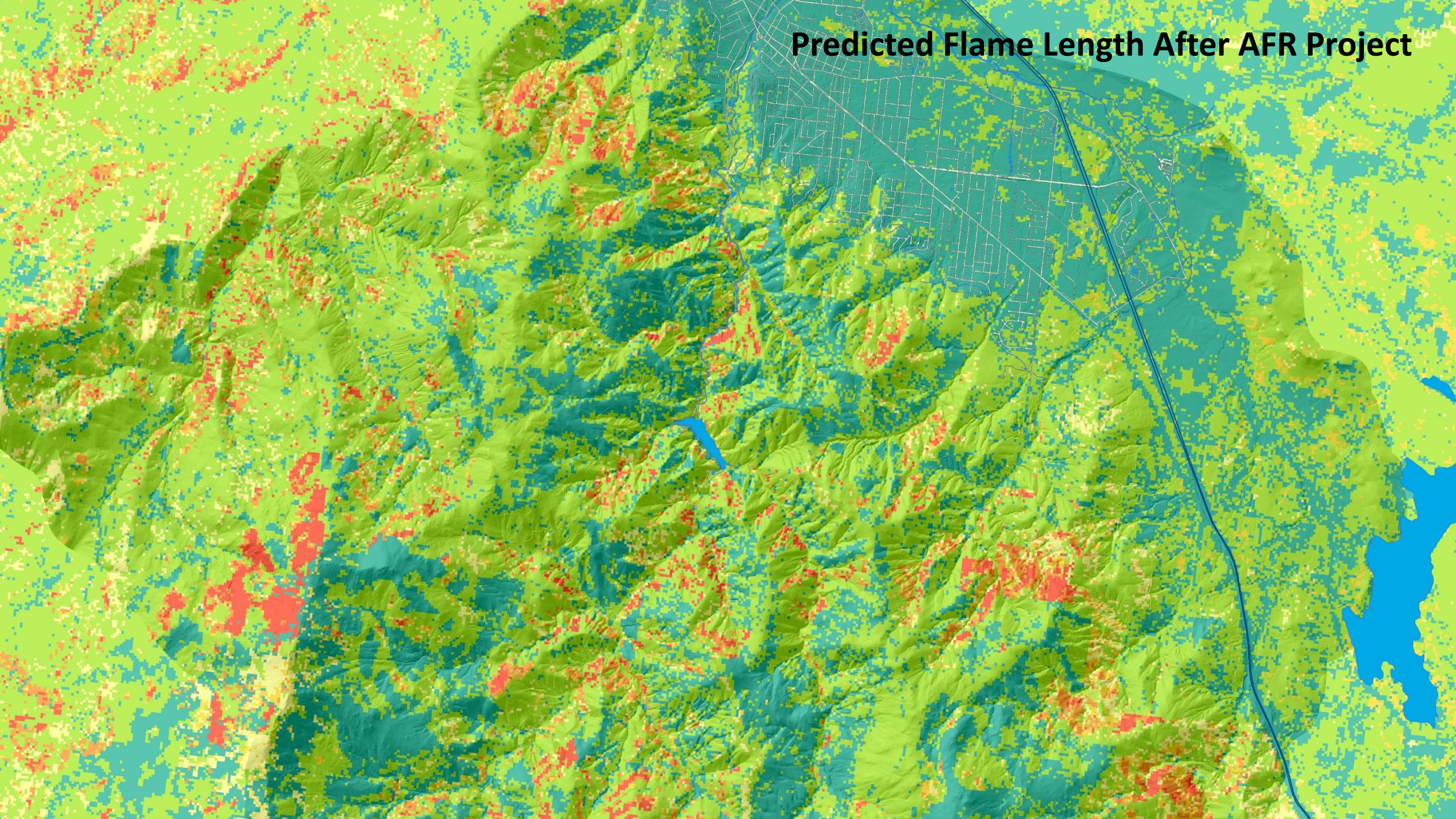
Ashland Forest Resiliency Stewardship Project

- 10+ years of work across U.S. Forest Service and private lands has stitched together 13,000 acres of forest restoration and wildfire risk reduction surrounding town and the watershed.
- Significant controlled burning remains to maintain our gains and protect our community and watershed. 198 acres were completed this year and we need to be burning 1,000+ acres a year.

Predicted Flame Length Before AFR Project

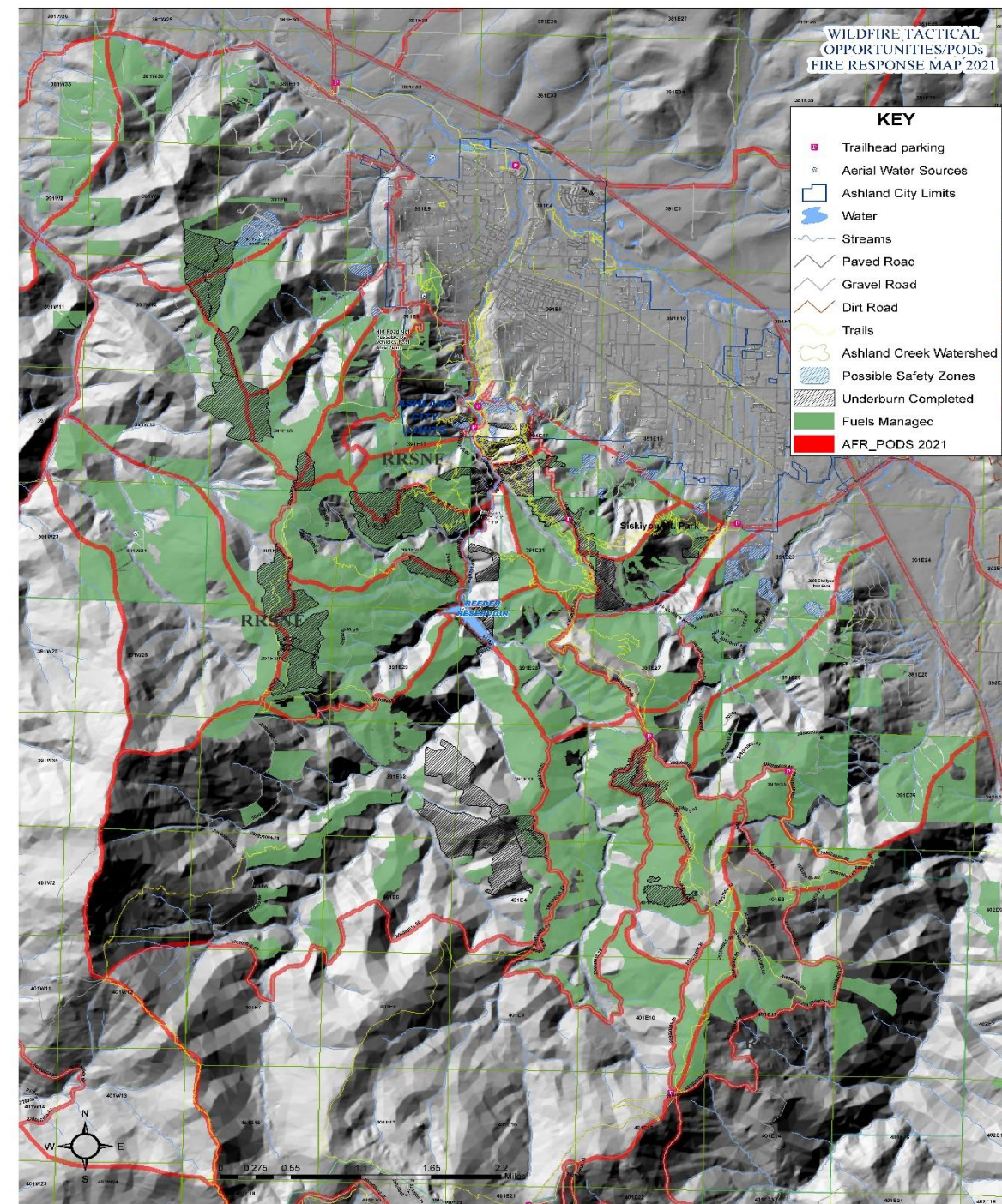


Predicted Flame Length After AFR Project



Leveraging Completed Fuels Reduction to Plan Suppression: PODs

- Pre-locating fire lines based on topography, roads, and where we've completed forest thinning and prescribed burning.
- Safer for Firefighters
- More effective air attack
- Prioritize future prescribed burning and fuels reduction



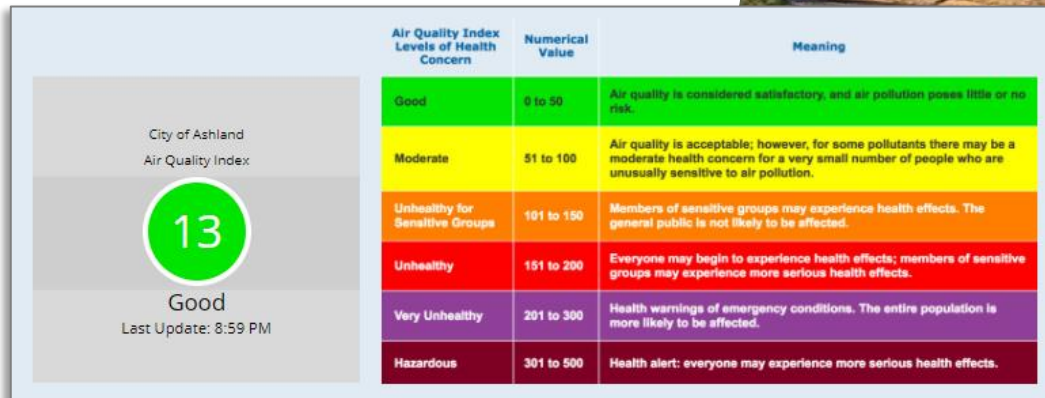
Smoke Preparedness

2018 Summer
Moderate AQI

2018 Summer
Unhealthy AQI

smokewiseashland.org

- One-stop-shop for smoke information:
 - Air Quality Index
 - Smoke and health
 - Creating indoor air quality
 - Business preparedness
 - Controlled burn information



PREPAREDNESS AND RESILIENCE TOOLKIT

THE LANGUAGE OF BUSINESS

PREPARING TOGETHER

SMOKE PREPAREDNESS

PAY YOUR DUES

GIFT CERTIFICATE PROGRAM

HELP SUPPORT FLOWER BASKETS IN
ASHLAND FOR 2022

GREETERS MEETINGS

2019-20

LIVING AND DOING BUSINESS GUIDE

MEMBERSHIP

ASHLAND CHAMBER'S
COMMUNITY EVENTS

BOARD & STAFF

ASHLAND CHAMBER
VOLUNTEER APPLICATION

PROGRAMS & COMMITTEES

PUBLICATIONS

RAPID RESPONSE TEAM

CHAMBER HISTORY

ASHLAND'S ECONOMY

Preparing Together Take One Step Today *We all have a part to play*

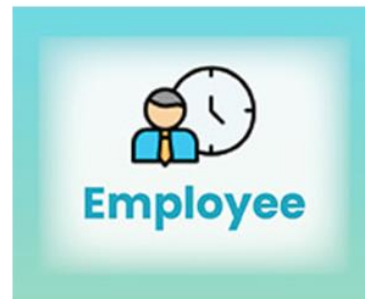
The Ashland Chamber of Commerce and Ashland Fire & Rescue have developed resources to help you prepare for emergencies with useful information on smoke, evacuation and alerts. Click on the links below.



[Smoke Information](#)

[Evacuation](#)

[Alert Signups](#)



[Be Prepared](#)

[Smoke Information](#)

[Evacuation](#)



[Be Prepared](#)

[Smoke Information](#)

[Business Workbook](#)



[Evacuation](#)

[Alert Signups](#)

[Prepare Your Home](#)

Tent Cards Distributed to Ashland Businesses

Front

Preparing Together
Take One Step Today
Ashland Cares About You



For information on emergency preparation
and smoke, go to
www.ashlandchamber.com/prepare

Sign up for Nixle:
Ashland's
Emergency
Alert System

Text: 97520 to 888777 for alerts
while you are in Ashland

Text: Stop to 888777 to unsubscribe

Back

*Working together for the
health of our community*



Fire Adapted Ashland: Our Community Wildfire Safety Program

- One-stop-shop for all things wildfire preparedness
- Fire mitigation programs (Firewise, WRAP, FEMA)
- Wildfire Safety Ordinance and code information
- Educational resources and videos
- Grants for property owners

www.fireadaptedashland.org

The screenshot shows the homepage of the Fire Adapted Ashland website. At the top, there is a navigation bar with the site logo, a search box, and menu items for 'ABOUT', 'PREPARE', 'RESOURCES', and 'MY HOME'S WILDFIRE RISK'. Below the navigation bar are two large featured images: one showing a house with the text 'Reduce Your Wildfire Risk' and another showing a house with the text 'My Home's Wildfire Risk'. A 'Quicklinks' section is located below these images, featuring eight tiles with various topics: 'My Home's Wildfire Risk', 'Firewise Plant List', 'Weed Abatement Information', 'Wildfire Preparedness Campaign', 'NIXLE Community Alerts', 'Fire Resistant Privacy Screening', 'Smokewise Ashland Information', and 'Ashland Forest Resiliency Project'.



Codes & Ordinances

- **Weed Abatement**
 - June 15th deadline - Dry Grass and Weeds 4 inches
- **Wildfire Safety Ordinance**
 - Affects New Development/Additions from 2018 on.
 - Wildfire Safety Requirements
 - Prohibited flammable plants list
 - Fence connections made of non-flammable material
 - No wood roofing

APRIL

Harden your home!

Protect against embers and flames

MAY

Be Firewise!

Keep your yard lean, clean, and green

JUNE

Be Ready!

Prepare to evacuate or shelter in place

JULY

Be Smokewise!

Prepare for smoke

Wildfire Safety Campaign

fireadaptedashland.org/wildfireprep

Harden Your Home!

This April, harden your home's exterior against embers.

We must all do this work to protect the community.

Wildfire Risk Assessment Program (WRAP)

- One-on-one wildfire risk home assessments
- Fire department + Wildfire Safety Commission creating volunteer training program
- 6 Volunteers active, 174 Assessments Completed Since October. Another training is planned for fall.



Interested in volunteering?

[Fireadaptedashland.org/wildfireprep](https://fireadaptedashland.org/wildfireprep)

Drop off your flammable
green debris at
**Green Debris
Drop-off Day!**
Sunday, May 2nd

[Learn more here](#)

Apply to get a
Green Debris Bin
in your neighborhood

[Apply here](#)

Listen to our
**Wildfire
Preparedness
Webinar**
Series

[Coming Soon](#)

Sign up to become a
**Wildfire Risk
Assessment**
Volunteer

[Learn more here](#)



Bark Mulch Flammability Test

- We know mulch is a significant contributor to home ignition and codes prohibit it next to new homes.
- Are there mulch products that do not support ignition and combustion?
- What mulch types might we not want anywhere in landscapes?
- Partnership with Fire District #3. Test will happen in mid-August. Thank you Hilton Fuel and Landscape Supply!

Real Estate Wildfire Education Program

- Course was held for real estate professionals to learn about home wildfire hazards and ways to mitigate hazards. Another class is planned for this fall.
- Created a course for home inspectors to understand the relationship between wildfire and the home structure and write this into inspection reports. Eight inspectors have been trained.

Guidelines for Wildfire Safety when buying a home



\$3 Million FEMA Mitigation Grant

- Defensible space around top 1,100 at-risk homes in Ashland
- Replace wood shake roofs with Class A or Class B shingles
- 72 homes completed
- 44 more in progress
- \$247,000 spent to date



FEMA

Wildfire Risk is Rising: What More Can We Do?

- We need to address existing risk in homes not being covered by the FEMA grant, which is about 5,000 homes who need assessments and cost-share funding. Many are lower risk, so should cost less.
- Need to address multi-family residences, commercial structures, and institutional facilities. These are key to wildfire recovery and home to economically vulnerable population.
 - State funding will become available soon. Looking for mitigation and staffing dollars.
- Need to update our Community Wildfire Protection Plan (CWPP).
 - Federal \$\$ from Infrastructure Bill are becoming available with priority on funding CWPP updates. We'll be well positioned to apply this year.
- Addressing the State-wide risk map issues, our rating may not change.

Questions?